



DEVONSHIRE GARDENS, CHISWICK, LONDON, W4  
**£1,400 PER MONTH FURNISHED**

## A BRIGHT AND SPACIOUS APARTMENT IN A BEAUTIFUL PERIOD PROPERTY WITH ACCESS TO COMMUNAL GARDENS

### SUMMARY:

An absolutely beautiful and incredibly spacious studio/one bedroom with mezzanine bedroom set on the raised ground floor of this striking Victorian building. The property is finished to a high standard and flooded with natural light throughout and has access to communal gardens. Available November. Furnished.

### AT A GLANCE

- Mezzanine Bedroom
- Reception Room
- Kitchen
- Shower Room
- Communal Gardens
- Council Tax Band C
- Epc Rating Band D
- Furnished

Chiswick | 020 8994 7096 | [chiswick@winkworth.co.uk](mailto:chiswick@winkworth.co.uk)



**DESCRIPTION:**

A beautifully presented property which comprises entrance hallway, modern shower room, spacious living area with large bay window, open plan kitchen and dining area. There is a large mezzanine with sleeping area and an extensive sized storage cupboard. To the back of the property you have access to a lovely maintained communal garden.

Chiswick Mainline station is just moments away.

Available in November on a furnished basis.





## **ACCOMMODATION**

**Studio**

**Reception Room**

**Kitchen**

**Shower Room**

**Communal Gardens**

**Council Tax band C**

**EPC Rating Band D**

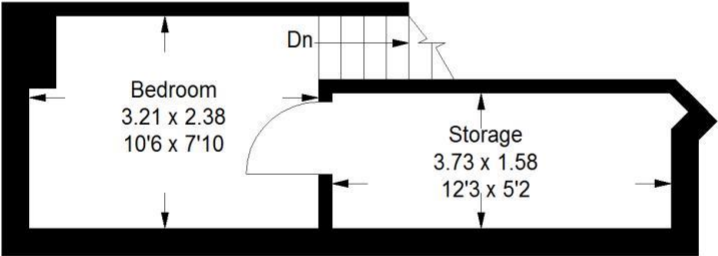
**Furnished**

**Available November**

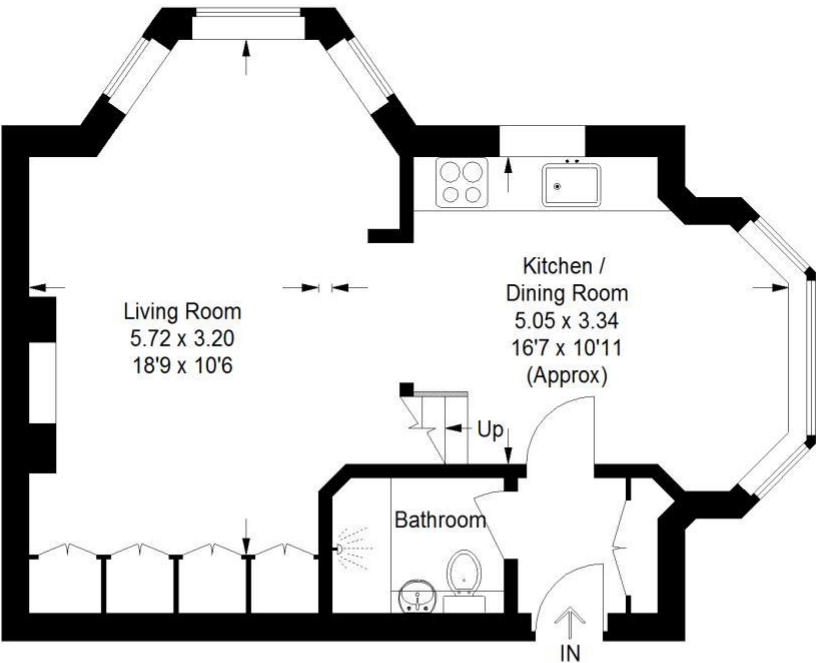


# Derbyshire Gardens, W4

Approximate Gross Internal Area :-  
42 sq m / 452 sq ft  
Mezzanine :- 14 sq m / 151 sq ft  
Total :- 56 sq m / 603 sq ft



Mezzanine



Ground Floor

This floor plan is for identification purposes only, and is not to scale.  
Door and window measurements and positions are approximate.  
©Tusker Rock | 07912 619956 | [www.tuskerrock.com](http://www.tuskerrock.com)

This floorplan is for illustration purposes only and is not to scale. The position and size of doors, windows, appliances and other features are approximate.

