



Landford Road, SW15

£5,500 per month *Unfurnished*



A well-presented five bedroom family house positioned in this very popular location close to numerous excellent schools

KEY FEATURES

- Semi-Detached
- Circa 2,200 sq ft
- South Facing Garden
- Prime West Putney



Putney

020 8877 1000 | putney@winkworth.co.uk

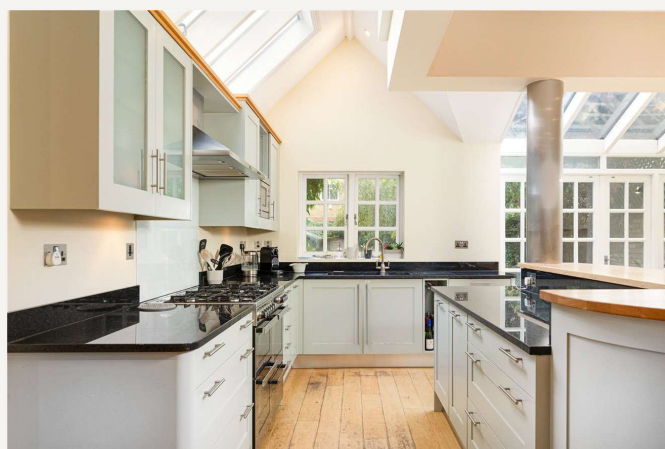
Winkworth

for every step...



The house comprises of an entrance lobby, entrance hall, reception room, cloakroom, utility room, kitchen, dining room, cellar, master bedroom with luxury en-suite shower room and dressing room, four further bedrooms, family bathroom, 44ft south facing rear garden with side access.

Landford Road is in West Putney and is conveniently located for the many amenities of Putney High Street and Upper Richmond Road. Putney is served by fantastic transport links such as Putney Mainline station and two underground stations, East Putney and Putney Bridge on the District line. You are walking distance from the River Thames embankment, where you have the increasingly popular Thames Clipper, which is a boat service running to and from the City.





MATERIAL INFO

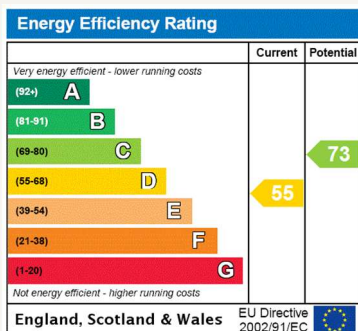
Deposit: £7,615.38

Holding Deposit: £1,269.23

Council Tax Band: Wandsworth G



Floorplan produced for WINKWORTH by Mays Floorplans ©. Tel 020 8871 4668
Illustration for identification purposes only, not to scale
All measurements are maximum, and includes wardrobes and window bays where applicable



For more information, scan the QR code or visit the link below



<https://www.winkworth.co.uk/rent/property/PUT120432>

Where no figures are shown, we have been unable to ascertain the information. All figures that are shown were correct at the time of printing.

Putney

020 8877 1000 | putney@winkworth.co.uk

Winkworth

for every step...

Winkworth wishes to inform prospective buyers and tenants that these particulars are a guide and act as information only. All our details are given in good faith and believed to be correct at the time of printing but they don't form part of an offer or contract. No Winkworth employee has authority to make or give any representation or warranty in relation to this property. All fixtures and fittings, whether fitted or not are deemed removable by the vendor unless stated otherwise and room sizes are measured between internal wall surfaces, including furnishings.