



CENTRAL HILL, LONDON, SE19
£2,100 PER MONTH UNFURNISHED

BEAUTIFULLY PRESENTED TWO BEDROOM HOUSE

Crystal Palace | 02038693222 | crystalpalace@winkworth.co.uk

Winkworth

for every step...

winkworth.co.uk



DESCRIPTION:

A beautifully presented two-bedroom house is available to rent in the heart of Crystal Palace.

The property has been finished to a high standard throughout and comprises entrance hallway, separate fitted kitchen, reception with wood burner fire & conservatory which offers an abundance of natural light. Upstairs you will find both bedrooms, each with great inbuilt storage & full bathroom.



Winkworth

for every step...



Winkworth

for every step...

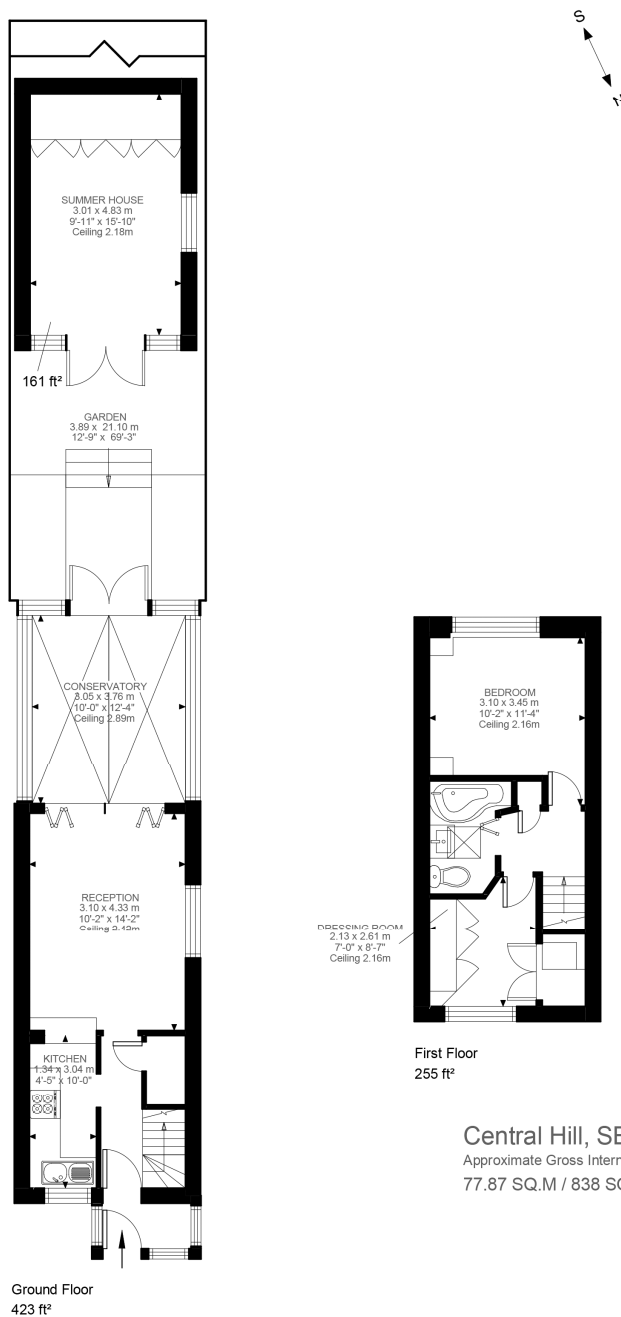


Illustration for identification purposes only. Not to scale.
Floor Plan Drawn According To RICS Guidelines.

This floorplan is for illustration purposes only and is not to scale. The position and size of doors, windows, appliances and other features are approximate.

Crystal Palace | 02038693222 | crystalpalace@winkworth.co.uk

Winkworth

for every step...

[winkworth.co.uk](https://www.winkworth.co.uk)

Winkworth wishes to inform prospective buyers and tenants that these particulars are a guide and act as information only. All our details are given in good faith and believed to be correct at the time of printing but they don't form part of an offer or contract. No Winkworth employee has authority to make or give any representation or warranty in relation to this property. All fixtures and fittings, whether fitted or not are deemed removable by the vendor unless stated otherwise and room sizes are measured between internal wall surfaces, including furnishings.