



ST MARYS GROVE, W4

£475,000 SHARE OF FREEHOLD

FIRST FLOOR CONVERSION FLAT IN A LOVELY TREE-LINED ROAD IN GROVE PARK

Chiswick | 020 8994 7096 | chiswick@winkworth.co.uk

Winkworth

for every step...

winkworth.co.uk



DESCRIPTION:

This light and airy, mid-floor flat in a handsome converted period terraced house situated in a lovely quiet street in Grove Park. The property comprises of a reception room with separate eat-in kitchen, two double bedrooms and a white bathroom suite.

This split level flat needs updating but a buyer could make their own mark on the flat. The heating is gas central heating and it has double glazed casement windows to the front. High ceilings and neutrally decorated throughout.

St Mary's Grove is in the heart of Grove Park, Chiswick with the majority of houses still whole, making a flat in such a nice road quite limited.

Grove Park has a unique "village feel" serviced by its own shops and restaurants. The location has two popular schools (Grove Park and Strand on the Green). Access to the A4/M4 is close by, as are Chiswick Station and Gunnersbury Tube Station with trains to Central London.

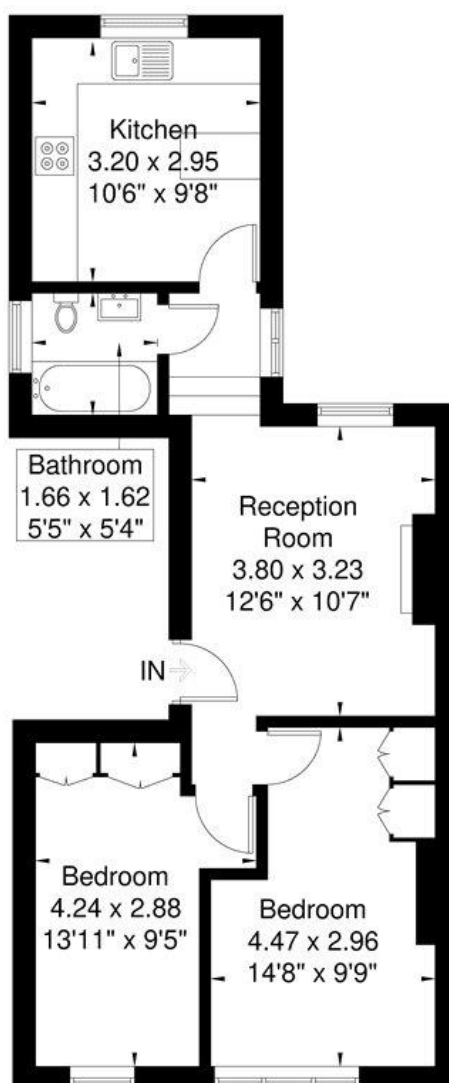
ACCOMMODATION

- Conversion flat
- First floor
- Period terrace house
- Two double bedrooms
- Light reception
- Eat-in kitchen
- Share of freehold
- Council tax band E



St Mary's Grove

Approximate Gross Internal Area = 50.6 sq m / 544 sq ft

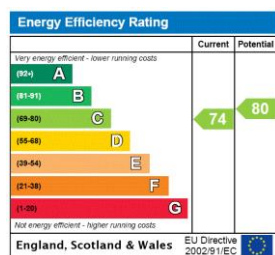


First Floor

Winkworth

Although every attempt has been made to ensure accuracy, all measurements are approximate.
The floorplan is for illustrative purposes only and not to scale.
© www.prspective.co.uk

This floorplan is for illustration purposes only and is not to scale. The position and size of doors, windows, appliances and other features are approximate.



Chiswick | 020 8994 7096 | chiswick@winkworth.co.uk

Winkworth

for every step...

winkworth.co.uk

Winkworth wishes to inform prospective buyers and tenants that these particulars are a guide and act as information only. All our details are given in good faith and believed to be correct at the time of printing but they don't form part of an offer or contract. No Winkworth employee has authority to make or give any representation or warranty in relation to this property. All fixtures and fittings, whether fitted or not are deemed removable by the vendor unless stated otherwise and room sizes are measured between internal wall surfaces, including furnishings.