



Inglis Way, London, NW7

£925,000 *Leasehold*



Winkworth is pleased to offer this luxury two bedroom top floor apartment set in 'The Claves' eco world development, located within close proximity to Mill Hill East (Northern Line) underground station, local amenities, such as Waitrose Supermarket, Virgin Active Gymnasium and Bittacy Hill Park. The property comprises of two double bedrooms with en suite and a dressing room to the primary bedroom, modern tiled bathroom, a spacious open plan fully fitted kitchen/living room with access to a large roof terrace and a further study room. Further benefits include one underground parking space, underfloor heating, lift in block, concierge, gym, cinema room, meeting/function rooms, games room, and communal gardens. Offered on a chain free basis.



Finchley

020 8349 3388 | finchley@winkworth.co.uk

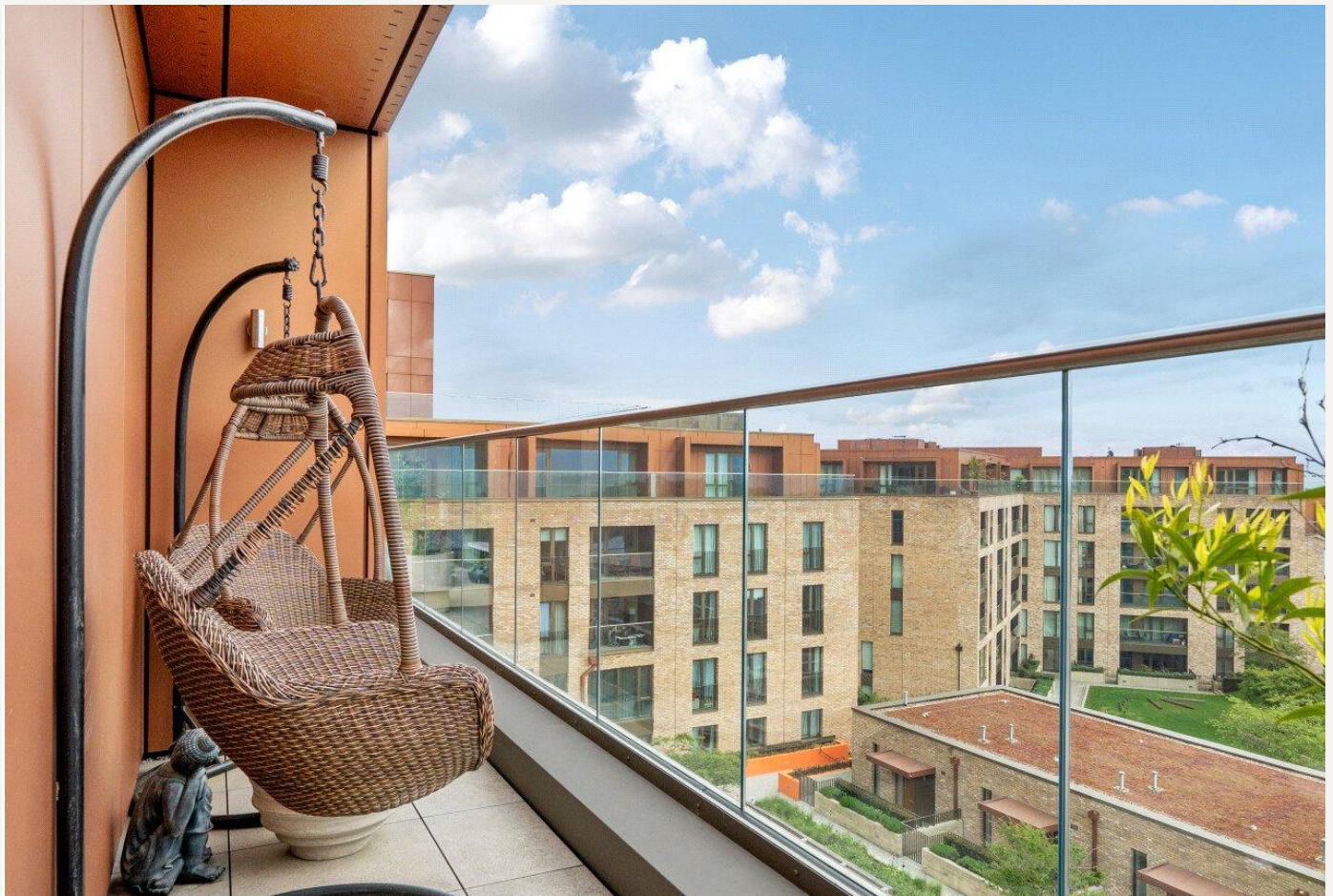
Winkworth

for every step...



- Modern development
- Ideal location for amenities & transport links
- Penthouse
- Top floor with lift
- Open plan living
- En suite & Dressing room to primary bedroom
- Secure parking
- Communal Gym & Cinema room
- Concierge





MATERIAL INFO

Tenure: Leasehold

Term: Expires 01/07/3017

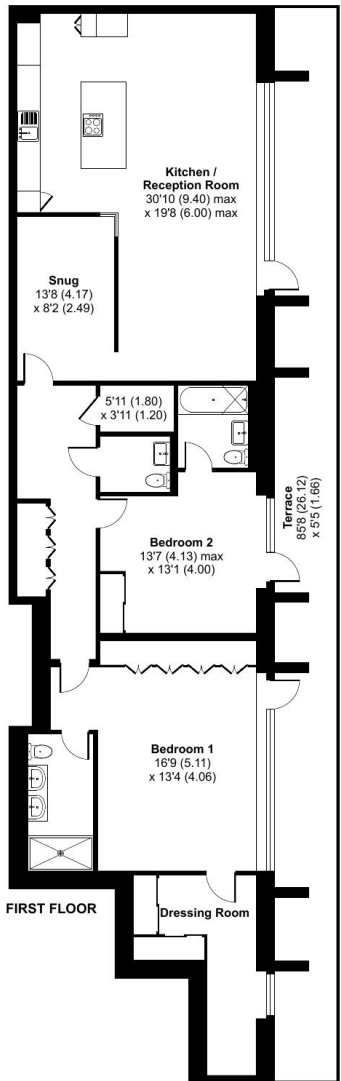
Service Charge: £7200 per annum

EPC rating: B

Inglis Way, London, NW7

Approximate Area = 1555 sq ft / 144.4 sq m

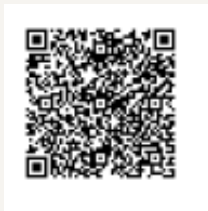
For identification only - Not to scale



Floor plan produced in accordance with RICS Property Measurement 2nd Edition, Incorporating International Property Measurement Standards (IPMS2 Residential). © nrichcom 2025. Produced for Real Estates. REF: 1283212

Score	Energy rating	Current	Potential
92+	A		
81-91	B	85 B	85 B
69-80	C		
55-68	D		
39-54	E		
21-38	F		
1-20	G		

For more information, scan the QR code or visit the link below



<https://www.winkworth.co.uk/sale/property/FIN250462>

Where no figures are shown, we have been unable to ascertain the information. All figures that are shown were correct at the time of printing.

Finchley

020 8349 3388 | finchley@winkworth.co.uk

Winkworth

for every step...

Winkworth wishes to inform prospective buyers and tenants that these particulars are a guide and act as information only. All our details are given in good faith and believed to be correct at the time of printing but they don't form part of an offer or contract. No Winkworth employee has authority to make or give any representation or warranty in relation to this property. All fixtures and fittings, whether fitted or not are deemed removable by the vendor unless stated otherwise and room sizes are measured between internal wall surfaces, including furnishings.