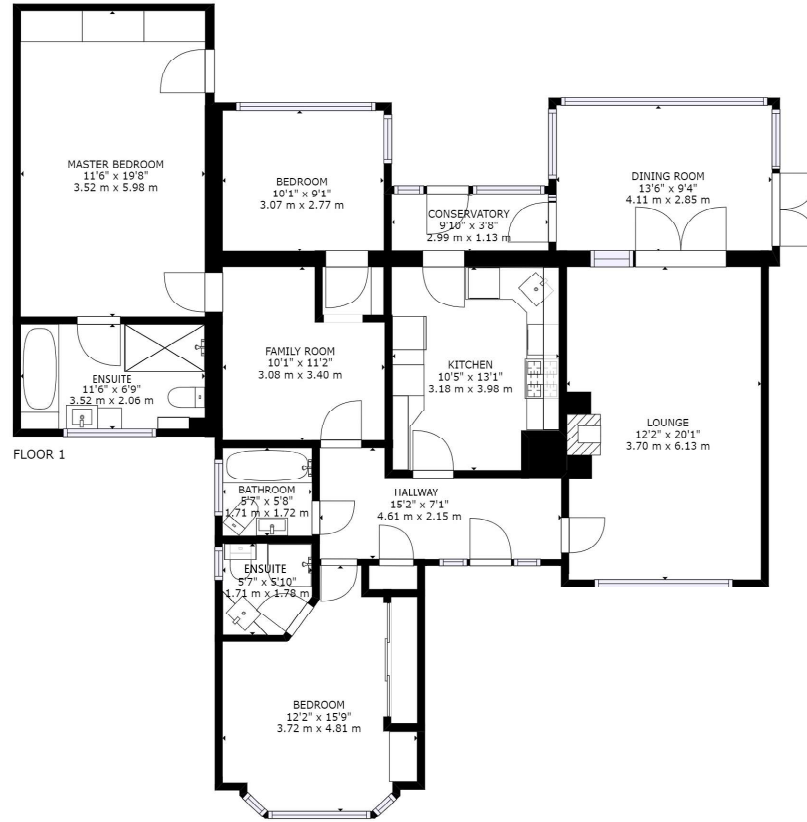




28 Linden Road
West Parley, BH22 8RR
OFFERS OVER £600,000

Winkworth



GROSS INTERNAL AREA
 FLOOR 1: 1430 sq. ft. 133 m², EXCLUDED AREAS:
 CONSERVATORY: 36 sq. ft. 3 m²
 TOTAL: 1430 sq. ft. 133 m²
 SIZES AND DIMENSIONS ARE APPROXIMATE. ACTUAL MAY VARY.





OFFERS OVER - £600,000
FREEHOLD

A fantastic opportunity to purchase this immaculate three bedroom detached bungalow with a large driveway and beautiful rear garden, positioned in a quiet West Parley cul-de-sac.

Three Bedrooms
Immaculate Throughout
Master En-suite | Large Driveway
Detached | Lovely Rear Garden
Excellent Potential To Extend
West Parley Location | Garden Room
Two/Three Reception Rooms

EPC D
Council tax band D

01202 434365
ferndown@winkworth.co.uk



LOCATION

Linden Road is a short distance from Ferndown town centre which has a range of shops, cafes and amenities including an M&S Food Hall. You can explore the outdoors at nearby Longham Lakes and the River Stour, close by bus routes give you easy access to Bournemouth & Poole, both of which have a large range of facilities as well as award winning sandy beaches. The nearby A31 provides quick access to the New Forest, Southampton and beyond for the commuter by car.

Winkworth Ferndown

406 Ringwood Road, Ferndown, Dorset, BH22 9AU

01202 434365 | ferndown@winkworth.co.uk

winkworth.co.uk/ferndown

Winkworth