



WOODBURY STREET, SW17  
OIEO £500,000 SHARE OF FREEHOLD

## A SUPERB TWO BEDROOM GROUND FLOOR MAISONETTE SITUATED CLOSE TO TOOTING BROADWAY UNDERGROUND STATION

**Tooting** | 020 8767 5221 | [tooting@winkworth.co.uk](mailto:tooting@winkworth.co.uk) 17 Upper Tooting Road,  
London, SW17 7TS

**Winkworth**

for every step...

[winkworth.co.uk](http://winkworth.co.uk)





## SUMMARY

A superb two bedroom ground floor maisonette situated close to Tooting Broadway underground station. The property benefits from a large reception room (currently used as a bedroom) to the front with a feature fireplace, two fantastic double bedrooms, a large kitchen/dining room and a family bathroom to the rear. Access into the private rear garden is from the kitchen, the garden is a generous size offering plentiful space to enjoy. Further benefits include a share of freehold and being offered with no onward chain.

Tenure: Share of Freehold

No ground rent

No service charge

Council tax: Wandsworth council tax band C

Woodbury Street is located a stones throw from Tooting Broadway Tube station and the market and is also perfectly situated for access to Tooting's many bars, restaurants and amenities, as well as St George's hospital and university.







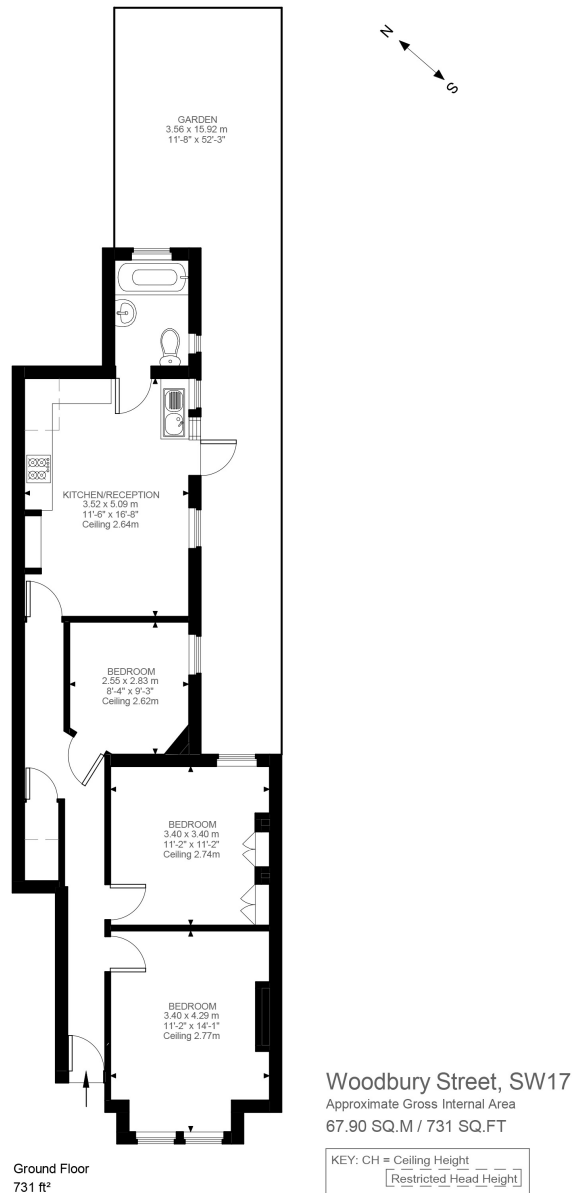
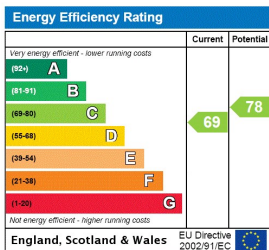


Illustration for identification purposes only. Not to scale.  
Floor Plan Drawn According To RICS Guidelines.

This floorplan is for illustration purposes only and is not to scale. The position and size of doors, windows, appliances and other features are approximate.



Tooting | 020 8767 5221 | tooting@winkworth.co.uk  
17 Upper Tooting Road, London, SW17 7TS

**Winkworth**

for every step...

winkworth.co.uk

Winkworth wishes to inform prospective buyers and tenants that these particulars are a guide and act as information only. All our details are given in good faith and believed to be correct at the time of printing but they don't form part of an offer or contract. No Winkworth employee has authority to make or give any representation or warranty in relation to this property. All fixtures and fittings, whether fitted or not are deemed removable by the vendor unless stated otherwise and room sizes are measured between internal wall surfaces, including furnishings.