



QUEENS ROAD, BERKSHIRE, RG1 4DG  
£1,200 PER MONTH FURNISHED

## MODERN ONE BEDROOM APARTMENT A SHORT WALK FROM READING TRAIN STATION

Reading | 0118 4022 300 | [reading@winkworth.co.uk](mailto:reading@winkworth.co.uk)

**Winkworth**

for every step...

[winkworth.co.uk](http://winkworth.co.uk)



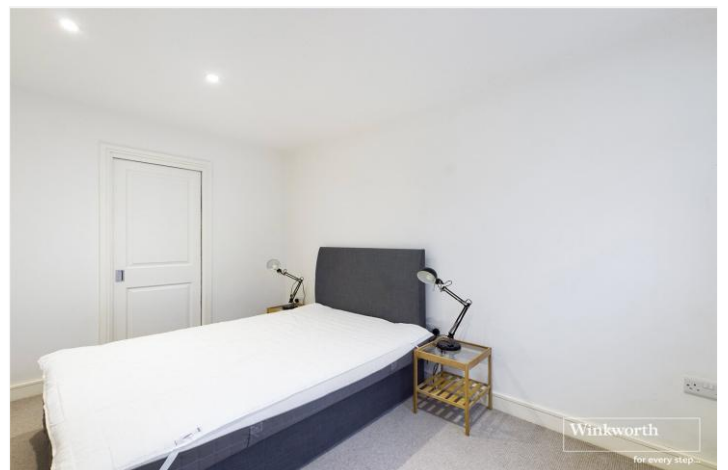


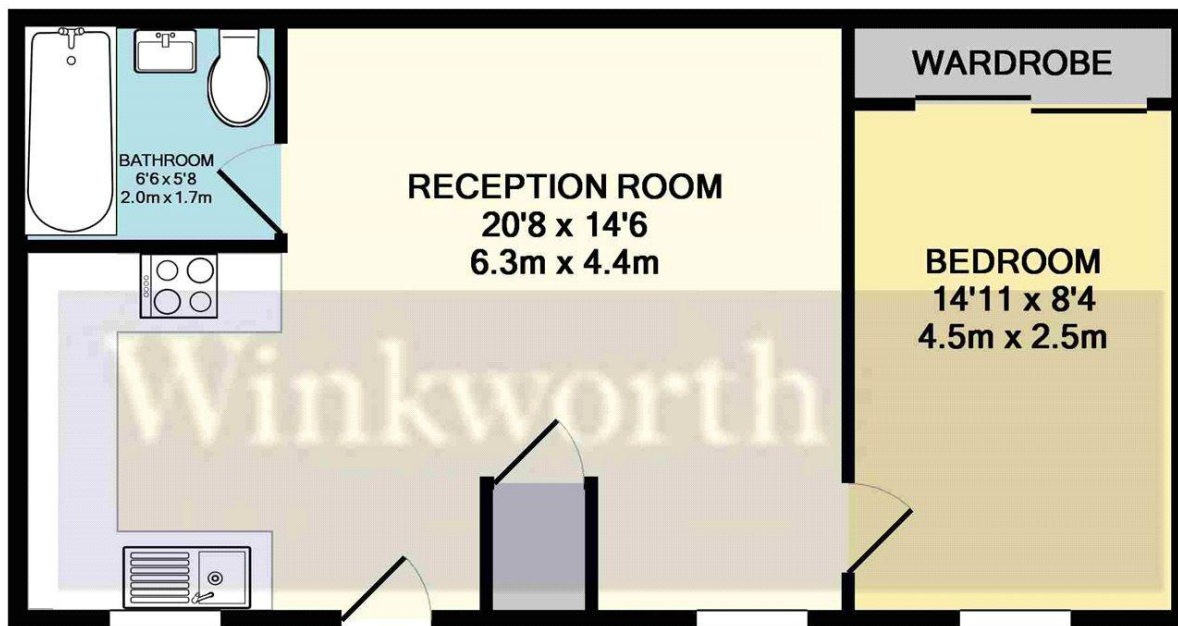
## DESCRIPTION:

Lower ground floor one bedroom apartment in a modern development on Queens Road which is a short walk from Reading train station and town centre. The property comprises open plan living room/kitchen which has Bosch integrated appliances including a dishwasher, double bedroom with built in storage and a three piece bathroom. Further benefits include private front courtyard, centrally controlled electric heating and double glazed windows throughout. No parking. Available 16th August 2025. Furnished.

## AT A GLANCE

- One bedroom apartment
- Modern kitchen and bathroom
- Private front courtyard
- Council tax band B
- No parking
- Available 16th August
- Furnished

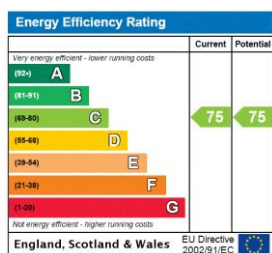




TOTAL APPROX. FLOOR AREA 435 SQ.FT. (40.4 SQ.M.)

Whilst every attempt has been made to ensure the accuracy of the floor plan contained here, measurements of doors, windows, rooms and any other items are approximate and no responsibility is taken for any error, omission, or mis-statement. This plan is for illustrative purposes only and should be used as such by any prospective purchaser. The services, systems and appliances shown have not been tested and no guarantee as to their operability or efficiency can be given  
Made with Metropix ©2018

This floorplan is for illustration purposes only and is not to scale. The position and size of doors, windows, appliances and other features are approximate.



Deposit: £1,384.62

Holding Deposit: £276.92

Council Tax Band: B

Where no figures are shown, we have been unable to ascertain the information. All figures that are shown were correct at the time of printing.

Reading | 0118 4022 300 | [reading@winkworth.co.uk](mailto:reading@winkworth.co.uk)

**Winkworth**

for every step...

[winkworth.co.uk](http://winkworth.co.uk)

Winkworth wishes to inform prospective buyers and tenants that these particulars are a guide and act as information only. All our details are given in good faith and believed to be correct at the time of printing but they don't form part of an offer or contract. No Winkworth employee has authority to make or give any representation or warranty in relation to this property. All fixtures and fittings, whether fitted or not are deemed removable by the vendor unless stated otherwise and room sizes are measured between internal wall surfaces, including furnishings.