



**BIRD IN HAND MEWS, LONDON, SE23**  
**£275,000 SHARE OF FREEHOLD**

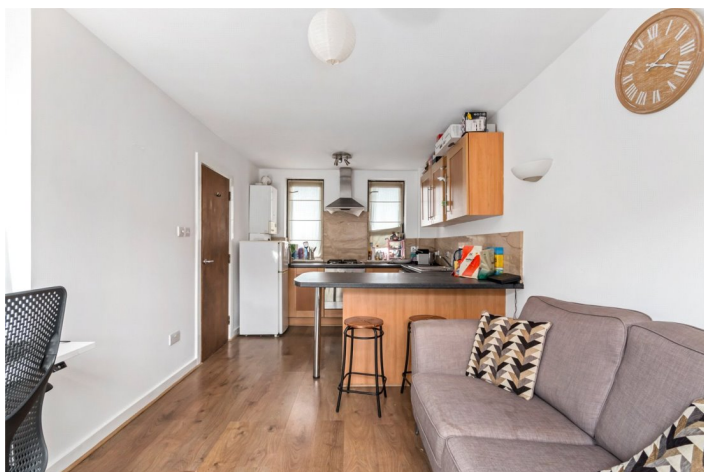
**Forest Hill | | [foresthill@winkworth.co.uk](mailto:foresthill@winkworth.co.uk)**





### DESCRIPTION:

Situated in the heart of SE23, this charming one-bedroom mews property offers a fantastic combination of comfort and practicality. Boasting a bright and spacious living area, along with a generously sized bedroom, the layout provides flexibility for modern living. The property is offered chain-free, offering a hassle-free move for those looking to settle quickly.

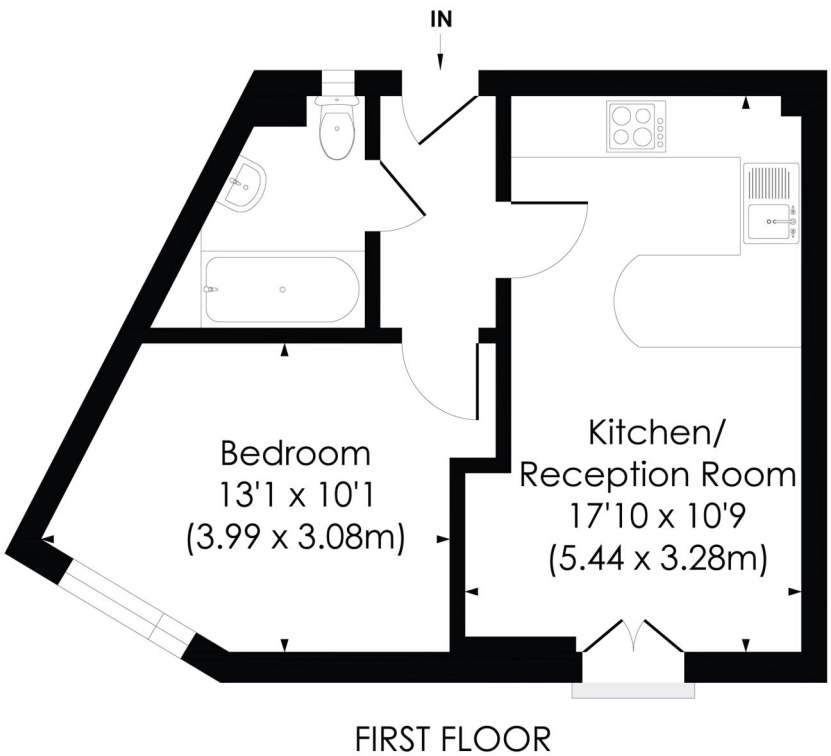




BIRD IN HAND MEWS, SE23

Approx. Gross Internal Floor Area

370 Sq. ft/34.33 Sq. m



© Pixangle Property Marketing Ltd. info@pixangle.com Tel: 0208 870 2118

pixangle  
PROPERTY MARKETING

This floor plan has been prepared for the purpose of illustration only in accordance with the latest RICS code of measuring practice and is not to scale. All measurements and areas are approximate and whilst every effort has been made to ensure the accuracy of the plan contained here, no responsibility is taken for any error, omission or misstatement.

This floorplan is for illustration purposes only and is not to scale. The position and size of doors, windows, appliances and other features are approximate.

Tenure: Share of Freehold

