



WORBECK ROAD, SE20
£1,850 PER MONTH UNFURNISHED

WELL PRESENTED THREE BEDROOM MAISONETTE FOR RENT

Crystal Palace | 02038693222 | crystalpalace@winkworth.co.uk

Winkworth

for every step...

winkworth.co.uk



DESCRIPTION:

Winkworth is pleased to offer this three-bedroom first floor maisonette for rent located on a quiet residential road in Penge.

The property is located on the first floor and comprises separate fitted modern kitchen with door out to the private section of garden below. Full bathroom and dining room with beautiful feature fireplace. Second, reception room to the front of the property with bay window allowing for an abundance of natural light. One large double bedroom, one smaller, second double bedroom and a third, single bedroom.

The property is offered unfurnished & available from the end of March.

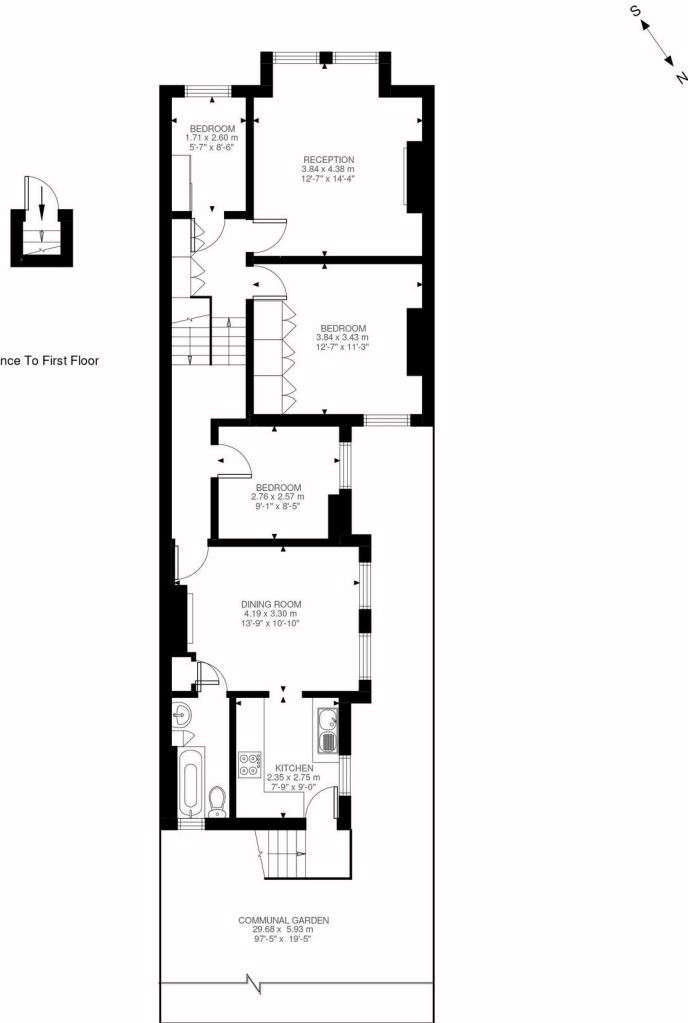
Please be advised the private section of garden isn't fenced off to the other flat.

AT A GLANCE

- Three bedrooms
- First floor maisonette
- Two receptions
- Private section of garden
- Separate modern kitchen
- Unfurnished
- Holding Fee: £426.92 (1 weeks rent)
- Deposit: £2,134.61 (5 weeks rent)







Entrance To First Floor
7 ft²

First Floor
865 ft²

Worbeck Road, SE20
Approximate Gross Internal Area
81.02 SQ.M / 872 SQ.FT

Illustration for identification purposes only. Not to scale.
Floor Plan Drawn According To RICS Guidelines.

This floorplan is for illustration purposes only and is not to scale. The position and size of doors, windows, appliances and other features are approximate.

| Energy Efficiency Rating | | |
|---|---------|-----------|
| | Current | Potential |
| Very energy efficient - lower running costs | | |
| (92-100) A | | |
| (81-91) B | | |
| (69-80) C | 75 | 80 |
| (55-68) D | | |
| (39-54) E | | |
| (21-38) F | | |
| (1-20) G | | |
| Not energy efficient - higher running costs | | |
| England, Scotland & Wales EU Directive 2002/91/EC | | |

Deposit: £0.00

Holding Deposit:

Council Tax Band: D

Where no figures are shown, we have been unable to ascertain the information. All figures that are shown were correct at the time of printing.

Winkworth

for every step...

Crystal Palace | 02038693222 | crystalpalace@winkworth.co.uk

winkworth.co.uk

Winkworth wishes to inform prospective buyers and tenants that these particulars are a guide and act as information only. All our details are given in good faith and believed to be correct at the time of printing but they don't form part of an offer or contract. No Winkworth employee has authority to make or give any representation or warranty in relation to this property. All fixtures and fittings, whether fitted or not are deemed removable by the vendor unless stated otherwise and room sizes are measured between internal wall surfaces, including furnishings.