



ELSTREE WAY, HERTFORDSHIRE, WD6

**£323,000 LEASEHOLD**

## A MODERN TWO DOUBLE BEDROOM APARTMENT LOCATED ON THE SECOND FLOOR OF THIS LUXURY DEVELOPMENT

**Borehamwood** | 020 8953 8899 | [borehamwood@winkworth.co.uk](mailto:borehamwood@winkworth.co.uk)



### DESCRIPTION:

A Modern and well presented two double bedroom second floor apartment with balcony located in a prime location, a short walk from the new Sky Studios and 1.3 mile away to the train station and Borehamwood High Street and has easy access to the A1, M1 and M25.

The development has been constructed to an exacting standard and features an on-site private gym, concierge service, 24hour CCTV, three passenger lifts and gated parking.

Service Charge - awaiting information from seller

Ground Rent - awaiting information from seller

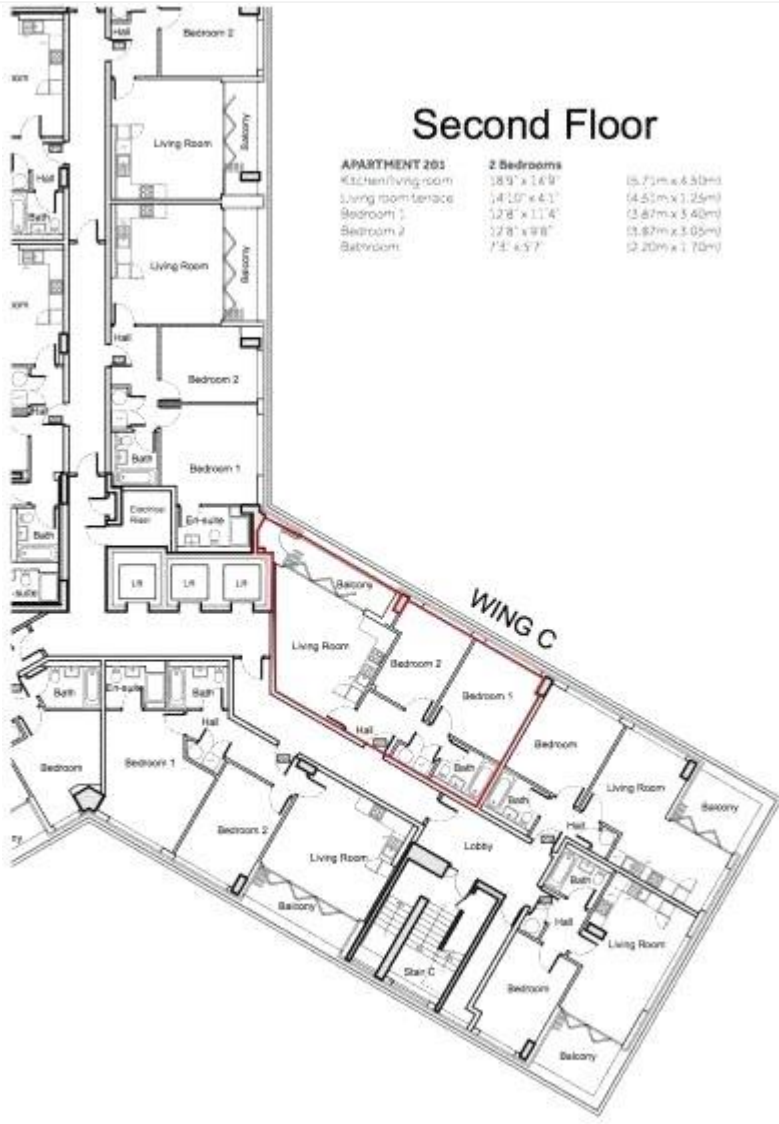
Council Tax Band D

### AT A GLANCE

- 2 Bedrooms
- Balcony
- Lift
- Residents Gym
- Concierge
- Secure Parking







## Second Floor

APARTMENT 201	2 Bedrooms	
Kitchen/living room	18'9" x 16'9"	(5.71m x 5.10m)
Living room terrace	14'10" x 4'1"	(4.57m x 1.25m)
Bedroom 1	12'8" x 11'4"	(3.87m x 3.49m)
Bedroom 2	12'8" x 9'8"	(3.87m x 2.95m)
Bathroom	7'5" x 5'7"	(2.29m x 1.70m)

This floorplan is for illustration purposes only and is not to scale. The position and size of doors, windows, appliances and other features are approximate.

