



Maisemore Mansions, London, NW6

£1,950,000 *Share of Freehold*



A spacious top-floor flat in the popular Maisemore Mansions, NW6, offering four bedrooms, two reception rooms, and 1,937 sq ft of versatile living space. The property boasts excellent natural light and period character, with the rare bonus of access to an unofficial roof terrace for open views and outdoor entertaining. Conveniently located, just 0.12 miles from Finchley Road station and 0.6 miles from West Hampstead station, with easy access to shops, cafés, and local amenities.



Winkworth West Hampstead

020 7483 7602 | westhampstead@winkworth.co.uk

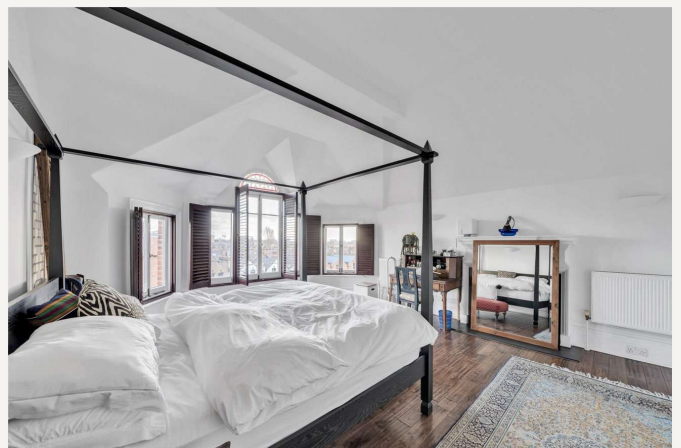
Winkworth

for every step...



KEY FEATURES

- Four Double Bedrooms
- Family Bathroom
- Kitchen / Breakfast Room
- Two Reception Rooms
- Guest Cloakroom
- Communal Gardens



MATERIAL INFO

Tenure: Share of Freehold

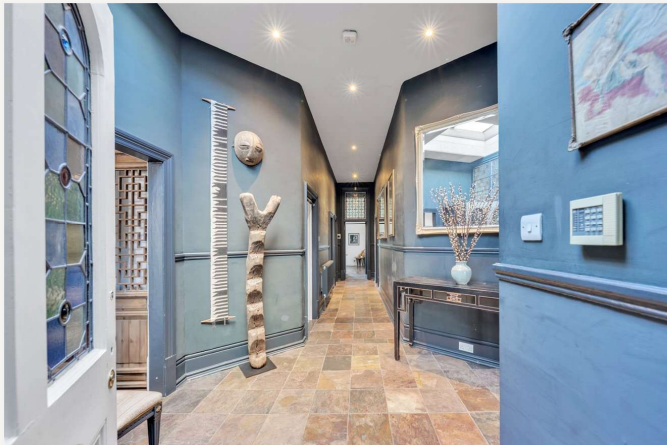
Term: 978 years

Service Charge: £4,500 per annum

Council Tax Band: G

EPC rating: D





Score	Energy rating	Current	Potential
92+	A		
81-91	B		
69-80	C		76 C
55-68	D	55 D	
39-54	E		
21-38	F		
1-20	G		

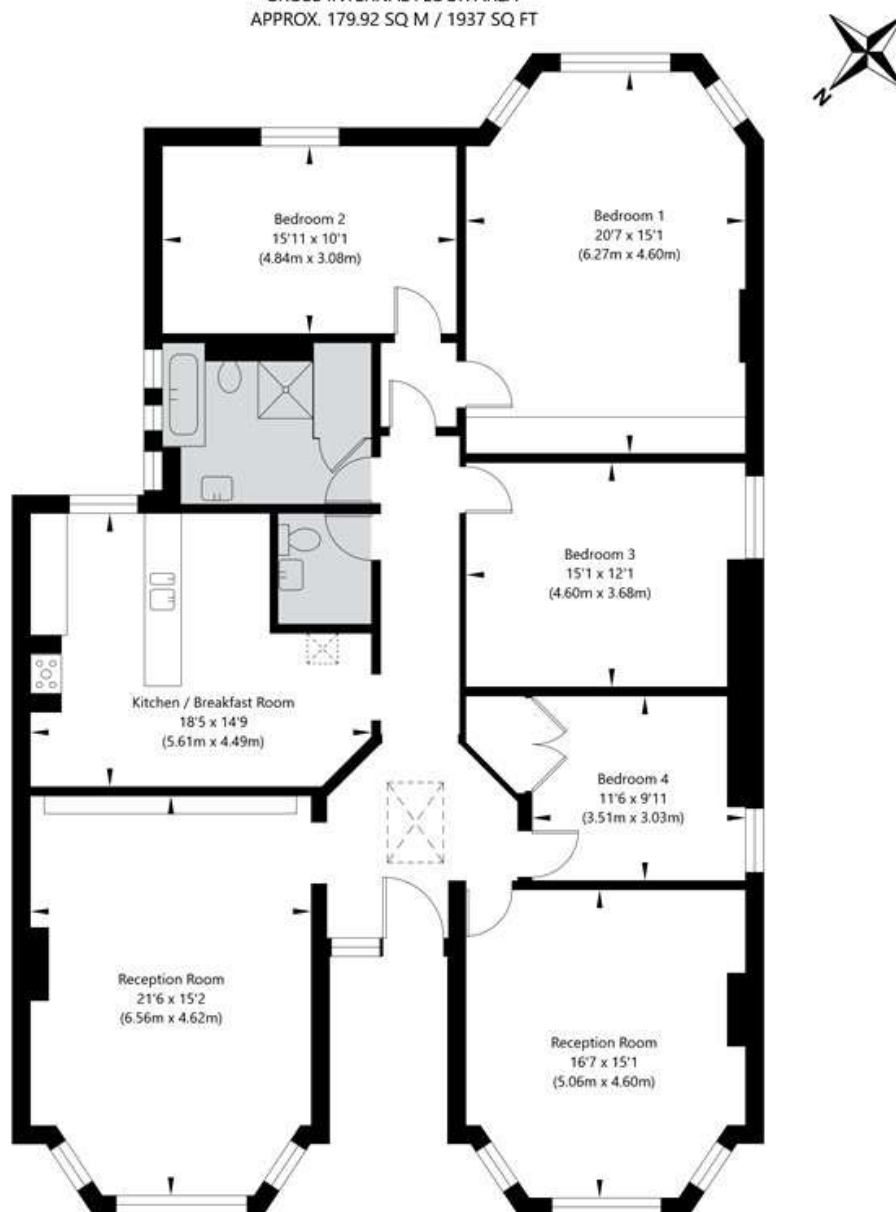
For more information, scan the QR code or visit the link below



<https://www.winkworth.co.uk/sale/property/WHP250187>

Maisemore Mansions, 35 Canfield Gardens, London NW6 3JN

Fourth Floor
GROSS INTERNAL FLOOR AREA
APPROX. 179.92 SQ M / 1937 SQ FT



APPROXIMATE GROSS INTERNAL FLOOR AREA 179.92 SQ M / 1937 SQ FT
THIS FLOOR PLAN IS FOR ILLUSTRATIVE PURPOSES ONLY AND
SHOULD BE USED FOR THIS PURPOSE BY PROSPECTIVE APPLICANTS AS ITS NOT TO SCALE.

(c) AMBERSHORE PIX LIMITED / PHOTO - VIDEO - FLOOR PLANS / 0800 999 1577 / WWW.AMBERSHOREPIX.CO.UK

Where no figures are shown, we have been unable to ascertain the information. All figures that are shown were correct at the time of printing.

Winkworth West Hampstead

020 7483 7602 | westhampstead@winkworth.co.uk

Winkworth

for every step...

Winkworth wishes to inform prospective buyers and tenants that these particulars are a guide and act as information only. All our details are given in good faith and believed to be correct at the time of printing but they don't form part of an offer or contract. No Winkworth employee has authority to make or give any representation or warranty in relation to this property. All fixtures and fittings, whether fitted or not are deemed removable by the vendor unless stated otherwise and room sizes are measured between internal wall surfaces, including furnishings.