



GOLDRING COURT, GOLDRING WAY, LONDON COLNEY, ST. ALBANS, AL2
£1,250 PER MONTH UNFURNISHED

ONE BEDROOM FIRST FLOOR FLAT IN NAPSURY PARK

Borehamwood | 020 8953 8899 | borehamwood@winkworth.co.uk

Tenant Fees Apply: Details of fees for tenant referencing, tenancy agreement admin fees and renewal fees are available on the Winkworth website and the link can be found with the displayed rent for the property. Tenants should ensure they are fully conversant with these upfront fees and other costs that are involved at the outset of the tenancy before making an offer to rent and your local Winkworth office will provide written details upon request.

[winkworth.co.uk](https://www.winkworth.co.uk)

Winkworth

for every step...

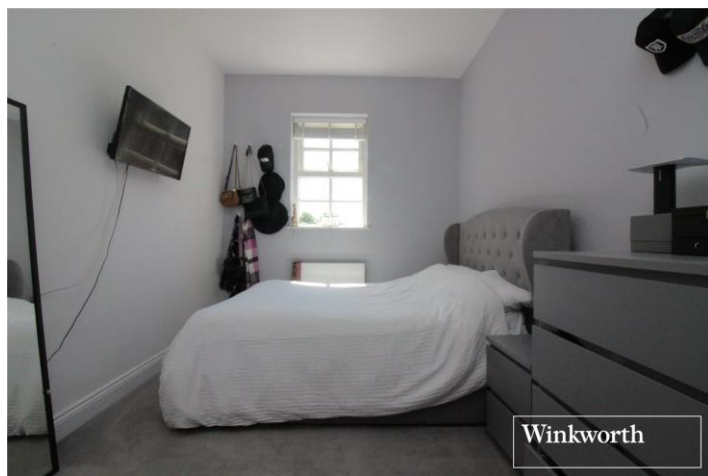


DESCRIPTION:

This one bedroom first floor flat with balcony in this recently built purpose built block situated in the sought after Napsbury Park Development in London Colney. These fantastic apartments benefit from a large open-plan reception to fitted kitchen, great size master bedroom, tiled main bathroom, parking and use of well-kept communal grounds. Available on an unfurnished basis from the 6th of March, viewings come highly recommended.

Winkworth

for every step...

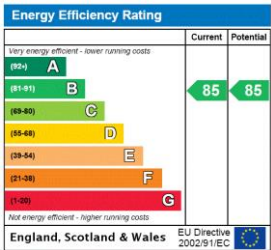


Winkworth

for every step...



This floorplan is for illustration purposes only and is not to scale. The position and size of doors, windows, appliances and other features are approximate.



Borehamwood | 020 8953 8899 | borehamwood@winkworth.co.uk



for every step...

winkworth.co.uk

Winkworth wishes to inform prospective buyers and tenants that these particulars are a guide and act as information only. All our details are given in good faith and believed to be correct at the time of printing but they don't form part of an offer or contract. No Winkworth employee has authority to make or give any representation or warranty in relation to this property. All fixtures and fittings, whether fitted or not are deemed removable by the vendor unless stated otherwise and room sizes are measured between internal wall surfaces, including furnishings.