



## **PRINCE EDWARD MANSIONS, LONDON, W2**

**£1,850,000 SHARE OF FREEHOLD (920 YEARS REMAINING)**

**A WONDERFULLY BRIGHT AND AIRY TOP FLOOR MAISONETTE IN THIS SOUGHT-AFTER MANSION BLOCK WITH LIFT, PORTER AND A FANTASTIC PRIVATE ROOF TERRACE.**

**3 Bedrooms, 1 Reception Room, 1 Bathroom, Maisonette, Upper Floor with Lift, Roof Terrace, Period, Porter/Concierge, 1010 Approx Sq Ft, Service charge £6,800 pa, Ground Rent N/A**

**Winkworth**

Notting Hill Sales | 0207 727 3227 | nottinghill@winkworth.co.uk

[winkworth.co.uk](http://winkworth.co.uk)

for every step...



### DESCRIPTION:

This exquisite mansion block flat comprises; entrance hall; semi-open plan kitchen with west facing window, spacious living room with wood floors and separate dining room/bedroom on same level. Stairs lead up to two further bedrooms and family bathroom with French doors from second bedroom out to the fabulous private terrace.

### LOCATION:

Prince Edward Mansions is an imposing red brick mansion building located at the corner of Moscow Road and Hereford Road, just a moments' walk from Notting Hill Gate and Kensington Gardens.

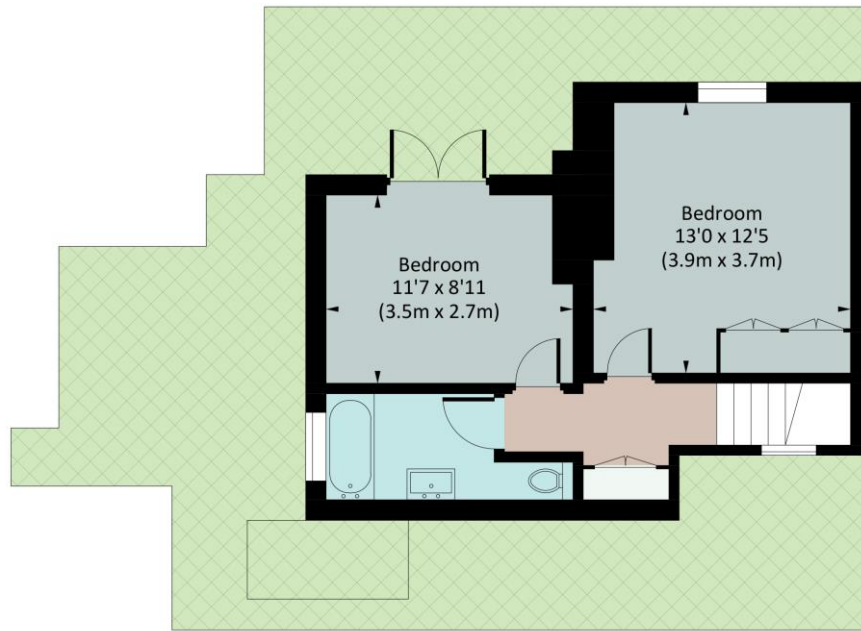
### LOCAL AUTHORITY AND COUNCIL TAX BAND:

City of Westminster (Band G)

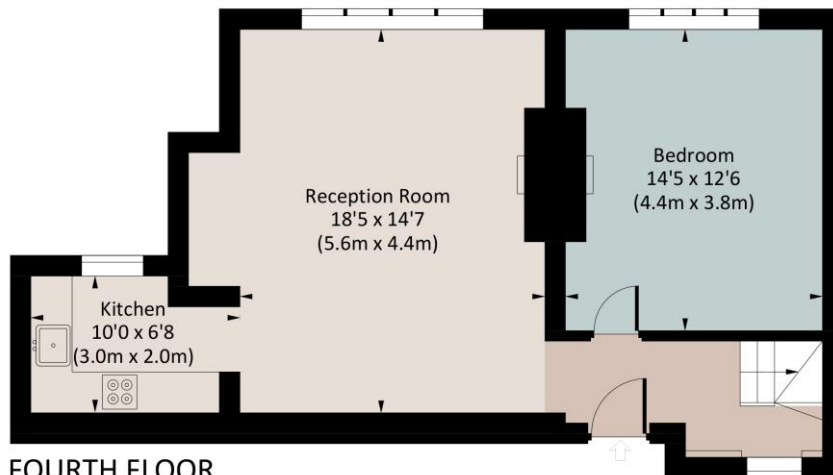


# PRINCE EDWARD, MANSIONS, W2

Approximate Gross Internal Area  
93.9 sq m / 1010 sq ft



FIFTH FLOOR

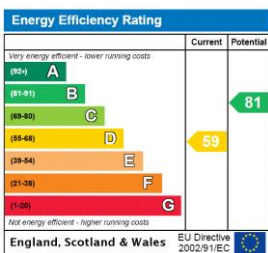


FOURTH FLOOR



All measurements have been made in accordance with RICS code of Measuring Practice which are approximate only and only for illustrative purposes. For the avoidance of doubt, Dowling Jones Design shall not be liable for any reliance on these measurements. © 2020 www.dowlingjones.com 020 7610 9933

This floorplan is for illustration purposes only and is not to scale. The position and size of doors, windows, appliances and other features are approximate.



### Utilities

- Gas – Mains
- Electricity – Mains
- Waste – Mains Sewerage
- Water – Mains
- Broadband – Fiber

Notting Hill Sales | 0207 727 3227 | nottinghill@winkworth.co.uk



winkworth.co.uk

for every step...

winkworth wishes to inform prospective buyers and tenants that these particulars are a guide and act as information only. All our details are given in good faith and believed to be correct at the time of printing but they don't form part of an offer or contract. No Winkworth employee has authority to make or give any representation or warranty in relation to this property. All fixtures and fittings, whether fitted or not are deemed removable by the vendor unless stated otherwise and room sizes are measured between internal wall surfaces, including furnishings.