



**ROSEWOOD HOUSE, HENDON, LONDON, NW4**  
**£450,000 SHARE OF FREEHOLD**

**A WELL PRESENTED THREE BEDROOM APARTMENT WELL  
LOCATED IN HENDON CLOSE TO EASY ACCESS TO THE M1  
MOTORWAY AND/OR INTO CENTRAL LONDON.**

Hendon | 020 8202 1031 | [hendon@winkworth.co.uk](mailto:hendon@winkworth.co.uk)

**Winkworth**

for every step...

*winkworth.co.uk*



## DESCRIPTION:

A well presented three bedroom apartment well located in Hendon close to easy access to the M1 motorway and/or into central London. The property comprises a fully fitted separate kitchen with Bosch appliances, Quartz worktops, large American style fridge/freezer, induction HOB and Franke sinks. Further benefits include large master bedroom with fitted storage, second well sized double bedroom, third bedroom/study, tiled family bathroom suite with shower and a spacious living room with lighted alcove feature and dining area together with access out to a private balcony overlooking the well sized communal gardens. Further benefits include utility/laundry room, recently refurbished communal areas, off street parking, ample storage, double glazed windows, made to measure blinds, entry phone and gas central heating. Share of freehold. EPC D

Early viewing recommended.

## AT A GLANCE

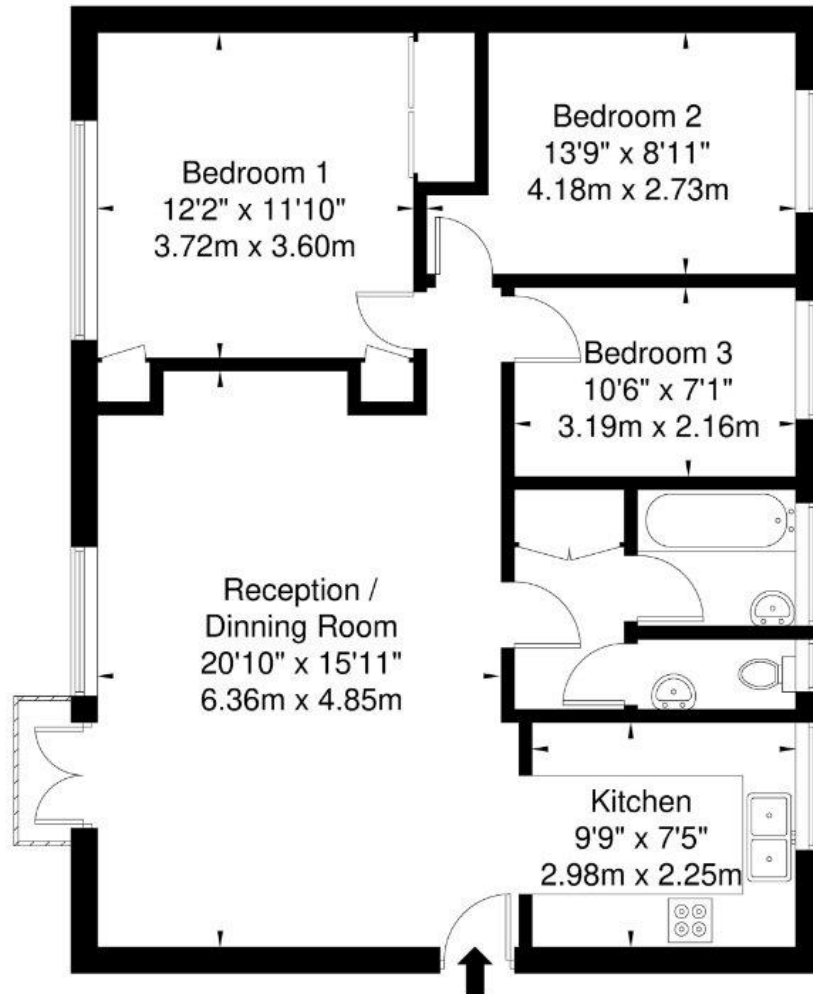
- THREE BEDROOM APARTMENT
- PURPOSE BUILT BLOCK
- WELL LOCATED FOR ACCESS IN AND OUT OF LONDON
- FULLY FITTED SEPARATE KITCHEN
- OFF STREET PARKING
- SHARE OF FREEHOLD





# Rosewood House NW4 1PB

Approx. Gross Internal Area = 82.6 sq m / 889 sq ft



Second Floor

Ref

Copyright

**BLEU  
PLAN**

The Floor plan is not to scale and measurements and areas shown are approximate and therefore should be used for illustrative purposes only. The plan has been prepared in accordance with the RICS code of Measuring Practice and whilst we have confidence in the information produced it must not be relied on. If there is any aspect of particular importance, you should carry out or commission your own inspection of the property.

Copyright @ BLEUPLAN

This floorplan is for illustration purposes only and is not to scale. The position and size of doors, windows, appliances and other features are approximate.

Hendon | 020 8202 1031 | [hendon@winkworth.co.uk](mailto:hendon@winkworth.co.uk)

**Winkworth**

for every step...

[winkworth.co.uk](http://winkworth.co.uk)

Winkworth wishes to inform prospective buyers and tenants that these particulars are a guide and act as information only. All our details are given in good faith and believed to be correct at the time of printing but they don't form part of an offer or contract. No Winkworth employee has authority to make or give any representation or warranty in relation to this property. All fixtures and fittings, whether fitted or not are deemed removable by the vendor unless stated otherwise and room sizes are measured between internal wall surfaces, including furnishings.