

Winkworth

Pulborough Road, Southfields, SW18 5UH





An attractive Edwardian home in the highly desirable Pulborough Triangle, in close proximity to the outstanding Sheringdale and St. Michael's Primary Schools. Retaining period features throughout, accommodation is based over three floors and includes a spacious kitchen/dining room, separate living room, four bedrooms and two bathrooms (one en-suite). There is scope for further extension on the ground floor, subject to the usual planning consents.

Pulborough Road is a very popular residential road in Southfields, ideally positioned for easy access to Southfields Village and Southfields Underground Station (District Line). Both Sheringdale and St. Michael's Primary Schools (Outstanding Ofsted) are within close proximity.

- EDWARDIAN HOME
- FOUR BEDROOMS
- TWO BATHROOMS
- KITCHEN/DINING ROOM
- WELL-MAINTAINED GARDEN
- FANTASTIC LOCATION
- PERIOD FEATURES
- POTENTIAL TO EXTEND (STPP)

Pulborough Road, Southfields, SW18 5UH



Freehold

Internal area

Approximate gross internal area:

Total 1,317 sq ft/ 122.3 sq m



Pulborough Road, Southfields, SW18 5UH



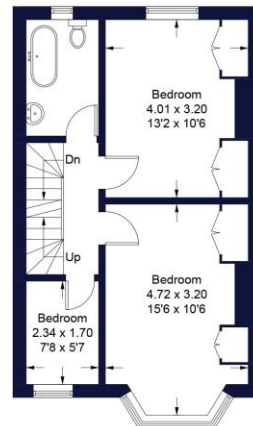
Pulborough Road

Approximate Gross Internal Area = 122.3 sq m / 1317 sq ft
(Excluding Eaves)

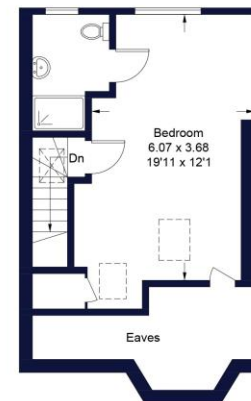
Winkworth



Ground Floor
Sq m 46.9 / Sq ft 505



First Floor
Sq m 43.2 / Sq ft 465



Second Floor
Sq m 32.2 / Sq ft 347

Illustration for identification purposes only, measurements are approximate,
not to scale. FloorplansUsketch.com © 2021 (ID739195)

W621 Ravensworth 01670 713330

Winkworth

Under the Property Misdescriptions Act these particulars are intended as a guide and act as information only. They give a fair overall description for the guidance of potential purchasers or tenants but do not constitute an offer or part of a contract. All details and approximate measurements are given in good faith and are believed to be correct at the time of printing, but any potential purchasers or tenants should not rely on the mis-statements or representations of fact but must satisfy themselves by inspection or otherwise as to their correctness. No employee of Winkworth has authority to make or give any representation or warranty to this property.

Southfields office 241 Wimbledon Park Road, London SW18 5RJ | Tel: 0208 877 1000 | E-mail: Southfields@winkworth.co.uk
winkworth.co.uk