



Giles House, London, W11

£595 per week (£2,578.33 PCM) *Furnished*



A WONDERFULLY BRIGHT AND SPACIOUS ONE DOUBLE BEDROOM FLAT WITH PRIVATE SOUTH FACING BALCONY IN THIS POPULAR BUILDING IN THE HEART OF NOTTING HILL.



**Notting Hill Lettings**

0207 727 3227 | [nottinghill@winkworth.co.uk](mailto:nottinghill@winkworth.co.uk)

**Winkworth**

for every step...





Property comprises second floor entrance (with lift), hallway with fantastic storage, open plan L shaped living room with glass sliding doors out to balcony and fully fitted open kitchen, spacious double bedroom with further storage and spacious shower room. The property is offered furnished and viewings are highly recommended.

Westbourne Grove runs through the heart of Notting Hill with many of the area's fashionable boutiques and restaurants lined up along it, all of which are just moments from this property, itself located just to the east of Ledbury Road.

#### Utilities:

Electricity – Mains

Water – Mains

Sewerage – Mains

Heating – Gas

Broadband <https://checker.ofcom.org.uk/en-gb/broadband-coverage>

Mobile Coverage <https://checker.ofcom.org.uk/en-gb/mobile-coverage>

#### MATERIAL INFO

**Deposit:** £2,975

**Holding Deposit:** £595

**Council Tax Band:** D (Westminster)



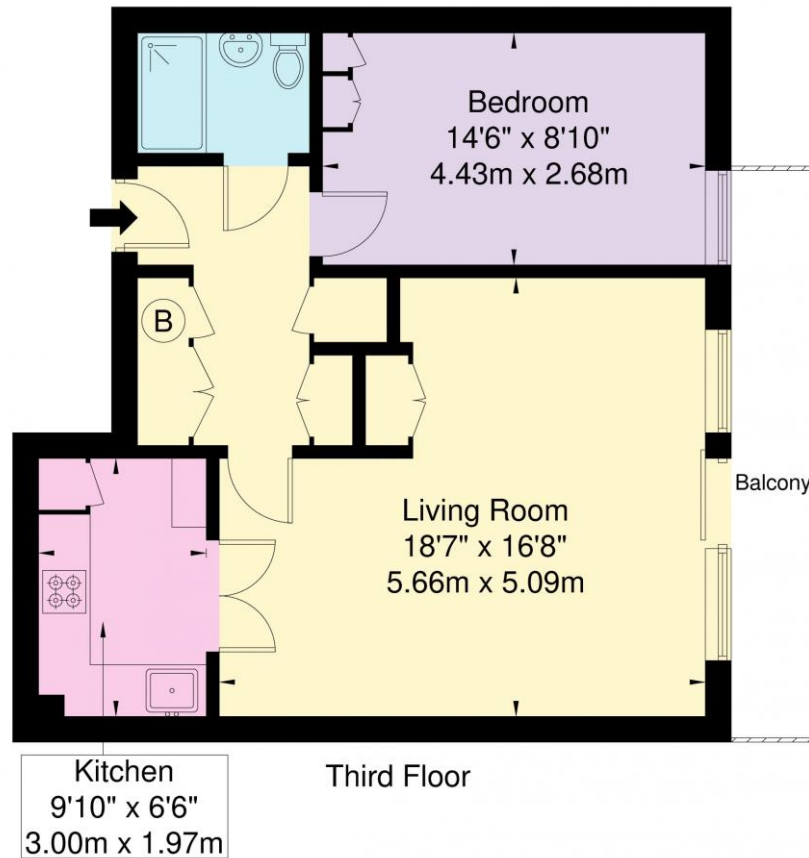
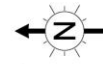






# Giles House, Westbourne Grove, W11 2RJ

Approx. Gross Internal Area = 57.5 sq m / 618 sq ft



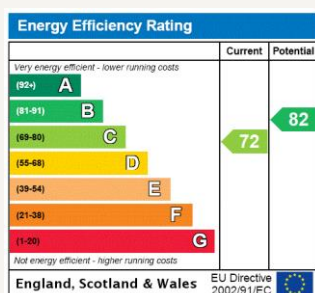
Ref

Copyright

**BLEU  
PLAN**

The Floor plan is not to scale and measurements and areas shown are approximate and therefore should be used for illustrative purposes only. The plan has been prepared in accordance with the RICS code of Measuring Practice and whilst we have confidence in the information produced it must not be relied on. If there is any aspect of particular importance, you should carry out or commission your own inspection of the property.  
Copyright @ BLEUPLAN

For more information, scan the QR code or visit the link below



<https://www.winkworth.co.uk/rent/property/NHS220071>

Where no figures are shown, we have been unable to ascertain the information. All figures that are shown were correct at the time of printing.

**Notting Hill Lettings**

0207 727 3227 | [nottinghill@winkworth.co.uk](mailto:nottinghill@winkworth.co.uk)

**Winkworth**

for every step...

Winkworth wishes to inform prospective buyers and tenants that these particulars are a guide and act as information only. All our details are given in good faith and believed to be correct at the time of printing but they don't form part of an offer or contract. No Winkworth employee has authority to make or give any representation or warranty in relation to this property. All fixtures and fittings, whether fitted or not are deemed removable by the vendor unless stated otherwise and room sizes are measured between internal wall surfaces, including furnishings.