

**LONDINIUM TOWER, MANSELL STREET, LONDON, E1**  
**£415,000 LEASEHOLD**

## **STYLISH 1-BEDROOM APARTMENT WITH EAST-FACING BALCONY**

Shoreditch | 020 7749 7650 | shoreditch@winkworth.co.uk

**Winkworth**





#### DESCRIPTION:

Set on the 7th floor of the sought-after Londinium Tower, this beautifully presented one-bedroom apartment offers a modern finish throughout and far-reaching east-facing views from a private balcony.

The bright and airy open-plan living space benefits from large windows that bring in plenty of natural light. The contemporary kitchen is fully fitted with integrated appliances and sleek cabinetry—ideal for both daily living and entertaining.

The double bedroom includes built-in storage and ample space for additional furnishings, while the stylish bathroom is finished to a high standard with modern fixtures and fittings.

The generously sized balcony provides a peaceful outdoor retreat, perfectly positioned to capture morning sunlight. It offers enough space for a small table and chairs, making it an ideal spot to enjoy breakfast or relax while taking in the expansive views over the city skyline.

Londinium Tower is ideally located moments from Tower Hill and Aldgate stations, offering excellent transport links, a secure entry system, lift access, and close proximity to the City, Wapping, and the vibrant East End.

This property is ideal for first-time buyers, professionals, or investors looking for contemporary city living in a prime location.

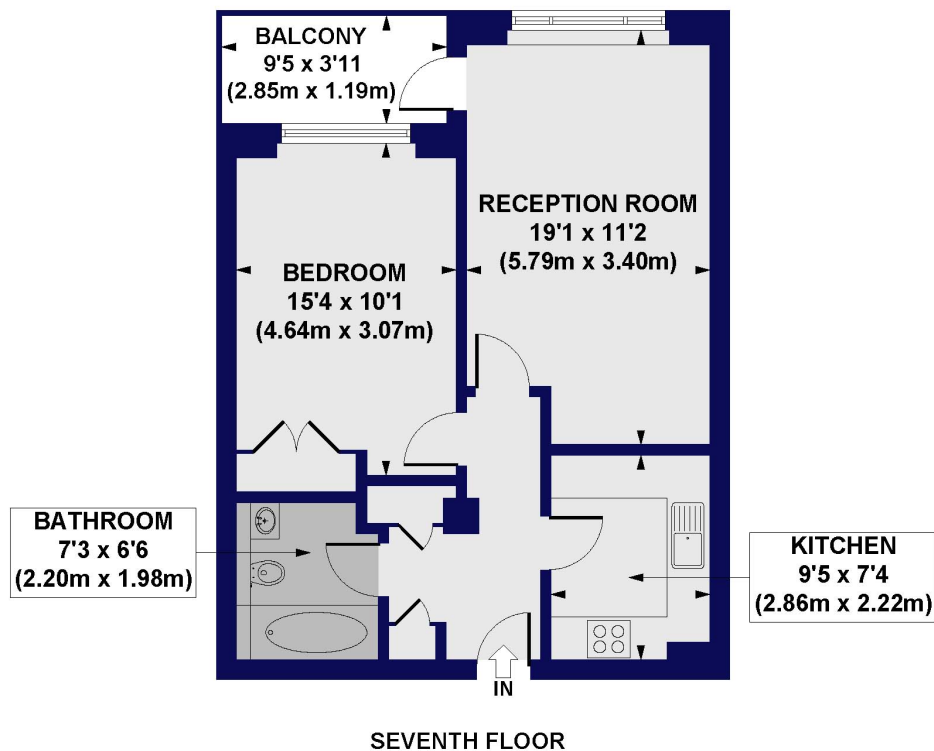
**Winkworth**





Winkworth

**Londinium Tower, Mansell Street, E1**  
**Approx. Gross Internal Floor Area 572 sq. ft / 53.17 sq. m**



All measurements of walls, doors, windows, fittings and appliances, including their size and location, are shown as standard sizes and do not constitute any warranty or representation by the seller, their agent or CP Creative. Any intending purchaser must satisfy himself by inspection or otherwise as to the correctness of the information contained in these plans. This plan is for illustrative purposes only and should be used as such by any prospective purchasers.

**Winkworth**

This floorplan is for illustration purposes only and is not to scale. The position and size of doors, windows, appliances and other features are approximate.

Score	Energy rating	Current	Potential
92+	A		
81-91	B		
69-80	C		81 B
55-68	D	71 C	
39-54	E		
21-38	F		
1-20	G		

Shoreditch | 020 7749 7650 | shoreditch@winkworth.co.uk

**Winkworth**

*winkworth.co.uk*

See things differently

Winkworth wishes to inform prospective buyers and tenants that these particulars are a guide and act as information only. All our details are given in good faith and believed to be correct at the time of printing but they don't form part of an offer or contract. No Winkworth employee has authority to make or give any representation or warranty in relation to this property. All fixtures and fittings, whether fitted or not are deemed removable by the vendor unless stated otherwise and room sizes are measured between internal wall surfaces, including furnishings.