



NOVELLO STREET, SW6 £5,500 PER MONTH UNFURNISHED

An immaculately presented four bedroom house situated at the favoured Eel Brook end of arguably the prettiest and most sought after road in Parsons Green.

Fulham & Parsons Green | 020 7731 3388 | fulham@winkworth.co.uk

Tenant Fees Apply: Details of fees for tenant referencing, tenancy agreement admin fees and renewal fees are available on the Winkworth website and the link can be found with the displayed rent for the property. Tenants should ensure they are fully conversant with these upfront fees and other costs that are involved at the outset of the tenancy before making an offer to rent and your local Winkworth office will provide written details upon request.

winkworth.co.uk

Winkworth

for every step...



This charming Victorian terraced house on Novello Street offers a wonderful blend of period character and contemporary comfort. Arranged over three floors and extending to over 1,520 sq. ft, the property provides generous family living space, four double bedrooms, and a sunny private garden.

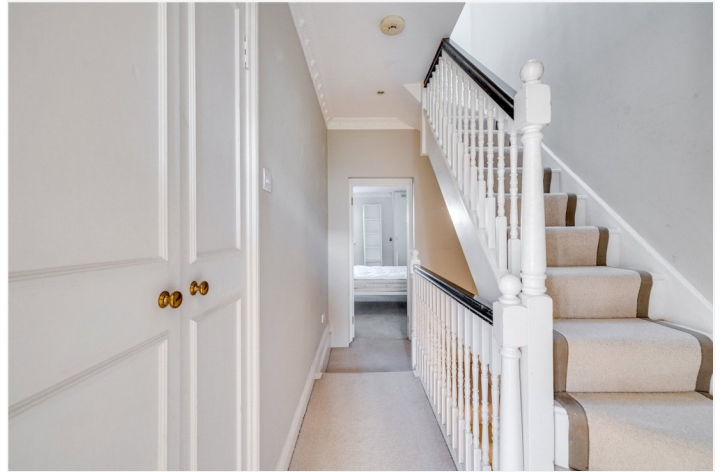
The ground floor is bright and inviting, featuring a spacious double reception room with wooden flooring, bespoke cabinetry, and an attractive fireplace with a wood burning stove. Natural light floods through the bay window at the front and French doors at the rear, which open onto a secluded garden – perfect for entertaining or quiet relaxation. The rear of the house is home to a stylish kitchen fitted with shaker-style cabinets, a farmhouse sink, AGA, and wooden countertops. It has been thoughtfully designed to maximise both storage and workspace, with direct access to the garden making it ideal for al fresco dining.

Upstairs, the first floor comprises the master bedroom, with a dressing area, and a large family bathroom, beautifully finished with twin basins, modern fittings, and a walk-in shower. There is a second double bedroom on this floor with an ensuite shower-room. The second floor continues the sense of space with a further two double bedrooms and an additional bathroom with a utility space. Each bedroom benefits from ample fitted storage, while the property's high ceilings and large sash windows ensure an airy and light-filled atmosphere throughout.

Novello Street is an iconic location used by photographers and film crews alike and is further sought after due to the easy walk through to Fulham Broadway and the catchment of Holy Cross school which occupies part of the south side of the street. Both Parsons Green and Fulham Broadway underground stations are very close by and the many bars, cafes and restaurants of Parsons Green and New Kings Rd are within a five minute walk.

This is a rare opportunity to let a substantial family home in a highly desirable location, offering both character and comfort in equal measure.



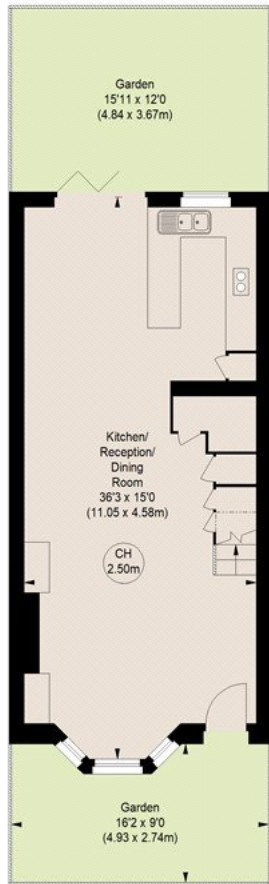


NOVELLO STREET, SW6

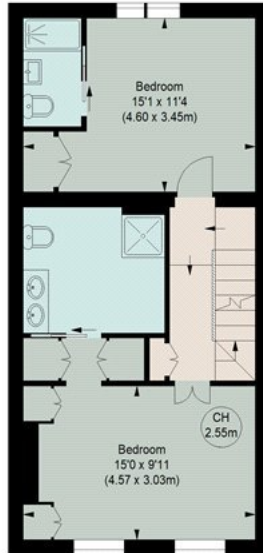
Approximate gross internal area
1520 sq ft / 141.21 sq m



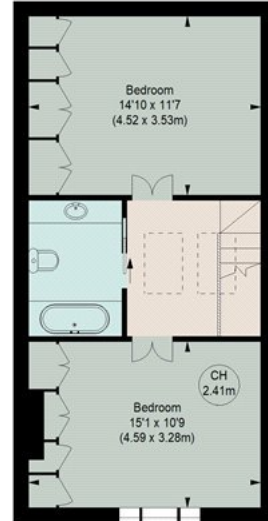
Key :
CH - Ceiling Height



GROUND FLOOR
(48.78 m²)



FIRST FLOOR
(47.61 m²)



SECOND FLOOR
(44.85 m²)

The floor plan is not to scale and measurements and areas shown are approximate and therefore should be used for illustrative purposes only.
The plan has been prepared in accordance with the RICS code of Measuring Practice and whilst we have confidence in the information produced, it must not be relied on.
If there is any aspect of particular importance, you should carry out or commission your own inspection of the property.

This floorplan is for illustration purposes only and is not to scale. The position and size of doors, windows, appliances and other features are approximate.

Fulham & Parsons Green | 020 7731 3388 | fulham@winkworth.co.uk

Winkworth

for every step...

winkworth.co.uk

Winkworth wishes to inform prospective buyers and tenants that these particulars are a guide and act as information only. All our details are given in good faith and believed to be correct at the time of printing but they don't form part of an offer or contract. No Winkworth employee has authority to make or give any representation or warranty in relation to this property. All fixtures and fittings, whether fitted or not are deemed removable by the vendor unless stated otherwise and room sizes are measured between internal wall surfaces, including furnishings.