

**DURHAM TERRACE, W2**  
**£1,850 PER WEEK (£8,016.66 PCM) FURNISHED**

**AN IMMACULATE AND BEAUTIFULLY PRESENTED AND FURNISHED TWO BEDROOM TWO BATHROOM MAISONETTE ON THE TOP FLOOR OF THIS IMPRESSIVE PERIOD BUILDING WITH FANTASTIC LIGHT THROUGHOUT.**

Notting Hill Lettings | 0207 727 3227 | nottinghill@winkworth.co.uk

**Winkworth**

for every step...

[winkworth.co.uk](http://winkworth.co.uk)





### DESCRIPTION:

This property comprises entrance on the second floor leading up to a fabulous open plan fully fitted kitchen and living room with beautiful wooden floors and fantastic entertaining space. Stairs then lead up to the top floor with master bedroom with ensuite shower room and second double bedroom with family bathroom. The property has been refurbished throughout to the highest of standards and viewings are highly recommended. The property is offered for short let between 3 to 6 months. Bills included.

### LOCATION:

Durham Terrace is an imposing, attractive and peaceful street running between Alexander Street and Westbourne Gardens, just to the east of Porchester Road and within easy walking distance of the many shops and transport links of Queensway and Westbourne Grove as well as Paddington Station.

### Utilities:

Electricity – Mains

Water – Mains

Sewerage – Mains

Heating – Gas

Broadband <https://checker.ofcom.org.uk/en-gb/broadband-coverage>

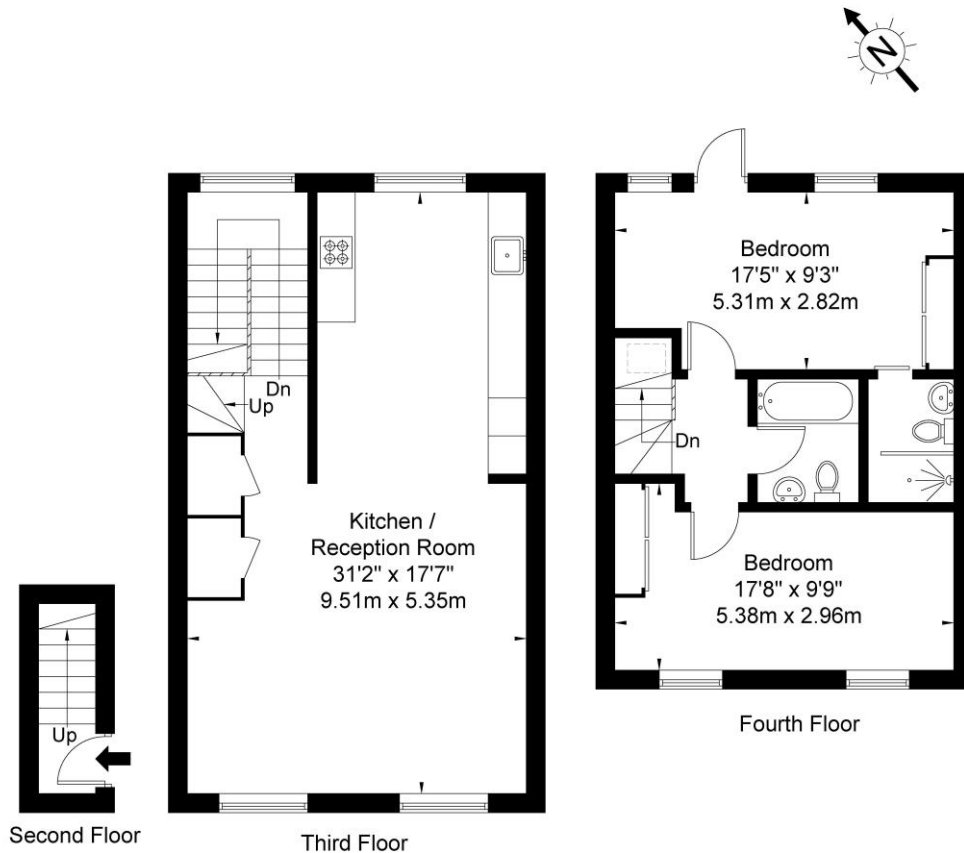
Mobile Coverage <https://checker.ofcom.org.uk/en-gb/mobile-coverage>





# Durham Terrace, W2 5PB

Approx Gross Internal Area = 93.9 sq m / 1010 sq ft

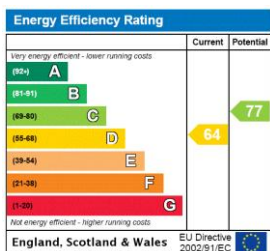


Ref

Copyright **BLEUPLAN**

The Floor plan is not to scale and measurements and areas shown are approximate and therefore should be used for illustrative purposes only. The plan has been prepared in accordance with the RICS code of Measuring Practice and whilst we have confidence in the information produced it must not be relied on. If there is any aspect of particular importance, you should carry out or commission your own inspection of the property.  
Copyright @ BLEUPLAN

This floorplan is for illustration purposes only and is not to scale. The position and size of doors, windows, appliances and other features are approximate.



Deposit: £11,100

Holding Deposit: £1,850

Council Tax Band: F (Westminster)

Where no figures are shown, we have been unable to ascertain the information. All figures that are shown were correct at the time of printing.

**Winkworth**

Notting Hill Lettings | 0207 727 3227 | nottinghill@winkworth.co.uk

for every step...

[winkworth.co.uk](http://winkworth.co.uk)

Winkworth wishes to inform prospective buyers and tenants that these particulars are a guide and act as information only. All our details are given in good faith and believed to be correct at the time of printing but they don't form part of an offer or contract. No Winkworth employee has authority to make or give any representation or warranty in relation to this property. All fixtures and fittings, whether fitted or not are deemed removable by the vendor unless stated otherwise and room sizes are measured between internal wall surfaces, including furnishings.