



INGLEMERE ROAD, LONDON, SE23
£500,000- £525,000 FREEHOLD

Forest Hill | | foresthill@winkworth.co.uk



DESCRIPTION:

GUIDE PRICE - £500,000 - £525,000. This charming 3-bedroom home is ideally located in SE23, just 0.4 miles from Forest Hill Station, offering quick access to central London.

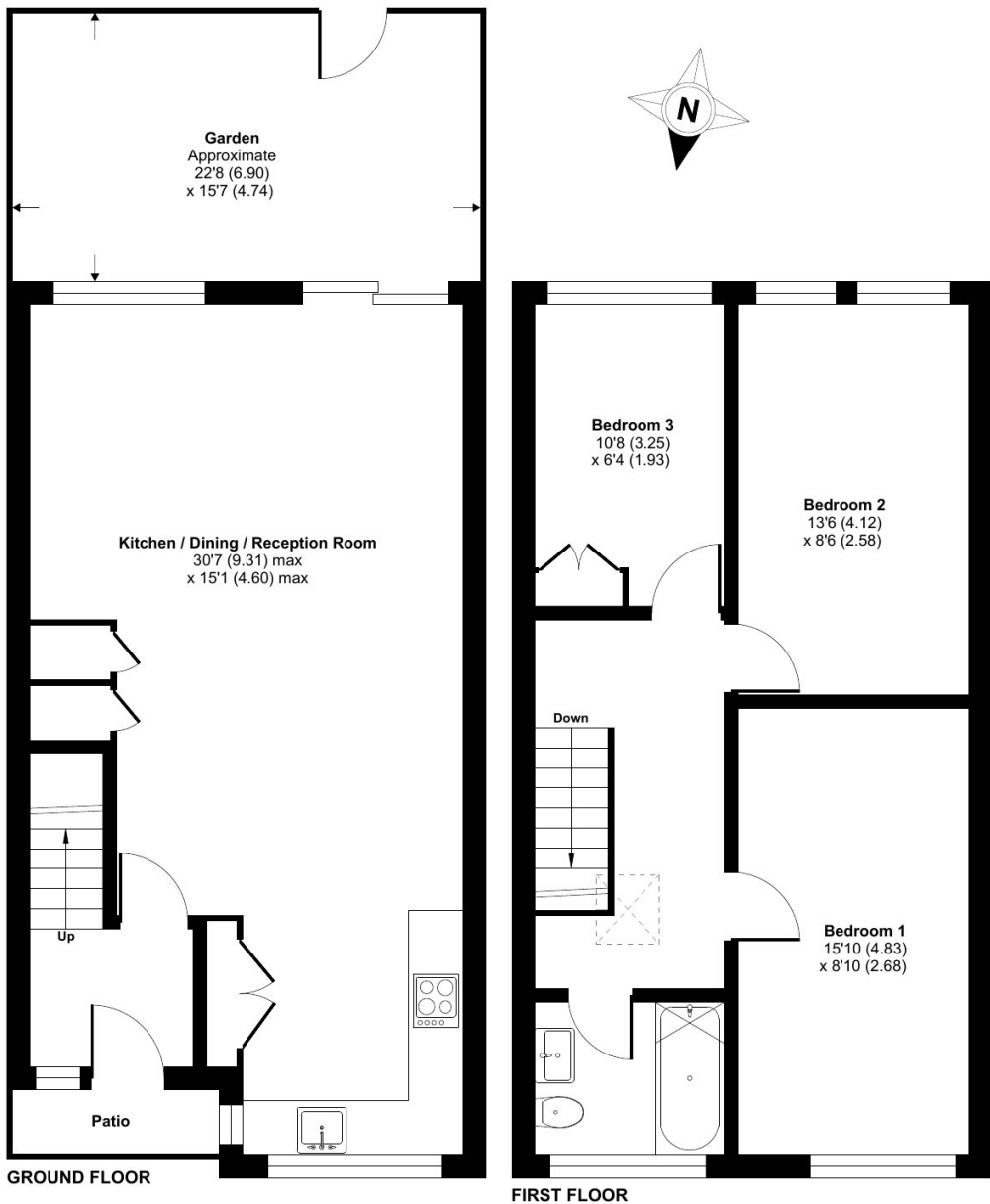




Inglemere Road, London, SE2

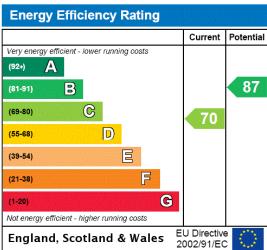
Approximate Area = 928 sq ft / 86.2 sq m

For identification only - Not to scale



Floor plan produced in accordance with RICS Property Measurement Standards incorporating International Property Measurement Standards (IPMS2 Residential). © nlcocom 2025. Produced for Winkworth Forest Hill and New Cross. REF: 1264695

This floorplan is for illustration purposes only and is not to scale. The position and size of doors, windows, appliances and other features are approximate.



Tenure: Freehold