



BLENDON TERRACE, PLUMSTEAD, LONDON, SE18
GUIDE PRICE £325,000-£350,000 SHARE OF FREEHOLD

A LARGE TWO BEDROOM SPLIT LEVEL CONVERSION FLAT THAT MEASURES CIRCA 982 SQ FT, THAT IS PART OF THIS PRETTY VICTORIAN HOUSE, LOCATED JUST MOMENTS FROM PLUMSTEAD COMMON AND LOCAL SHOPS.

Greenwich | 02030533033 | greenwich@winkworth.co.uk

Winkworth

winkworth.co.uk

See things differently



DESCRIPTION:

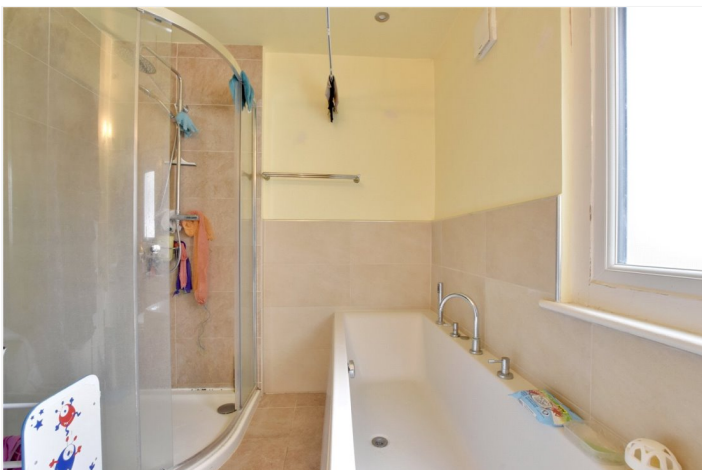
Guide Price £325,000-£350,000 A large two bedroom split level conversion flat that measures circa 982 sq ft, that is part of this pretty Victorian house, located just moments from Plumstead Common and local shops.

Whilst the property is in reasonable condition it is worth mentioning that it would certainly benefit from an update. The property is on the first and second floor and briefly comprises of a good size 17ft reception room with a lovely bay window. On the first floor there is also a 12ft kitchen breakfast room, a double bedroom and a family bathroom. The second floor has the master bedroom and plenty of storage.

Blendon Terrace is a pretty street just off Plumstead Common Road. As mentioned is only a few moments from the Common but also just seconds from local shops Plumstead and Woolwich stations are close by. There is NO CHAIN.

AT A GLANCE

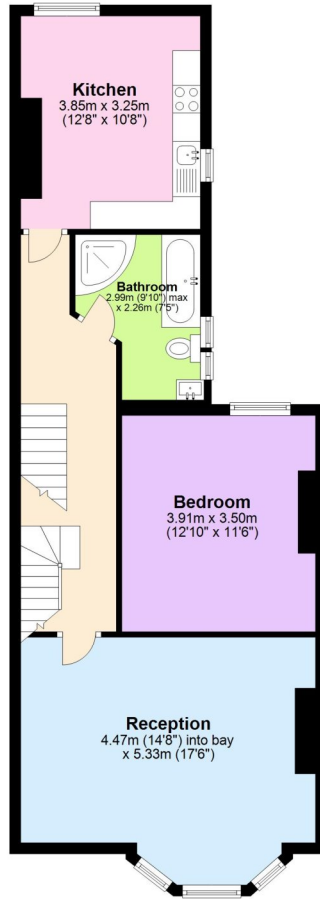
- large two bedroom flat
- Victorian conversion
- split level
- first and second floors
- requires updating
- circa 982 sq ft
- quiet road
- moments from Plumstead common
- very close to local shops





First Floor

Approx. 65.9 sq. metres (709.2 sq. feet)



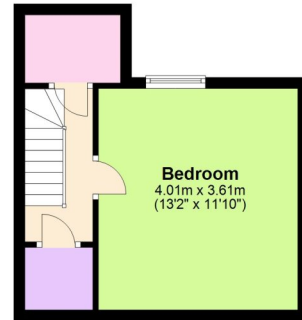
Ground Floor

Approx. 3.3 sq. metres (35.7 sq. feet)



Second Floor

Approx. 22.1 sq. metres (237.6 sq. feet)



Total area: approx. 91.3 sq. metres (982.6 sq. feet)

This floorplan is for illustration purposes only and is not to scale. The position and size of doors, windows, appliances and other features are approximate.

Greenwich | 02030533033 | greenwich@winkworth.co.uk

Winkworth

winkworth.co.uk

See things differently

Winkworth wishes to inform prospective buyers and tenants that these particulars are a guide and act as information only. All our details are given in good faith and believed to be correct at the time of printing but they don't form part of an offer or contract. No Winkworth employee has authority to make or give any representation or warranty in relation to this property. All fixtures and fittings, whether fitted or not are deemed removable by the vendor unless stated otherwise and room sizes are measured between internal wall surfaces, including furnishings.