



ROSSINGTON AVENUE, WD6
£425,000 FREEHOLD

END OF TERRACE THREE BEDROOM HOUSE

Borehamwood | 020 8953 8899 | borehamwood@winkworth.co.uk



DESCRIPTION:

This Scotchwood constructed end of terrace house sits on the outskirts of Borehamwood town centre. Accommodation comprises three bedrooms, through lounge, kitchen, a family bathroom, outside there is a patio area and rear garden mainly laid to lawn. Benefits include off street parking, entrance porch and double glazing.

Rossington Avenue is located on the Borehamwood town borders but still provides access to the many shops, cafes and restaurants that The Boulevard and Shenley Road have to offer. There are also excellent transport links into Central London from Elstree & Borehamwood train station.

AT A GLANCE

- 3 Bedrooms
- Kitchen
- Through Lounge
- Bathroom
- Guest Wc
- Off Street Parking





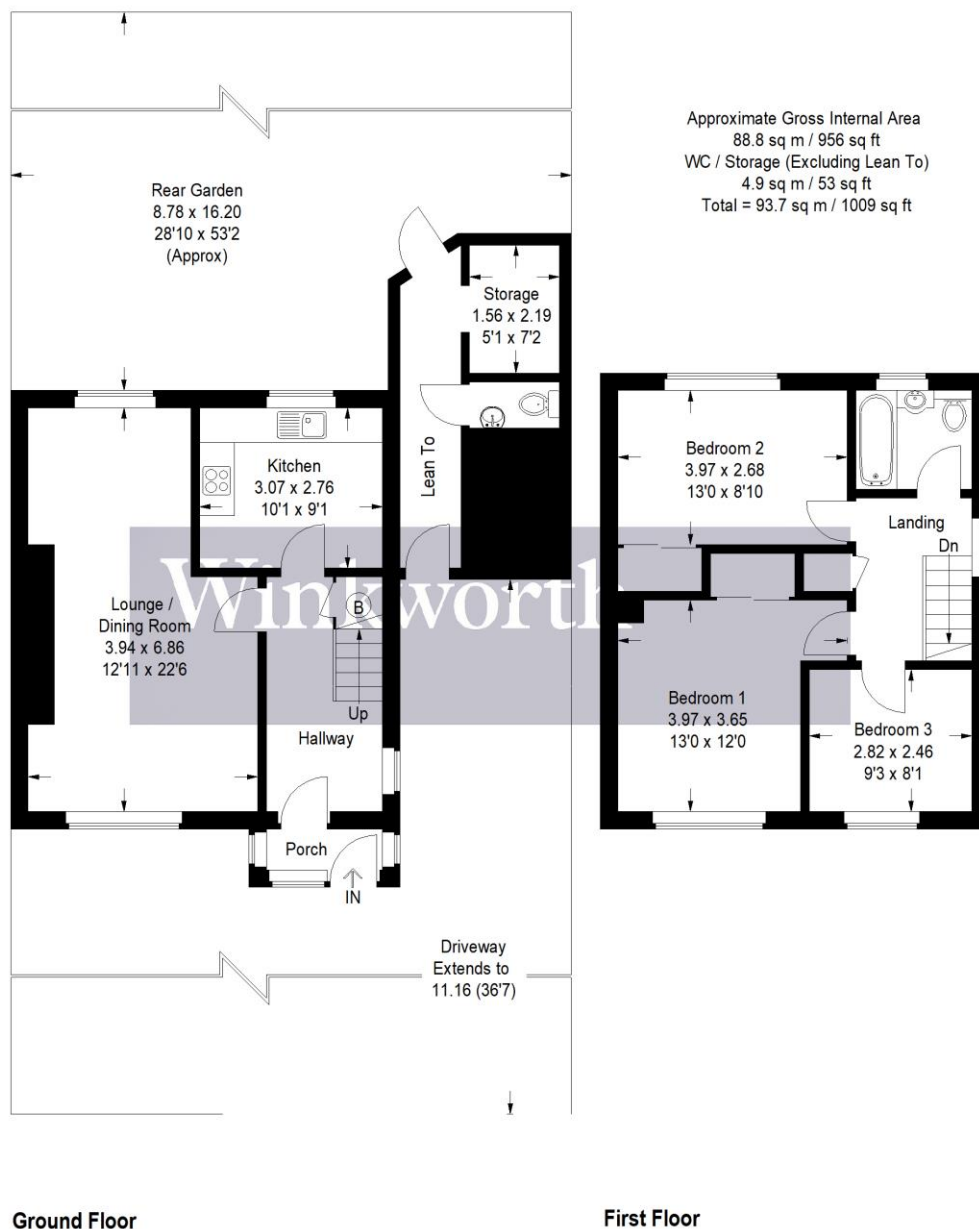


Illustration for identification purposes only, measurements are approximate, not to scale. Winkworth © 2021 (ID770628)

This floorplan is for illustration purposes only and is not to scale. The position and size of doors, windows, appliances and other features are approximate.

