



ALDRIDGE ROAD VILLAS, W11
£595 PER WEEK (£2,578.33 PCM) FURNISHED

A STUNNING AND VERY BRIGHT TWO BEDROOM (ONE DOUBLE ONE SINGLE) FLAT ON THE TOP FLOOR OF THIS PERIOD BUILDING WITH WHITE WOOD FLOORS THROUGHOUT.

Notting Hill Lettings | 0207 727 3227 | nottinghill@winkworth.co.uk

Winkworth

for every step...

winkworth.co.uk



DESCRIPTION:

A stunning and very bright two-bedroom (one double one single) flat on the top floor of this period building with white wood floors throughout, lovely living room, separate kitchen, shower room, large double bedroom and second bedroom/study. Available part furnished and viewings are highly recommended.

Utilities:

Electricity – Mains

Water – Mains

Sewerage – Mains

Heating – Gas

Broadband <https://checker.ofcom.org.uk/en-gb/broadband-coverage>

Mobile Coverage <https://checker.ofcom.org.uk/en-gb/mobile-coverage>

LOCATION:

Aldridge Road Villas is a peaceful, tree lined, residential street running north from Westbourne Park Road, a short walk from the shops and restaurants of Ledbury Road. Westbourne Park underground is just around the corner and Notting Hill Gate within easy walking distance.



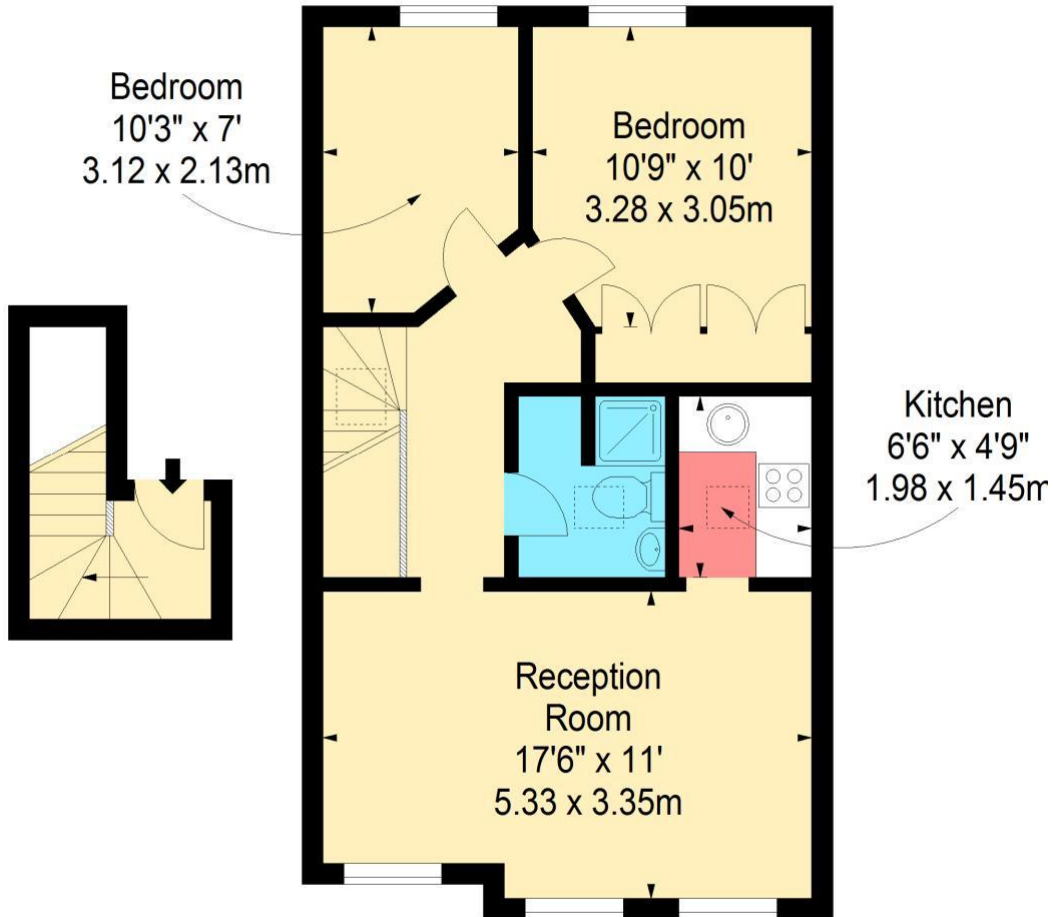
ALDRIDGE ROAD VILLAS, W11

Approx. Gross Internal Area *

572 Ft² - 53.14 M²

Illustration For Identification Purposes Only. Not to Scale

* As Defined by RICS - Code of Measuring Practice



SECOND FLOOR
ENTRANCE

THIRD FLOOR

BKR

www.bkrfloorplans.co.uk
T: 0845 257 2023
© BKR 2010

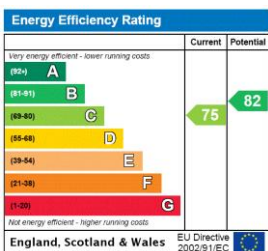
This floorplan is for illustration purposes only and is not to scale. The position and size of doors, windows, appliances and other features are approximate.

Deposit: £2,975

Holding Deposit: £595

Council Tax Band: D (Westminster)

Where no figures are shown, we have been unable to ascertain the information. All figures that are shown were correct at the time of printing.



Notting Hill Lettings | 0207 727 3227 | nottinghill@winkworth.co.uk

Winkworth

for every step...

winkworth.co.uk

Winkworth wishes to inform prospective buyers and tenants that these particulars are a guide and act as information only. All our details are given in good faith and believed to be correct at the time of printing but they don't form part of an offer or contract. No Winkworth employee has authority to make or give any representation or warranty in relation to this property. All fixtures and fittings, whether fitted or not are deemed removable by the vendor unless stated otherwise and room sizes are measured between internal wall surfaces, including furnishings.