



**COLEMAN COURT, LONDON, SW18**  
**£1,250 PER MONTH UNFURNISHED**

## **A BRILLIANT ONE BEDROOM FLAT SITUATED ON THE TOP FLOOR COLEMAN COURT, KIMBER ROAD**

Southfields | 020 8877 1000 | southfields@winkworth.co.uk

**Winkworth**

for every step...

*winkworth.co.uk*



### **DESCRIPTION:**

This wonderfully bright and recently re-decorated one bedroom flat is situated on the top floor of the building with far reaching views of the communal gardens and King George's Park beyond.

Benefitting from double glazing throughout the property comprises a newly refurbished kitchen, light and airy reception room with large windows, master bedroom with fitted wardrobes and modern bathroom with large shower.

Coleman Court is on Kimber Road conveniently located next to the green open spaces of King George's Park. Southfields Underground and Earlsfield Overground stations and the amenities of Garratt Lane and Merton Road are all a short walk away.

### **ACCOMMODATION**

Long Let, 1 Bedroom, 1 Reception Room, 1 Bathroom, Flat/Apartment, Upper Floor without Lift, Communal Gardens, Residents Parking, Purpose Built, Unfurnished, 380 Approx Sq Ft





# Coleman Court

Approximate Gross Internal Area = 35.3 sq m / 380 sq ft

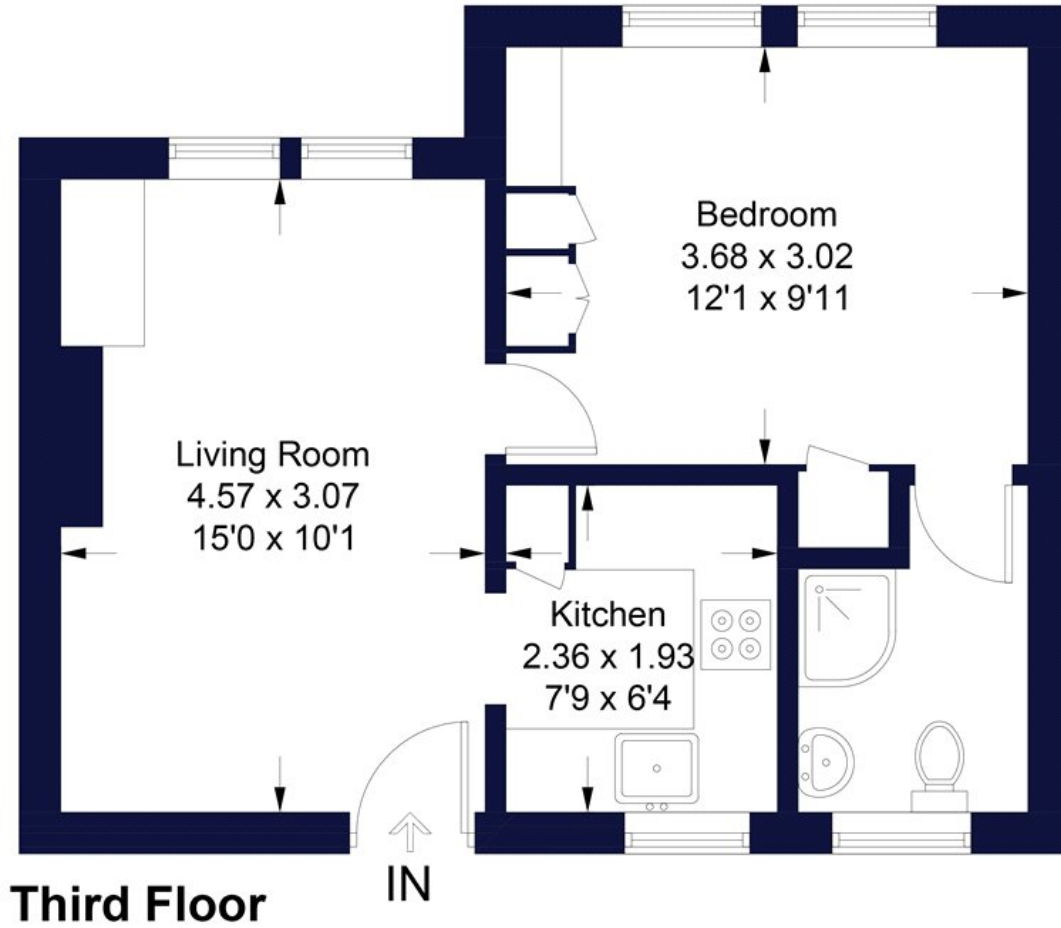


Illustration for identification purposes only, measurements are approximate, not to scale. FloorplansUsketch.com © 2020 (ID684387)

This floorplan is for illustration purposes only and is not to scale. The position and size of doors, windows, appliances and other features are approximate.

Energy Efficiency Rating		Current	Potential
Very energy efficient - lower running costs			
(92-100)	<b>A</b>		
(81-91)	<b>B</b>		
(69-80)	<b>C</b>		
(55-68)	<b>D</b>	62	65
(39-54)	<b>E</b>		
(21-38)	<b>F</b>		
(1-20)	<b>G</b>		
Not energy efficient - higher running costs			
England, Scotland & Wales		EU Directive 2002/91/EC	

Southfields | 020 8877 1000 | southfields@winkworth.co.uk



for every step...

winkworth.co.uk

Winkworth wishes to inform prospective buyers and tenants that these particulars are a guide and act as information only. All our details are given in good faith and believed to be correct at the time of printing but they don't form part of an offer or contract. No Winkworth employee has authority to make or give any representation or warranty in relation to this property. All fixtures and fittings, whether fitted or not are deemed removable by the vendor unless stated otherwise and room sizes are measured between internal wall surfaces, including furnishings.