



WOODBURN CLOSE, HENDON, LONDON, NW4
£335,000 LEASEHOLD APPROX 173 YEARS REMAINING

CHARMING ONE BEDROOM GROUND FLOOR APARTMENT JUST OFF BRENT STREET

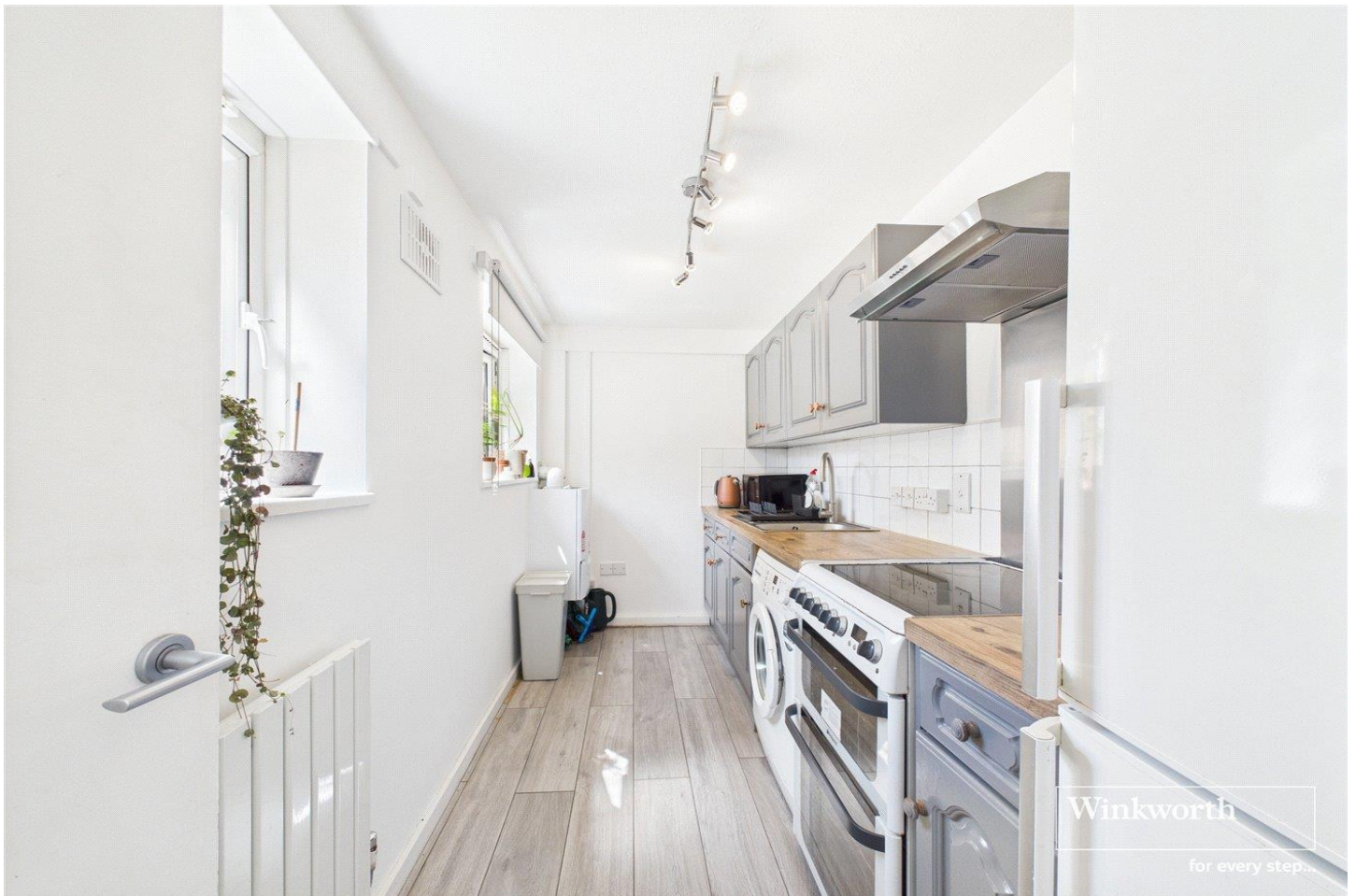
- SERVICE CHARGE APPROX £1,369 PER ANNUM
- GROUND RENT APPROX £10 PER ANNUM

Kingsbury | 020 8204 0000 | kingsbury@winkworth.co.uk

Winkworth

for every step...

winkworth.co.uk

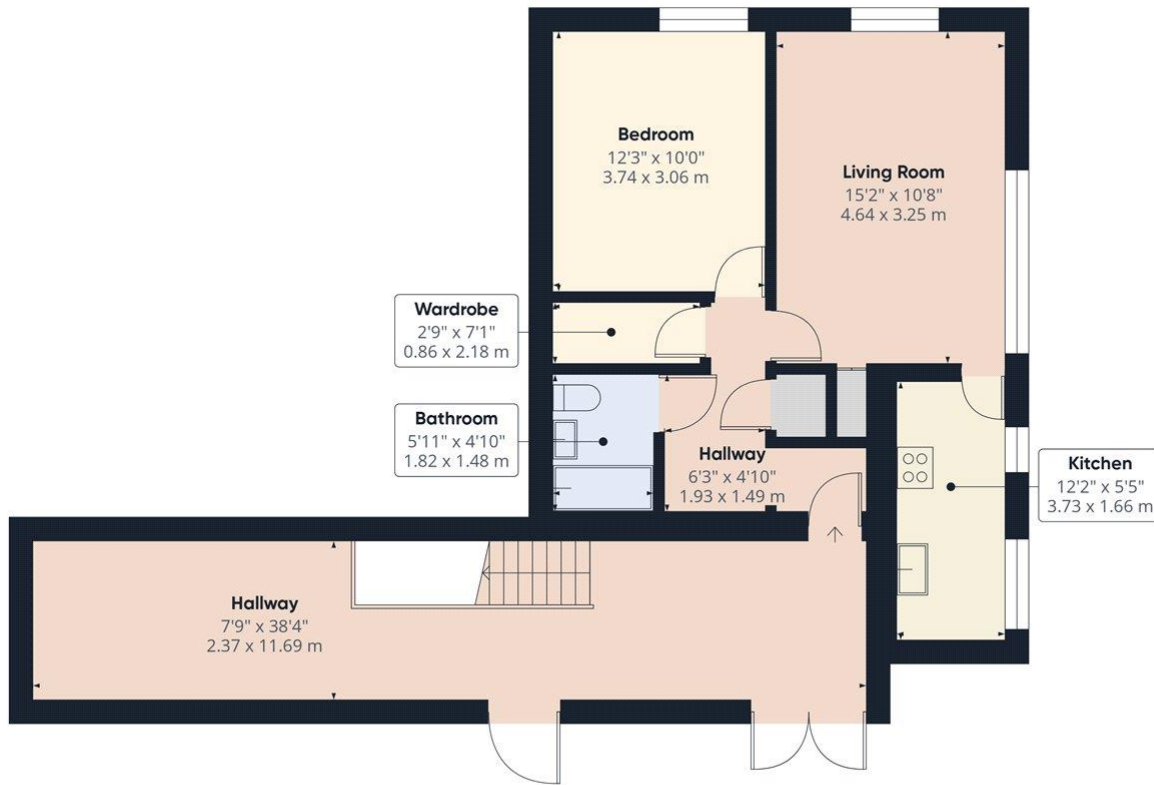


A charming one-bedroom ground floor apartment, ideally situated just off Brent Street within a popular purpose-built development. The property boasts a spacious and naturally bright lounge, a functional and well-laid-out kitchen, a generous double bedroom, and a modern, well-appointed bathroom. Perfectly located for commuters, the apartment offers excellent transport links with Hendon Central and Brent Cross stations (Northern Line) nearby. Residents can also enjoy the wide array of local shops, cafés, and amenities on Brent Street and Golders Green Road. Additional benefits include shared residents' parking, making this an ideal choice for a starter home or for investors seeking convenience and comfort in a well-connected area.



Winkworth

for every step...



Approximate total area⁽¹⁾
777 ft²
72.2 m²

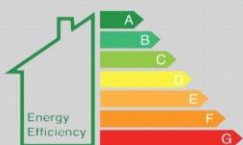
(1) Excluding balconies and terraces

Calculations reference the RICS IPMS 3C standard. Measurements are approximate and not to scale. This floor plan is intended for illustration only.

GIRAFFE360

This floorplan is for illustration purposes only and is not to scale. The position and size of doors, windows, appliances and other features are approximate.

EPC rating coming soon



Tenure: Leasehold

Term: Approx 173 years

Service Charge: £1,369 approx. per annum

Ground Rent: £10 approx per annum

Council Tax Band: B - Barnet

All figures that are shown were correct at the time of printing.

Kingsbury | 020 8204 0000 | kingsbury@winkworth.co.uk

Winkworth

for every step...

winkworth.co.uk

Winkworth wishes to inform prospective buyers and tenants that these particulars are a guide and act as information only. All our details are given in good faith and believed to be correct at the time of printing but they don't form part of an offer or contract. No Winkworth employee has authority to make or give any representation or warranty in relation to this property. All fixtures and fittings, whether fitted or not are deemed removable by the vendor unless stated otherwise and room sizes are measured between internal wall surfaces, including furnishings.