



BRYAN AVENUE, NW10
£346.15 PER WEEK FURNISHED

**PRESENTING THIS SPACIOUS TWO
DOUBLE BEDROOM GROUND FLOOR
MAISONETTE TO THE LETTINGS
MARKET.**

Kensal & Queens Park | 0208 960 4947 |
kensalrise@winkworth.co.uk

Winkworth

winkworth.co.uk

See things differently



DESCRIPTION:

New to the lettings market this first floor maisonette comprises of two spacious double bedrooms, a large reception that leads on to a shared garden, separate modern kitchen and fully fitted bathroom.

Offered furnished and available in September 2019

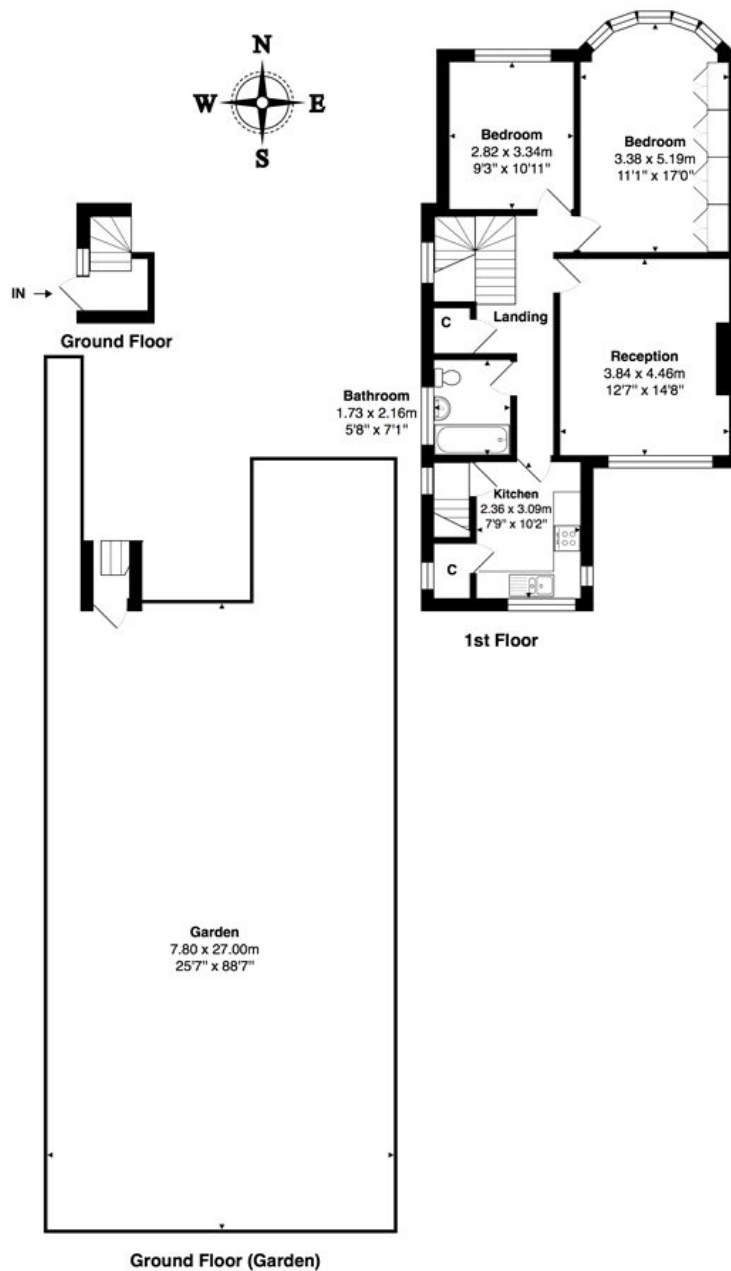
Council tax - £1357.94 per year (Band D)

Ward - Brondesbury Park

AT A GLANCE







Total Area: 75.1 m² ... 808 ft² (excluding garden)
All measurements are approximate and for display purposes only

This floorplan is for illustration purposes only and is not to scale. The position and size of doors, windows, appliances and other features are approximate.

Kensal & Queens Park | 0208 960 4947 | kensalrise@winkworth.co.uk



winkworth.co.u

See things differently

winkworth wishes to inform prospective buyers and tenants that these particulars are a guide and act as information only. All our details are given in good faith and believed to be correct at the time of printing but they don't form part of an offer or contract. No winkworth employee has authority to make or give any representation or warranty in relation to this property. All fixtures and fittings, whether fitted or not are deemed removable by the vendor unless stated otherwise and room sizes are measured between internal wall surfaces, including furnishings.