



WOODSEER STREET, LONDON, E1  
**£650,000 LEASEHOLD**

## LARGE TWO DOUBLE BEDROOM TWO BATHROOM APARTMENT WITH PRIVATE OUTSIDE SPACE

Shoreditch | 020 7749 7650 | [shoreditch@winkworth.co.uk](mailto:shoreditch@winkworth.co.uk)

**Winkworth**

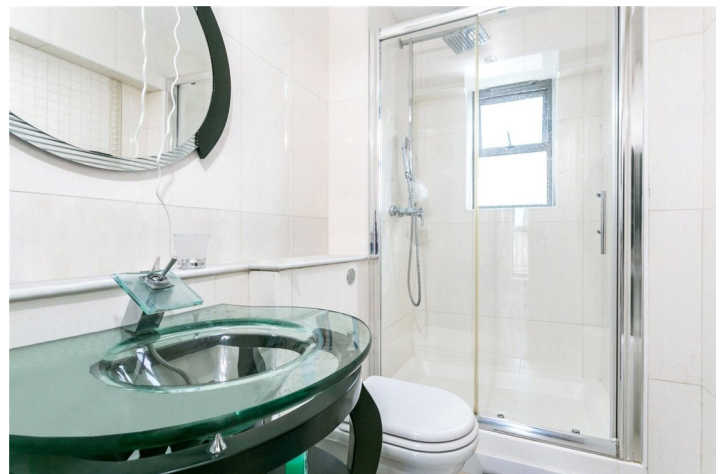
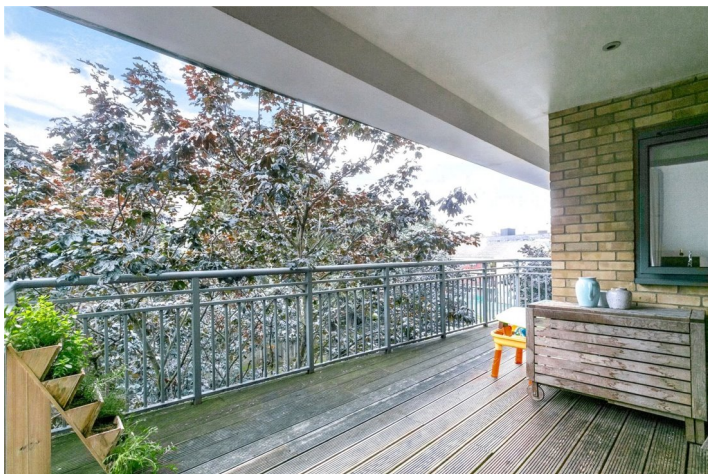


## DESCRIPTION:

Being offered chain free is this large two double bedroom, two-bathroom apartment available just off Brick Lane with private outside space. The property boasts a modern bright semi open plan kitchen/living room, fitted kitchen with granite work tops, wood flooring throughout and lots of natural light. The property features two large double bedrooms, one with en-suite, main bathroom and plenty of storage cupboard space. The property also features a door leading to private patio area from the living room and the second bedroom.

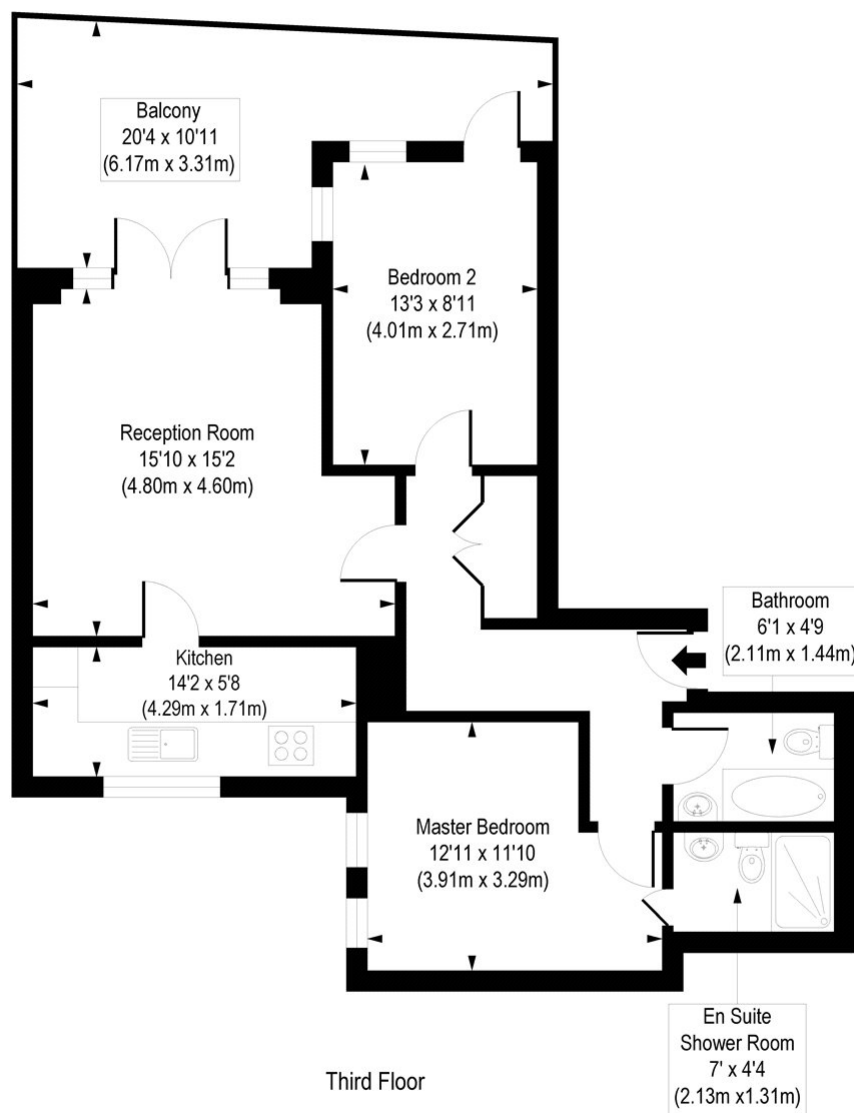
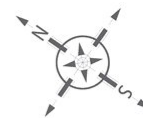
The property is in a very central location between Shoreditch, Bishopsgate, Bethnal Green and Whitechapel (Crossrail) offering easy access into the City by foot or by the variety of transports links close by. Walking distance to Shoreditch High Street Station, Bethnal Green Tube and Overground Station, Whitechapel, Aldgate East and Liverpool Street Stations. You also have a wealth of local amenities with Brick Lane, Columbia Road, Spitalfields City Farm and Spitalfields Market all within close proximity.

**Winkworth**



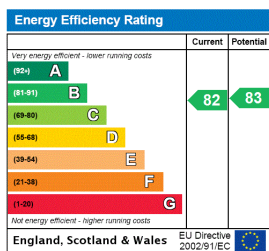
Winkworth

Woodseer Street, E1  
Approx. Gross Internal Floor Area 727 sq. ft / 67.56 sq. m



COMPLIANT WITH RICS CODE OF MEASURING PRACTICE. Floorplan is for illustrative purposes only and is not to scale. Every attempt has been made to ensure the accuracy of the floorplan shown, however all measurements, fixtures, fittings and data shown are an approximate interpretation for illustrative purposes only. Liability for errors, omissions or mis-statement through negligence or otherwise is hereby excluded.

This floorplan is for illustration purposes only and is not to scale. The position and size of doors, windows, appliances and other features are approximate.



Shoreditch | 020 7749 7650 | shoreditch@winkworth.co.uk

