



PUTNEY LODGE, LONDON, SW15

£1,700 PER MONTH UNFURNISHED

Putney | 020 8877 1000 | putney@winkworth.co.uk

Winkworth

for every step...

winkworth.co.uk



DESCRIPTION:

A very well presented apartment situated on the second floor (with lift) of this purpose build block. The property comprises of entrance hall, large reception room, separate kitchen and double bedroom. The property further benefits from a private balcony. Unfurnished.

ACCOMMODATION

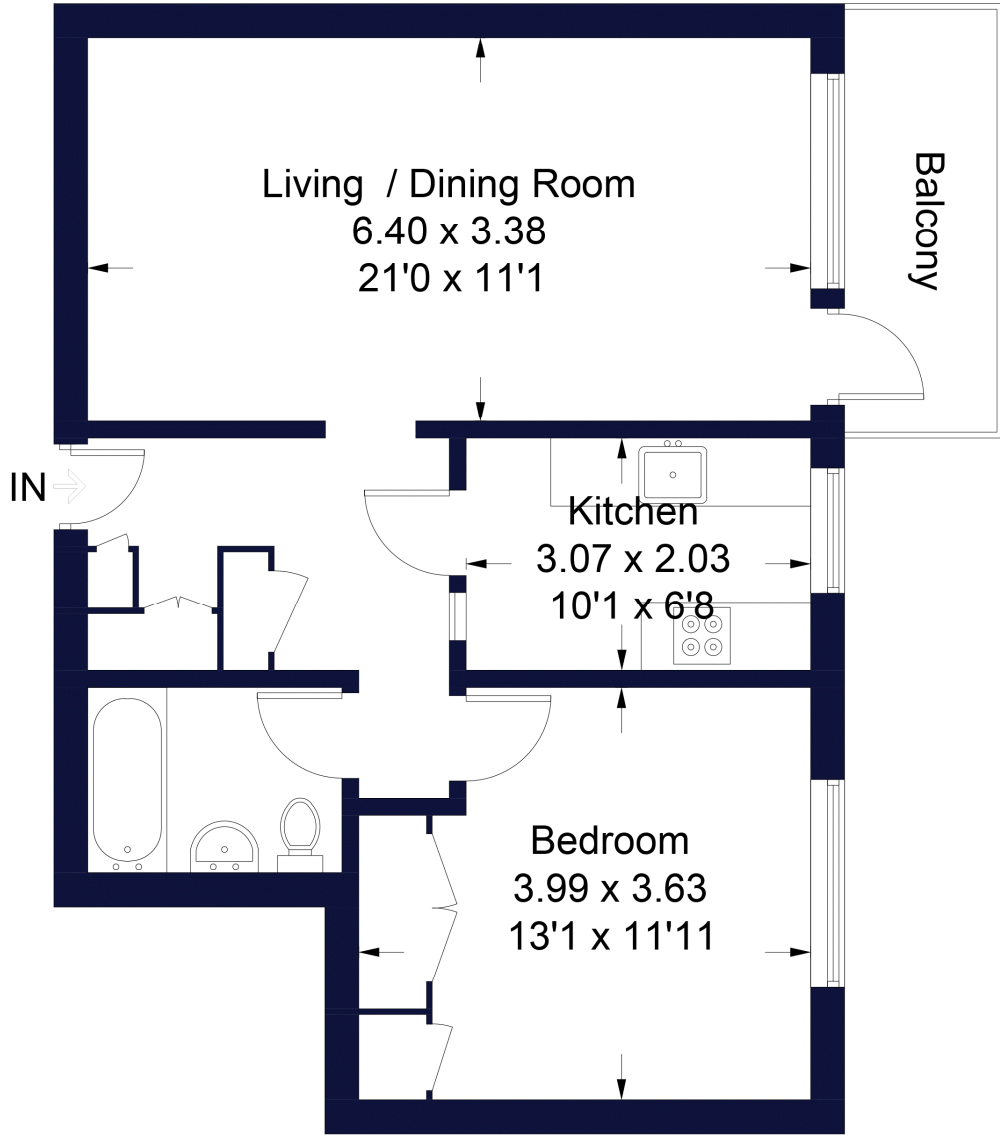
Long Let, 1 Bedrooms, 1 Reception Rooms, 1 Bathrooms, Flat/Apartment, Balcony, Residents Parking, Unfurnished, 598 Approx Sq Ft





Putney Lodge

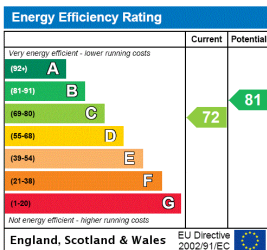
Approximate Gross Internal Area
55.6 sq m / 598 sq ft



Second Floor

Illustration for identification purposes only, measurements are approximate, not to scale. FloorplansUsketch.com © 2019 (ID542150)

This floorplan is for illustration purposes only and is not to scale. The position and size of doors, windows, appliances and other features are approximate.



Putney | 020 8877 1000 | putney@winkworth.co.uk



for every step...

winkworth.co.uk

Winkworth wishes to inform prospective buyers and tenants that these particulars are a guide and act as information only. All our details are given in good faith and believed to be correct at the time of printing but they don't form part of an offer or contract. No Winkworth employee has authority to make or give any representation or warranty in relation to this property. All fixtures and fittings, whether fitted or not are deemed removable by the vendor unless stated otherwise and room sizes are measured between internal wall surfaces, including furnishings.