



AYLESFORD STREET, SW1V

£1,350,000

FREEHOLD

At a glance...

- Exciting Refurbishment
- Two/Three Bedrooms
- c.1391 Square Feet
- Own Front Door
- Fabulous 1st Floor Reception Room
- Council Tax Band: G

Winkworth

for every step...



Score	Energy rating	Current	Potential
92+	A		
81-91	B		
69-80	C		
55-68	D		68 D
39-54	E	50 E	
21-38	F		
1-20	G		

AYLESFORD STREET, SW1V

£1,350,000

FREEHOLD

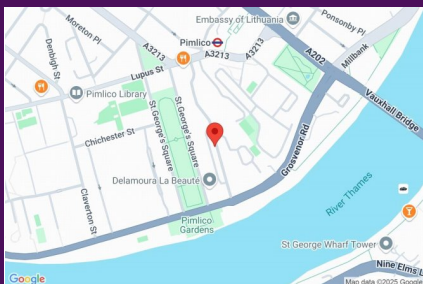
A very exciting opportunity to acquire a freehold in Pimlico comprising an upper maisonette with its own front door covering some 1391 square feet.

Offering fantastic accommodation over the ground, 1st and 2nd floors the house is in need of some refurbishment and therefore could be reconfigured and improved to suit the requirements of a new purchaser.

Currently offering 2 double bedrooms, 3rd bedroom/study, large eat-in kitchen and fabulous lateral 1st floor reception room there is great potential to make the house really special.

Located in an ideal location for Pimlico underground station and a short walk from Victoria and Vauxhall stations.

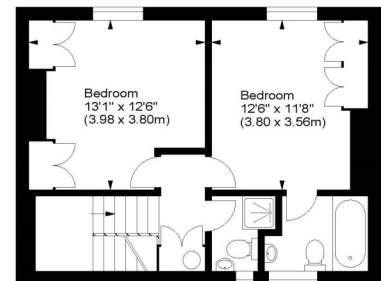
The leasehold of the basement is also included in the freehold title. Please speak to a member of the team for more details.



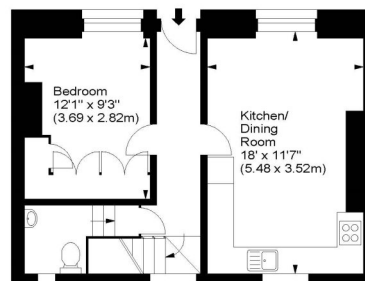
winkworth wishes to inform prospective buyers and tenants that these particulars are a guide and act as information only. All our details are given in good faith and believed to be correct at the time of printing but they don't form part of an offer or contract. No winkworth employee has authority to make or give any representation or warranty in relation to this property. All fixtures and fittings, whether fitted or not are deemed removable by the vendor unless stated otherwise and room sizes are measured between internal wall surfaces - including fireplaces.

Aylesford Street, SW1

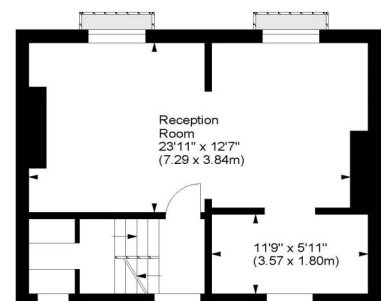
Approx. Gross Internal Area
1391 Sq Ft - 129.22 Sq M



Second Floor



Ground Floor



First Floor

For illustration purposes only. Not to scale.
All measurements are taken and shown at floor level.
www.r3photography.co.uk © Photography / Floor Plans / Lease Plans / EPCs



Pimlico & Westminster

020 7828 1786

pimlico@winkworth.co.uk

winkworth.co.uk/pimlico-westminster

Winkworth

for every step...