



Christopher  
**Batten**

in association with

Winkworth

Lake Farm, Willett Road, Ashington,  
Wimborne, Dorset, BH21 3DH

Lake Farm, Willett Road,  
Ashington, Wimborne, Dorset,  
BH21 3DH

A stunning 5 bedroom detached  
Victorian barn originally built in  
1860, providing superb family  
accommodation extending to  
just under 4,000 square feet,  
arranged over two floors.

GUIDE PRICE: £1,795,000  
FREEHOLD

Christopher  
**Batten**

in association with

Winkworth





THE BARN STANDS IN  
GARDENS, GROUNDS AND  
PADDOCKS OF 8.31 ACRES, ON

A SUPERB LEVEL SITE, LESS THAN 1  
MILE FROM WIMBORNE TOWN CENTRE.

EXCELLENT EQUESTRIAN FACILITIES

DIRECTIONS: From Pye Corner in  
Wimborne, proceed along Julians Road,  
over Julians Bridge to the Lake Gates  
roundabout at the junction with the A31.  
Take the second exit towards Corfe  
Mullen, turn left into Willett Road, and  
the property can be found on the left  
hand side.

COUNCIL TAX: Band G

EPC RATING: Band E



5



5



3

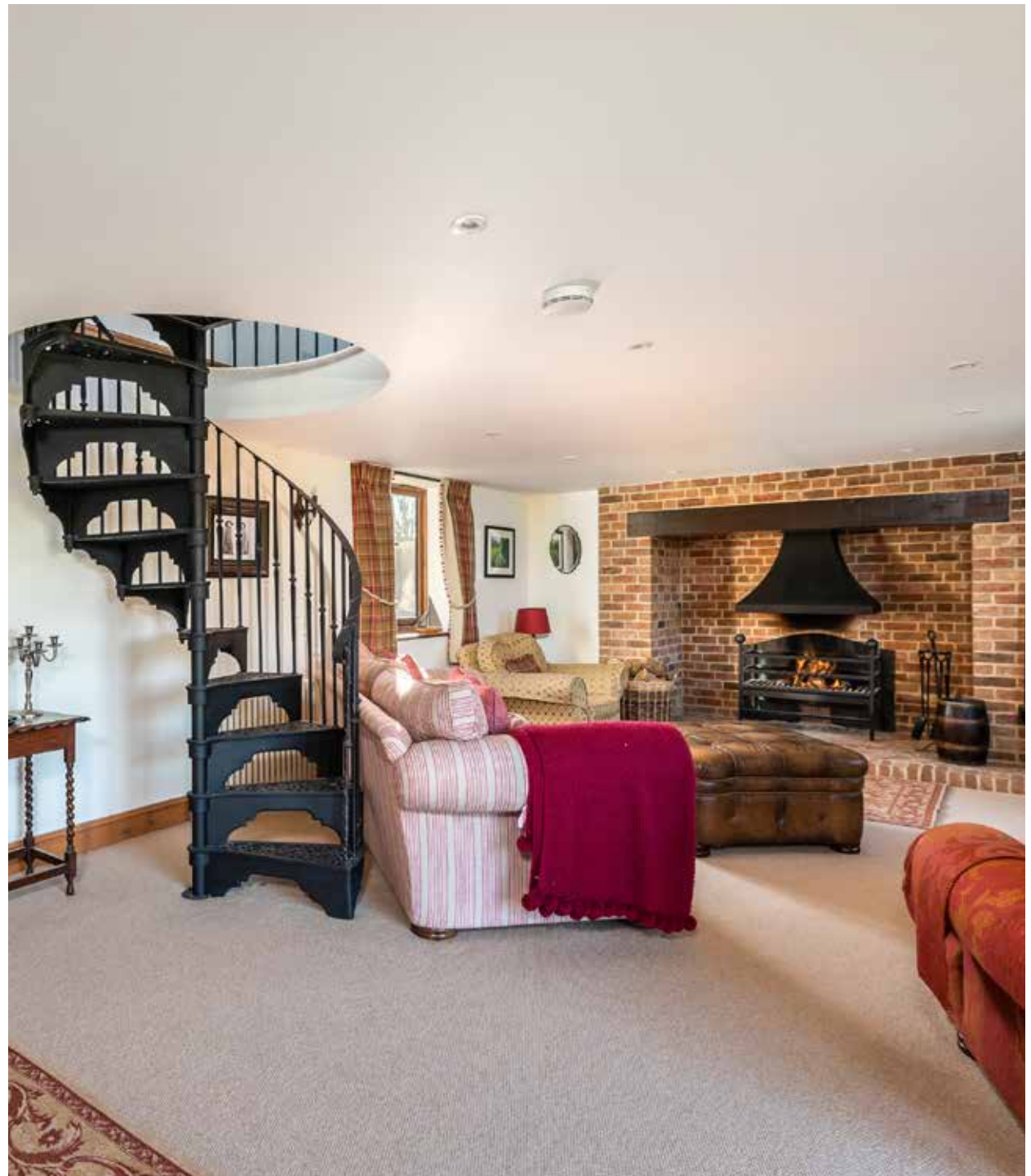
The barn was in a derelict state in the late 1990s, and in the last 20 years has been substantially refurbished, restored and extended, and is now presented in truly beautiful condition throughout.

The property stands on a large, flat site extending to over 8 acres, incorporating a range of outbuildings including a triple garage complex, a stable block with enormous potential for conversion to holiday accommodation (subject to the necessary planning consents), a large detached brick built barn, and a 5-bay agricultural barn.

There is potential for a commercial income.

The barn has many outstanding features including a stunning vaulted dining hall (with exposed A-frame timbers), a superb kitchen with range cooker, granite work surfaces, and a range of appliances, and an oak framed garden room overlooking the private garden. In addition, there are inglenook fireplaces, Victorian cylinder radiators, latched, ledged and braced internal doors, oak Indian slate and flagstone floors, 2 staircases including a spiral staircase, and quality floor coverings throughout.

The property is connected to mains electricity and water, and has private drainage, oil fired heating and quality double glazed windows and doors throughout.





A square entrance hall has flagstones, exposed beams and downlighters, built-in cupboard, and a cloakroom.

From the entrance hall, a door leads through to the superb semi-galleried dining hall with a vaulted ceiling, exposed A-frame timbers and beams, flagstones, feature exposed brick wall, full height double glazed screen overlooks the courtyard, solid oak open tread staircase to first floor, and door to the study. The study features wide oak floorboards, part exposed brick walling, ceiling timbers and downlighters, and fitted shelves.

A pair of glazed doors lead to an impressive drawing room with a full height brick inglenook fireplace (with bressummer beam, mantel, side displays, log store, herringbone brick plinth and wood burning stove), a wide oak boarded floor, casement doors to outside, and exposed ceiling timbers. Glazed doors lead to an impressive triple aspect family room with casement doors to the garden, an inglenook fireplace (with bressummer beam, fire basket, herringbone brick hearth,) and a feature spiral staircase leads to the second bedroom.

From the dining hall, glazed double doors lead to a large kitchen with an excellent range of granite work surfaces, ceramic butler's sink, an extensive range of hand-painted units, flagstones, Alpha range cooker (supplying the heating and hot





water), and walkway to an inner kitchen area with beech surfaces, matching units, ceiling timbers, exposed brick pier and space for fridge-freezer. There is a separate utility room which has flagstones, sink unit, cupboards, and door to outside. Double doors lead to a superb glazed garden room with ceramic tiled floor (with underfloor heating) and double doors to the garden.

From the dining hall, an oak staircase leads to a galleried landing with exposed A-frame timbers and beams and a superb view over the adjacent farmland. A walkway with A-frame timbers, exposed brick walling and built-in cupboards leads to bedroom 1, a dual aspect room with exposed A-frame timbers and fine views, door to bedroom 2, and an ensuite shower room with a 3-piece suite and rooflight.



Bedroom 2 has a spiral staircase leading down to the family room, an excellent range of fitted full height wardrobes, and an en suite bath/shower room comprising contemporary bath tub, quartz vanity unit with 2 inset wash hand basins, WC, walk-in shower cubicle, and quality flooring.

The family bathroom has a shower bath, vanity unit with granite worktop and inset basin, WC, and access to loft.

Bedroom 3 is a spacious double room with built-in wardrobes and exposed A-frame timbers and beams, bedroom 4 is a smaller double room overlooking the courtyard and paddocks, and bedroom 5 is a spacious

dual aspect room with a door to an external staircase.

From Willett Road, 5-bar gates lead to a large gravelled courtyard (with views towards Wimborne's famous Minster Church) has a central water feature and ample parking for caravans/horse boxes etc. The gravel drive is flanked by 5 main paddocks with good quality post-and-rail fencing throughout, inter-linked by steel 5-bar gates.

There is a 3-bay Heritage style garage with a brick plinth, down timbers, slate roof and weathervane.

The stable block is approximately 70' x 18' and of brick construction under a corrugated roof, with an outstand area enclosed by railings which lead to the courtyard, and 4 American style stables of brick and block construction with concrete floors. steel railings, electric light and power, blanket storage, tack areas, cloakroom, 2 pairs of stable doors to the courtyard and exterior water supply. From the courtyard, an arched wrought iron gate and trellising lead to 2 barns.

There is a large detached brick barn constructed of brick under a corrugated roof and tall brick chimneys. There are 3 pairs of entrance doors, and 2 areas arranged as large workshops/storage areas. The barn nearest to the house has been converted into a large, self-contained





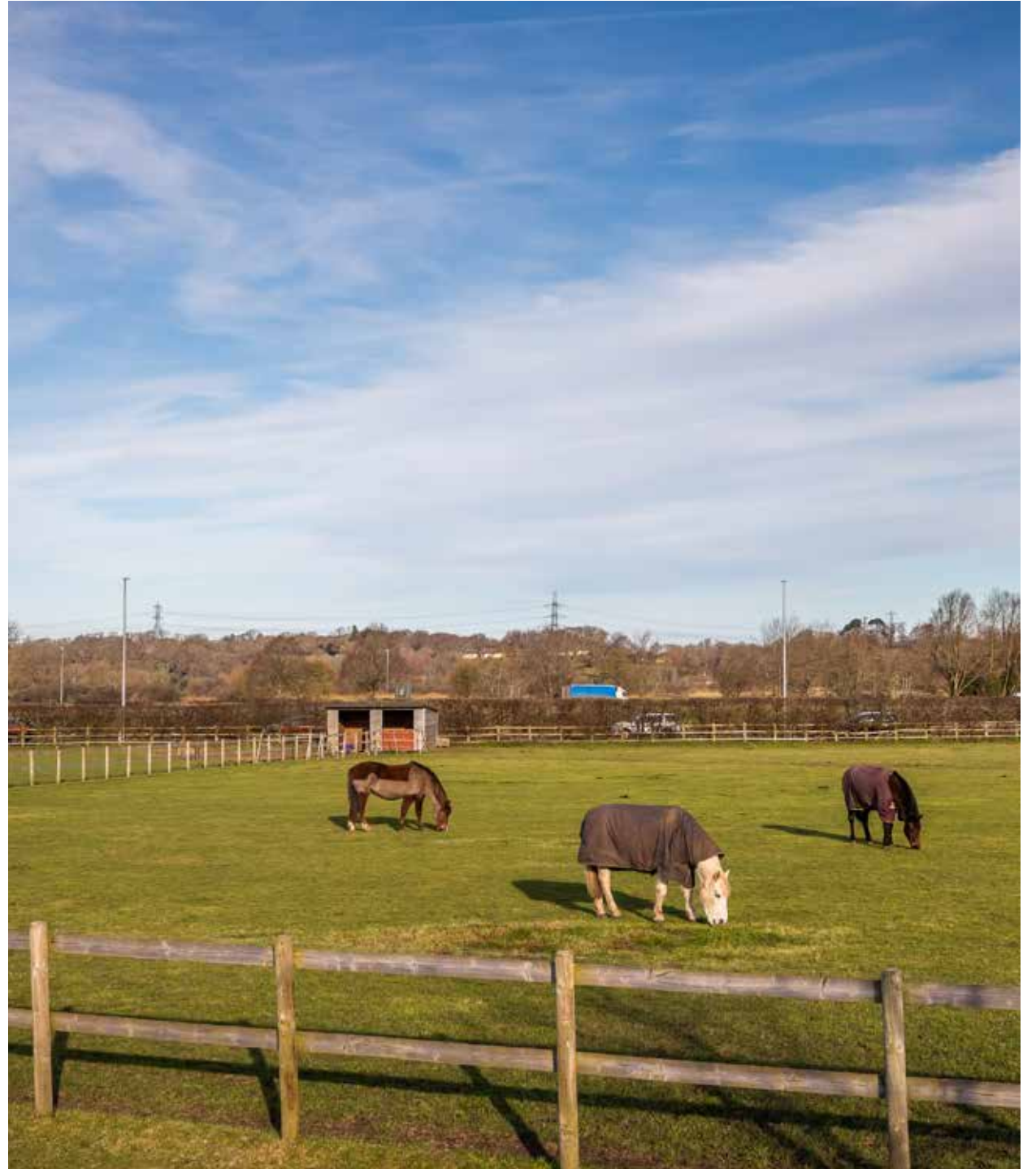


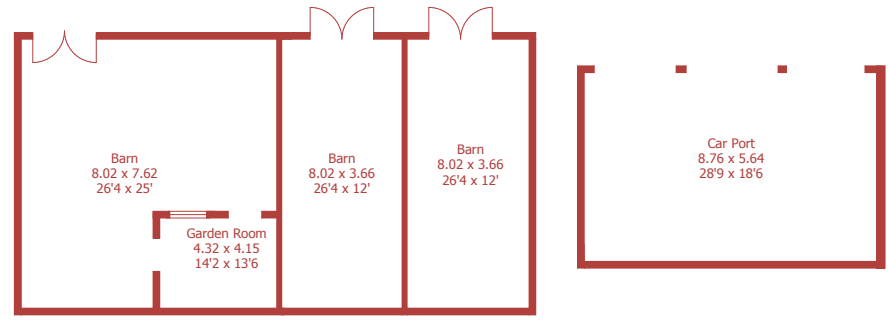
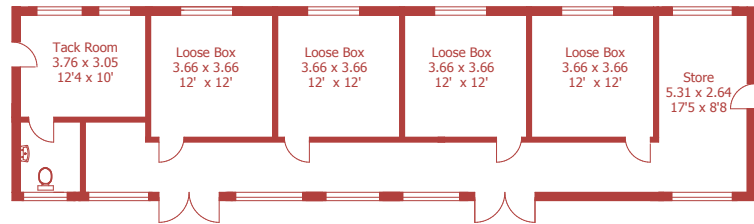
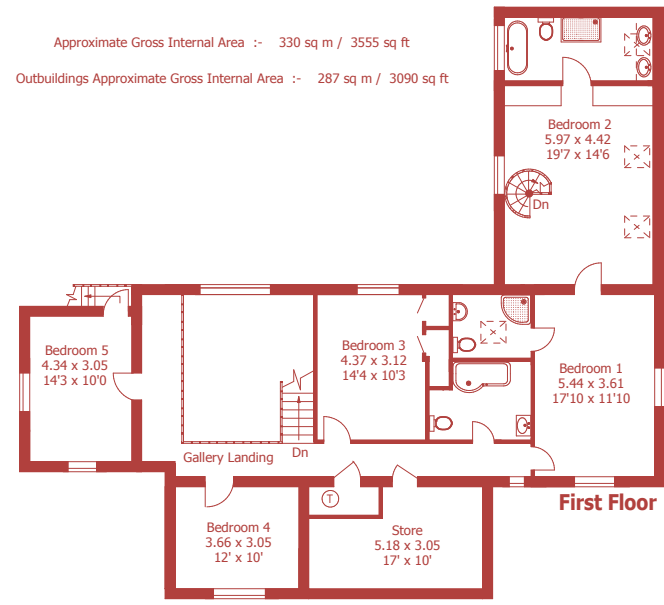
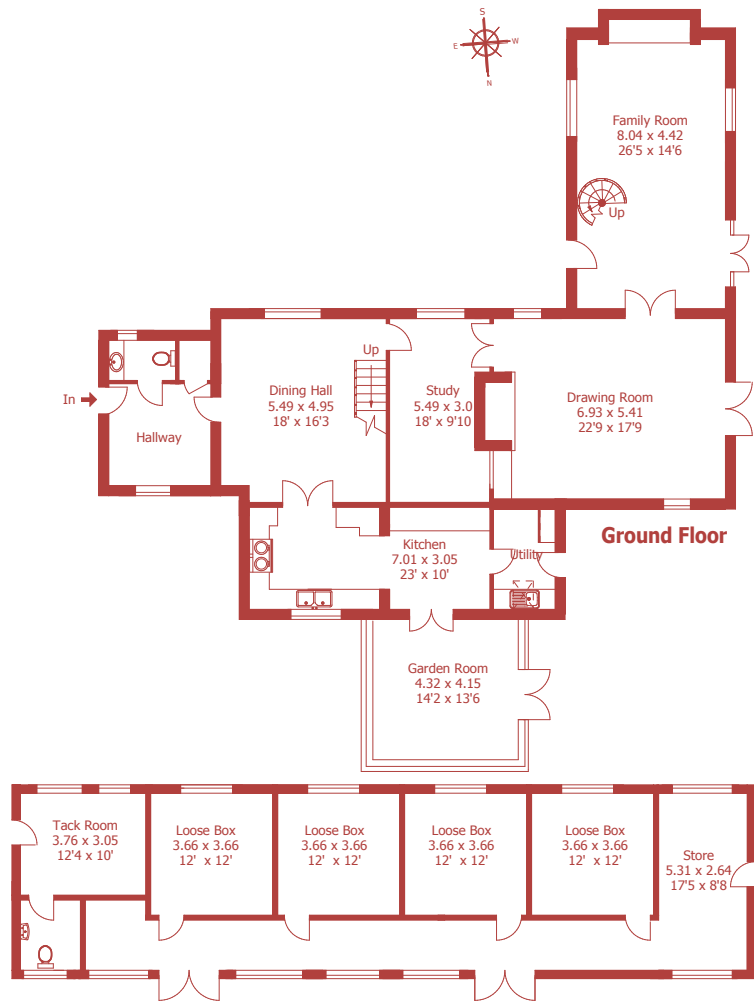
office suite accessible through a stainless steel frame, with windows, fully lined, suspended ceiling and fluorescent lighting, and a view onto the gardens. There is also a large, open-sided hay barn enclosed by shiplap timber to a height of 6ft, with lighting and power.

The front garden has 2 lawns, one semi-circular, with brick plinth and wrought iron railings, enclosed by established shrubs. The delightful rear garden is enclosed by an established beech hedge and has a large lawn. There is a crazy paved entertaining terrace with a pergola, small lawn, established trees and shrubs. Outside the garden room, there is a delightful side garden, with an enclosed entertaining terrace ideal for al fresco dining.

Agents' Note: An overage provision was imposed on the Title in 1999 for a 30 year period. The land has archaeological significance due to features dating back to the Roman period.







Approximate Gross Internal Area :- 330 sq m / 3555 sq ft  
 Outbuildings Approximate Gross Internal Area :- 287 sq m / 3090 sq ft

For identification purposes only, not to scale, do not scale  
 Created using existing drawings and dimensions

**DISCLAIMER:**

Winkworth wishes to inform prospective buyers that these particulars are a guide and act as information only. All our details are given in good faith and believed to be correct at the time of issue but they don't form part of an offer or contract. No Winkworth employee has authority to make or give any representation or warranty in relation to this property. All fixtures and fittings, whether fitted or not are deemed removable by the vendor unless stated otherwise and room sizes are measured between internal wall surfaces, including furnishings.



15 East Street | Wimborne | Dorset | BH21 1DT  
properties@christopherbatten.co.uk  
01202 841171

Christopher  
**Batten**

in association with

Winkworth