



COTTAM HOUSE, LONDON, SE3
£1,795 PER MONTH PART FURNISHED, UNFURNISHED

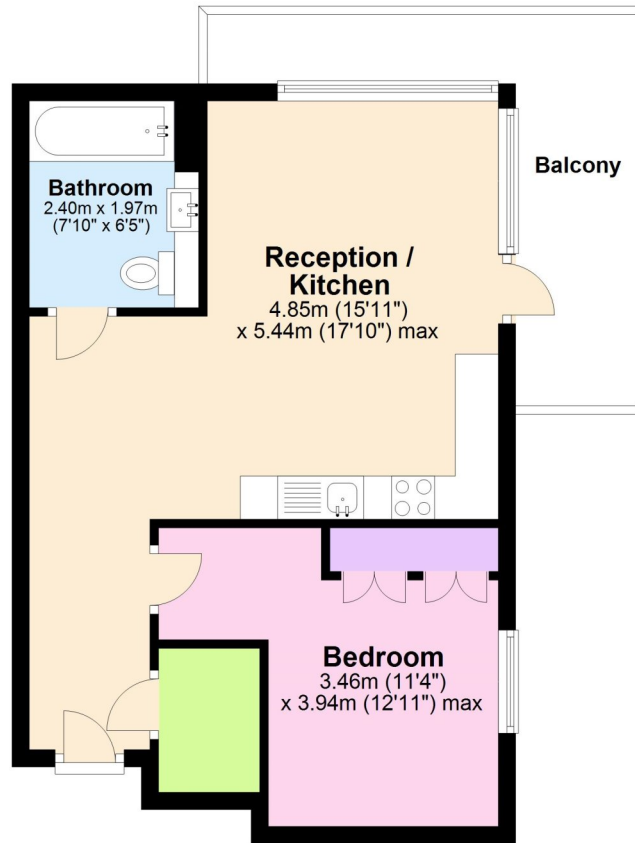
DESCRIPTION:

A stunning one bedroom apartment with a gymnasium and a 24 hour concierge included. Offered unfurnished/part furnished and available from 1st April 2025, your earliest viewing is essential.

Blackheath | 0208 8520999 | blackheath@winkworth.co.uk

Fourth Floor

Approx. 43.9 sq. metres (472.8 sq. feet)



Total area: approx. 43.9 sq. metres (472.8 sq. feet)

This floorplan is for illustration purposes only and is not to scale. The position and size of doors, windows, appliances and other features are approximate.

Energy Efficiency Rating		Current	Potential
Very energy efficient - lower running costs			
(92+)	A		
(81-91)	B	84	84
(69-80)	C		
(55-68)	D		
(39-54)	E		
(21-38)	F		
(1-20)	G		
Not energy efficient - higher running costs			
England, Scotland & Wales		EU Directive 2002/91/EC	

Deposit: £0.00

Holding Deposit:

Council Tax Band:

Where no figures are shown, we have been unable to ascertain the information. All figures that are shown were correct at the time of printing.