



RIVER COURT, LONDON ROAD, LEIGH ON SEA
£350,000 SHARE OF FREEHOLD

A BEAUTIFUL ONE BEDROOM FIRST FLOOR APARTMENT WITH STUDY

Leigh On Sea | 01702 470625 | leighonsea@winkworth.co.uk

Winkworth

for every step...

winkworth.co.uk



DESCRIPTION:

Winkworth of Leigh are delighted to present Flat 3 River Court which is a beautifully designed first floor apartment, perfectly combining modern style with practical living. Benefitting from its own private entrance, this stunning home offers a sense of exclusivity and charm.

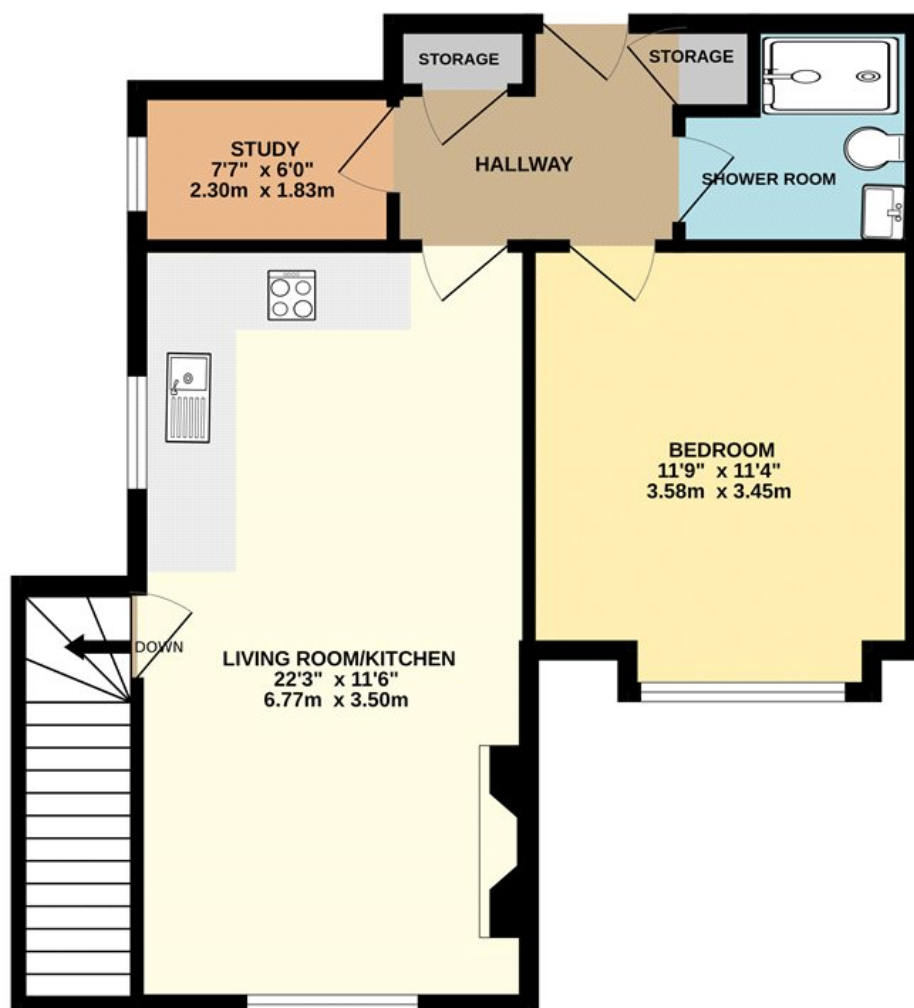
The spacious open-plan living area showcases the same elegant features as the rest of River Court, with a striking media wall, feature fireplace, and herringbone flooring throughout. A sleek fitted kitchen with integrated appliances provides both functionality and style, ideal for contemporary living.

The property comprises a generously sized double bedroom, a separate study – perfect for home working – and a gorgeous shower room enhanced by sensor lighting. The hallway also benefits from sensor lighting, adding a modern and practical touch.

Externally, the apartment comes with an allocated parking space, completing this superb home.



FIRST FLOOR



Whilst every attempt has been made to ensure the accuracy of the floorplan contained here, measurements of doors, windows, rooms and any other items are approximate and no responsibility is taken for any error, omission or mis-statement. This plan is for illustrative purposes only and should be used as such by any prospective purchaser. The services, systems and appliances shown have not been tested and no guarantee as to their operability or efficiency can be given.
Made with Metropix ©2025

This floorplan is for illustration purposes only and is not to scale. The position and size of doors, windows, appliances and other features are approximate.

Tenure: Share of Freehold

Service Charge: £tba

Ground Rent: £ tba

Council Tax Band: tba

Where no figures are shown, we have been unable to ascertain the information. All figures that are shown were correct at the time of printing.

Leigh On Sea | 01702 470625 | leighonsea@winkworth.co.uk

Winkworth

for every step...

[winkworth.co.uk](https://www.winkworth.co.uk)

Winkworth wishes to inform prospective buyers and tenants that these particulars are a guide and act as information only. All our details are given in good faith and believed to be correct at the time of printing but they don't form part of an offer or contract. No Winkworth employee has authority to make or give any representation or warranty in relation to this property. All fixtures and fittings, whether fitted or not are deemed removable by the vendor unless stated otherwise and room sizes are measured between internal wall surfaces, including furnishings.