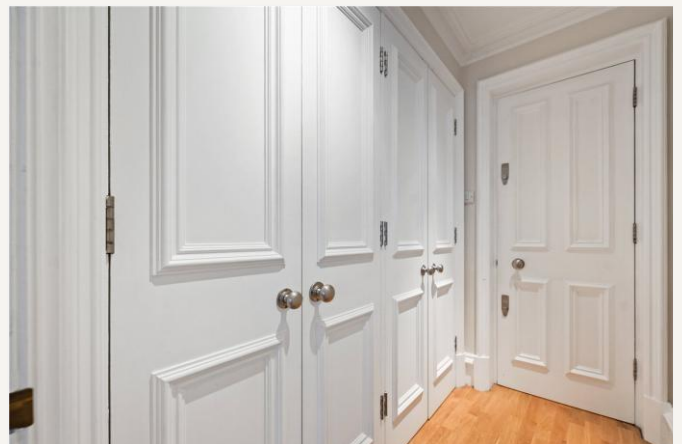




Ladbroke Square, W11  
£450 per week (£1,950 PCM) *Furnished*



A VERY SPACIOUS STUDIO FLAT IN THIS STUNNING PERIOD BUILDING LOCATED IN A HIGHLY SOUGHT AFTER LOCATION A SHORT WALK FROM THE TUBE



Notting Hill Lettings  
0207 727 3227 | nottinghill@winkworth.co.uk



for every step...





A very spacious studio flat in this stunning period building located in a highly sought after location a short walk from the tube. The property comprises: Separate entrance, spacious living room with wood floors, separate fitted kitchen and fantastic walk in storage area.

The flat further benefits to apply for the highly sought after Ladbroke Square communal gardens (charges may apply). The property is available on a furnished basis, and viewings are highly recommended.

Ladbroke Square is a stunning garden square at the heart of Notting Hill. The property is located on the southern side and is a short walk from the abundant amenities of both Notting Hill Gate and Holland Park Avenue.

#### Utilities:

Electricity – Mains

Water – Mains

Sewerage – Mains

Heating – Gas

Broadband <https://checker.ofcom.org.uk/en-gb/broadband-coverage>

Mobile Coverage <https://checker.ofcom.org.uk/en-gb/mobile-coverage>

#### MATERIAL INFO

**Deposit:** £2,250

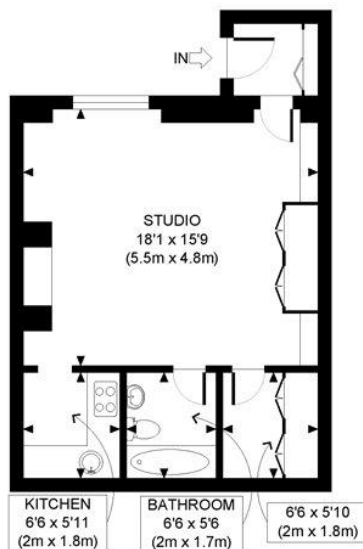
**Holding Deposit:** £450

**Council Tax Band:** H (RBKC)









LOWER GROUND FLOOR  
GROSS INTERNAL  
FLOOR AREA 437 SQ FT

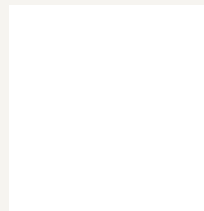
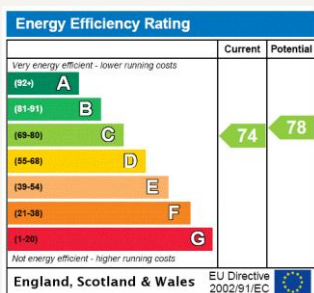
APPROX. GROSS INTERNAL FLOOR AREA: 437 SQ FT/ 41 SQM



This plan is for illustrative purposes only and should be used as such by any prospective client. Whilst every attempt has been made to ensure the accuracy of the Floor Plan contained here, measurements of the doors, windows, rooms and any other items are approximate and no responsibility is taken for any errors, omissions, or misstatement. The services, systems and appliances shown have not been tested and no guarantee as to the operability or efficiency can be given.

PROPERTY PHOTO PLANS COOK

For more information, scan the QR code or visit the link below



<https://www.winkworth.co.uk/rent/property/NHS240153>

Where no figures are shown, we have been unable to ascertain the information. All figures that are shown were correct at the time of printing.

Notting Hill Lettings

0207 727 3227 | [nottinghill@winkworth.co.uk](mailto:nottinghill@winkworth.co.uk)



for every step...

Winkworth wishes to inform prospective buyers and tenants that these particulars are a guide and act as information only. All our details are given in good faith and believed to be correct at the time of printing but they don't form part of an offer or contract. No Winkworth employee has authority to make or give any representation or warranty in relation to this property. All fixtures and fittings, whether fitted or not are deemed removable by the vendor unless stated otherwise and room sizes are measured between internal wall surfaces, including furnishings.