



TAMAR HOUSE, READING, BERKSHIRE, RG1 1LG
£1,750 PER MONTH FURNISHED

**LUXURY TWO BEDROOM PENTHOUSE APARTMENT
 LOCATED ON THE FIFTH FLOOR OF TAMAR HOUSE IN
 THE HEART OF READING TOWN CENTRE**

Reading | 0118 4022 300 | reading@winkworth.co.uk

Winkworth

for every step...

winkworth.co.uk



DESCRIPTION:

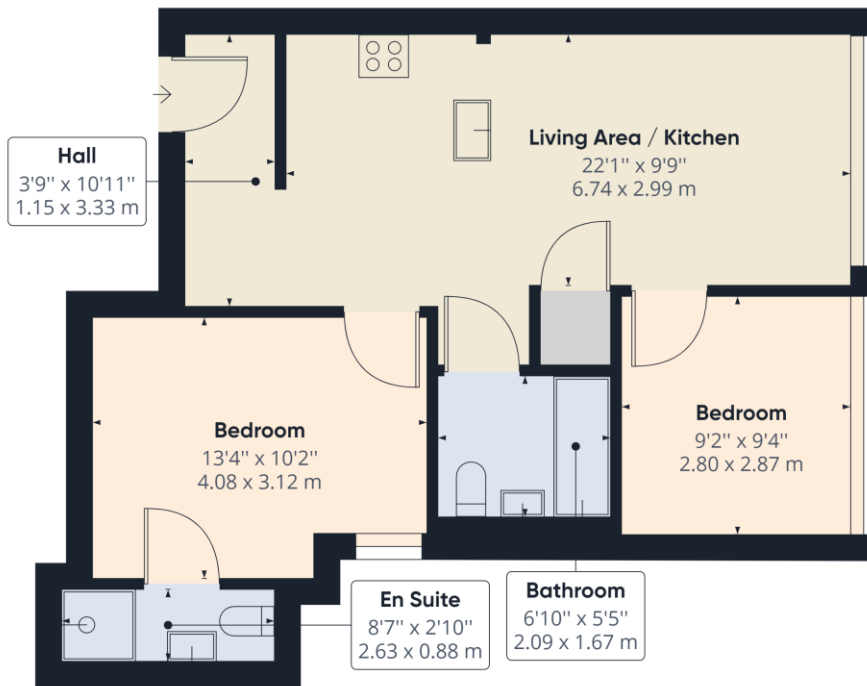
Two bedroom penthouse apartment located on the fifth floor of Tamar House in the heart of Reading town centre, a short walk from Reading train station. The property comprises a spacious living room with open plan kitchen benefitting from integrated appliances, two double bedrooms with an en suite shower room to the master bedroom and a modern three piece bathroom. Benefits also include bike storage and lift access. (No parking) Available 6th September 2025. Furnished.

AT A GLANCE

- Close to Reading train station
- Penthouse apartment
- Two double bedrooms
- Two bathrooms
- Council tax band C
- Available 6th September
- Furnished







Approximate total area⁽¹⁾
580.70 ft²
53.95 m²

(1) Excluding balconies and terraces

While every attempt has been made to ensure accuracy, all measurements are approximate, not to scale. This floor plan is for illustrative purposes only.

GIRAFFE360

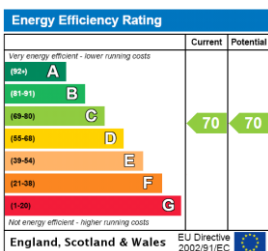
This floorplan is for illustration purposes only and is not to scale. The position and size of doors, windows, appliances and other features are approximate.

Deposit: £2,019.23

Holding Deposit: £403.84

Council Tax Band: C

Where no figures are shown, we have been unable to ascertain the information. All figures that are shown were correct at the time of printing.



Reading | 0118 4022 300 | reading@winkworth.co.uk

Winkworth

for every step...

winkworth.co.uk

Winkworth wishes to inform prospective buyers and tenants that these particulars are a guide and act as information only. All our details are given in good faith and believed to be correct at the time of printing but they don't form part of an offer or contract. No Winkworth employee has authority to make or give any representation or warranty in relation to this property. All fixtures and fittings, whether fitted or not are deemed removable by the vendor unless stated otherwise and room sizes are measured between internal wall surfaces, including furnishings.