

Ennismore Gardens, London, SW7
£2,250,000 LEASEHOLD

1  1  1 



Winkworth Knightsbridge
020 7589 6616 | knightsbridge@winkworth.co.uk

Winkworth
for every step...

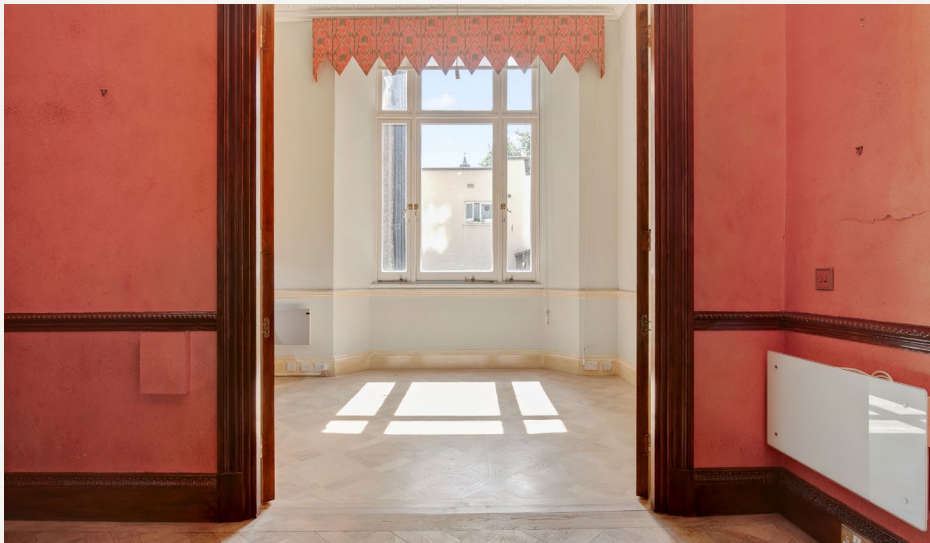
A Grand Knightsbridge Residence with Timeless Elegance and Iconic Views

ABOUT THIS HOUSE

Set within a grand period building just south of Hyde Park, this elegant apartment boasts nearly 4-metre-high ceilings, original cornicing and ceiling roses. The spacious drawing room overlooks an award-winning garden square, while large double doors lead to a dining area and a bespoke kitchen with a bright southerly window framing the iconic Brompton Oratory. A marble-floored corridor connects to a bathroom, separate WC, and a generous double bedroom with dual-aspect windows and ornate ceiling detailing. Originally configured as a two-bedroom, the layout can be easily reinstated. With over 1,100 sq ft of internal space and a private storage cupboard on the first floor, this is a rare opportunity to enjoy classical proportions in a prime Knightsbridge location.

KEY FEATURES

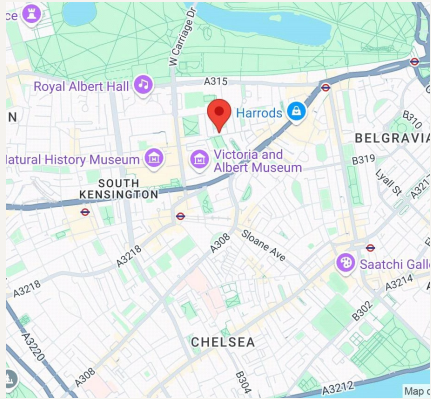
- 1 bedrooms
- 1 reception room
- 1 bathrooms
- 1,129 Square Feet
- Raised Ground Floor
- Prime Location









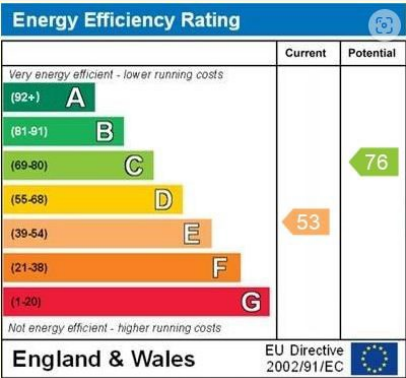


FINER DETAILS

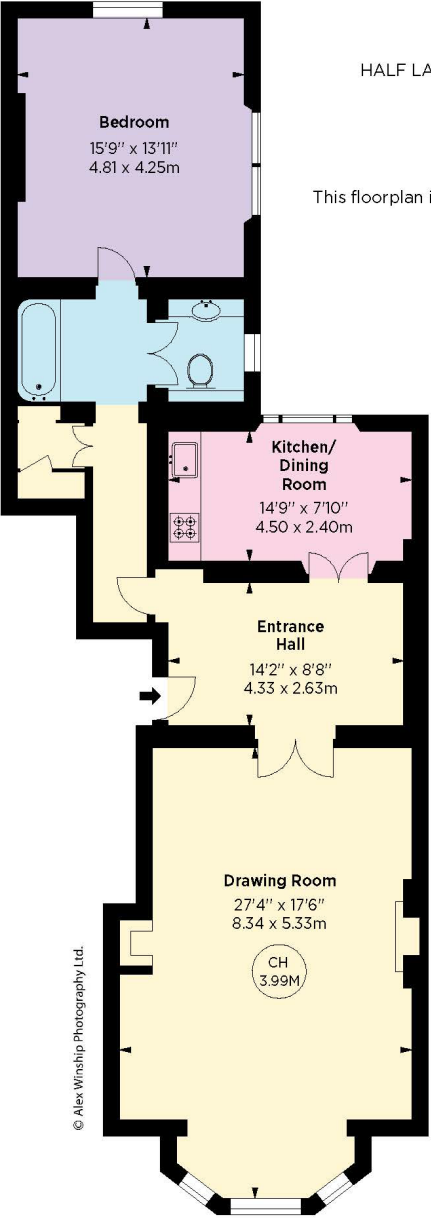
- 1 bedrooms
- 1 reception room
- 1 bathrooms
- 1,129 Square Feet
- Raised Ground Floor
- Prime Location

Leasehold: 91 years

Service Charge: £6,500 pa



Key:
CH - Ceiling Height
- Under 1.5m



RAISED GROUND FLOOR

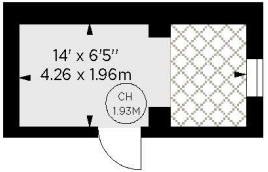
Ennismore Gardens, SW7

APPROX. GROSS INTERNAL AREA *
1129 Sq Ft - 104.88 Sq M

HALF LANDING STORAGE APPROX. GROSS INTERNAL AREA *
86 Sq Ft - 7.99 Sq M

TOTAL APPROX. GROSS INTERNAL AREA *
1215 Sq Ft - 112.87 Sq M

This floorplan is for GUIDANCE ONLY and NOT FOR VALUATION purposes.



HALF LANDING STORAGE

© Alex Winship Photography Ltd.



Winkworth Knightsbridge
020 7589 6616 | knightsbridge@winkworth.co.uk

Winkworth

for every step...