



Kingfisher Place, Berkshire, RG1 8BQ

£1,350 per month *Furnished*



A delightful one bedroom garden flat overlooking the River Thames in a secure gated development. Conveniently located a short walk to Reading Station, the Town Centre and Caversham this well presented apartment comprises; a double bedroom, lounge/diner, a modern fitted kitchen/breakfast room and modern bathroom. The property further benefits from a private riverside garden which is accessed from the lounge/diner and allocated parking via electronic gates. Available now. Furnished.

KEY FEATURES

- One Bedroom Garden Flat Overlooking The River Thames
- Private Garden
- Modern Fitted Kitchen
- Council tax band C
- Secure Gated Off Road Parking Space
- Available now
- Furnished



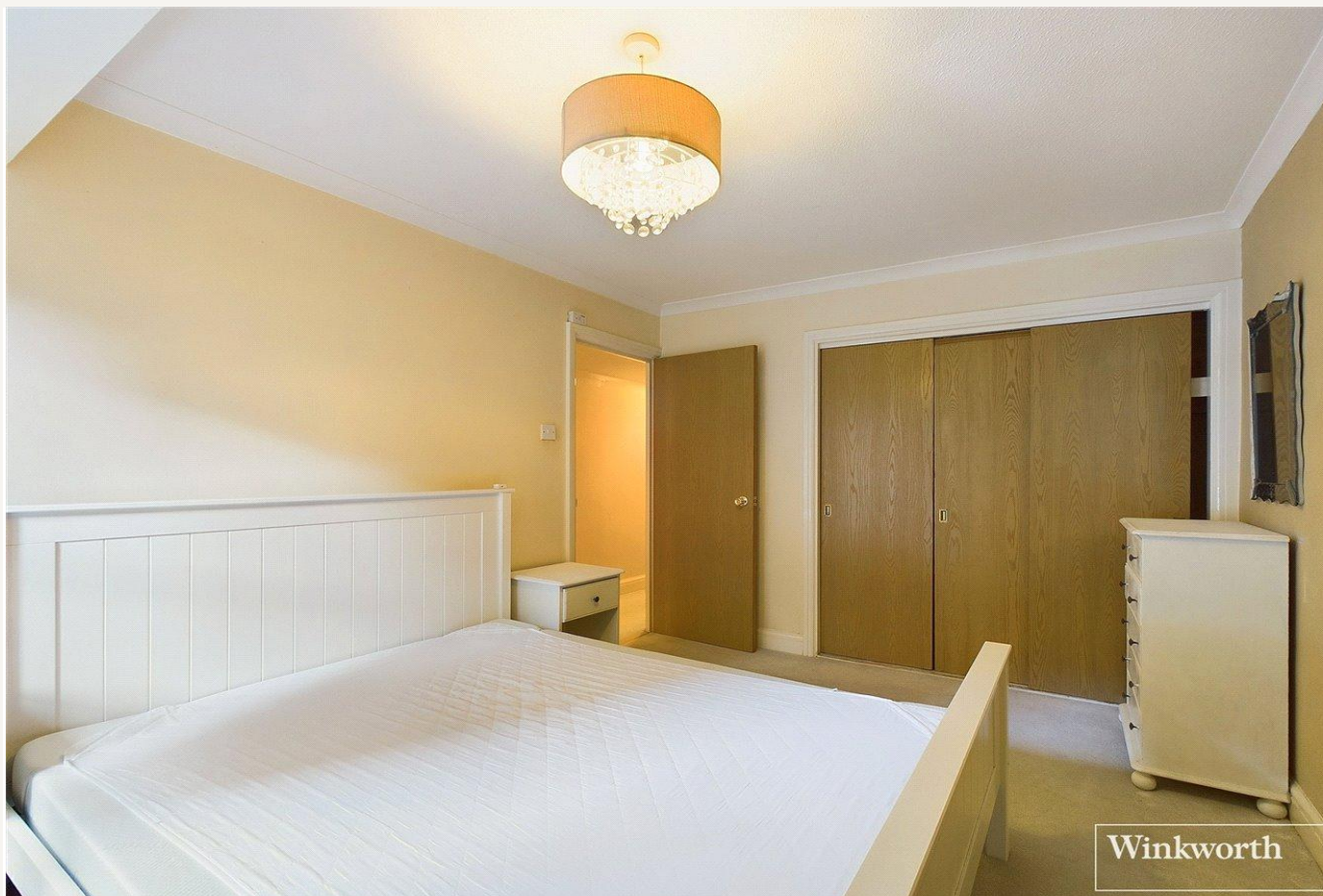
Reading

0118 4022 300 | reading@winkworth.co.uk

Winkworth

for every step...





Winkworth



Winkworth

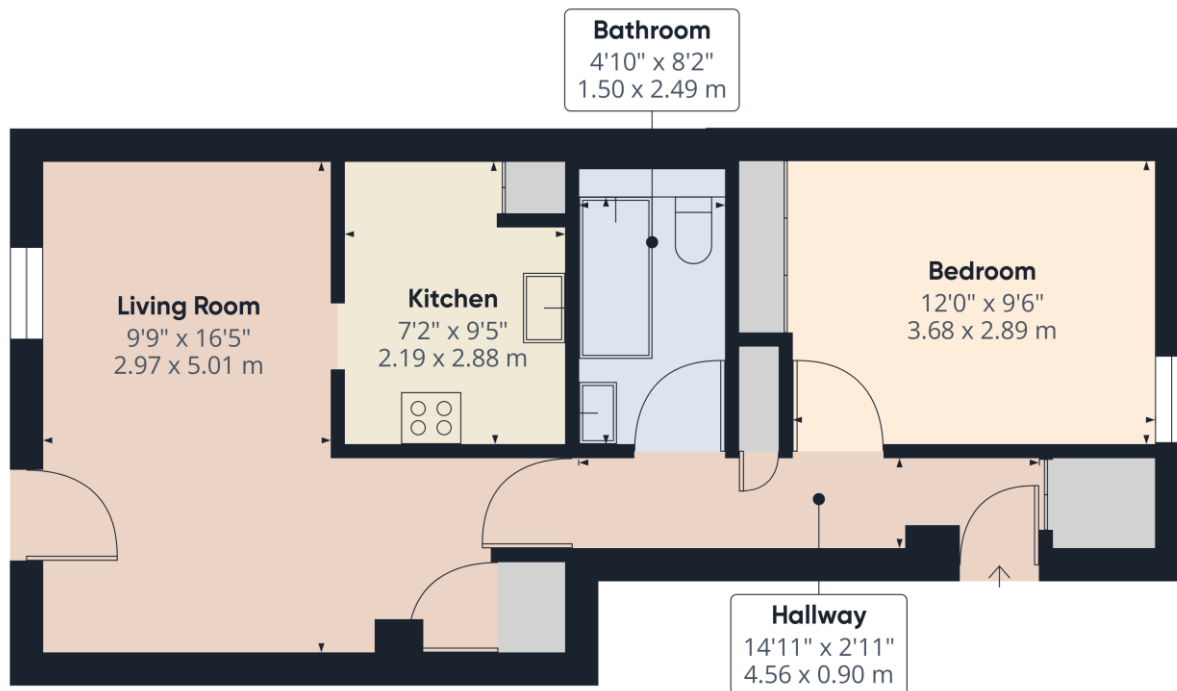


MATERIAL INFO

Deposit: £1,557.69

Holding Deposit: £311.53

Council Tax Band: C



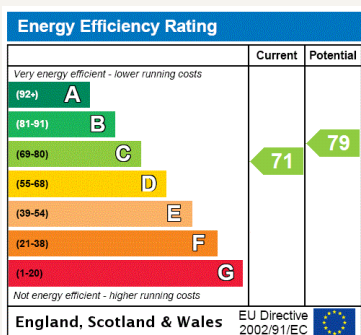
Approximate total area⁽¹⁾
500.19 ft²
46.47 m²

(1) Excluding balconies and terraces

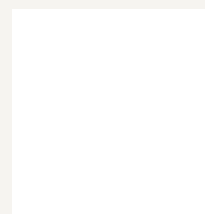
While every attempt has been made to ensure accuracy, all measurements are approximate, not to scale. This floor plan is for illustrative purposes only.

Calculations are based on RICS IPMS 3C standard.

GIRAFFE360



For more information, scan the QR code or visit the link below



<https://www.winkworth.co.uk/rent/property/REA190269>

Where no figures are shown, we have been unable to ascertain the information. All figures that are shown were correct at the time of printing.

Reading

0118 4022 300 | reading@winkworth.co.uk

Winkworth

for every step...

Winkworth wishes to inform prospective buyers and tenants that these particulars are a guide and act as information only. All our details are given in good faith and believed to be correct at the time of printing but they don't form part of an offer or contract. No Winkworth employee has authority to make or give any representation or warranty in relation to this property. All fixtures and fittings, whether fitted or not are deemed removable by the vendor unless stated otherwise and room sizes are measured between internal wall surfaces, including furnishings.