



Lakeside Road, Brook Green, London, W14

£675,000 Leasehold

A well presented two double bedroom flat on the raised ground floor of a mid-terrace Victorian house.

Reception Room | Kitchen | 2 Bedrooms | Bathroom | 770 Sq Ft / 71.5 Sq M | Council Tax Band C |
EPC Rating Band D

Winkworth

winkworth.co.uk

for every step...



LOCATION

Lakeside Road is a quiet residential street, ideally located for the numerous amenities of both Brook Green and Shepherds Bush, including Westfield London, as well as the open spaces of Holland Park. The closest stations are Shepherds Bush (Central Line and Overground) and Hammersmith (Piccadilly, District, Circle and Hammersmith & City Lines). The eagerly anticipated and soon to open Kensington Olympia redevelopment is also within close proximity.

DESCRIPTION

Well presented throughout, the flat offers accommodation which comprises entrance hall, reception room, kitchen, two double bedrooms and shower room. The flat offers superb ceiling height, as well as a variety of period features.



Lease:- 215 years from 31 March 1988

Service Charge:- £1,060 p.a.

Ground Rent:- N/A

LOCAL AUTHORITY

Hammersmith & Fulham

TENURE

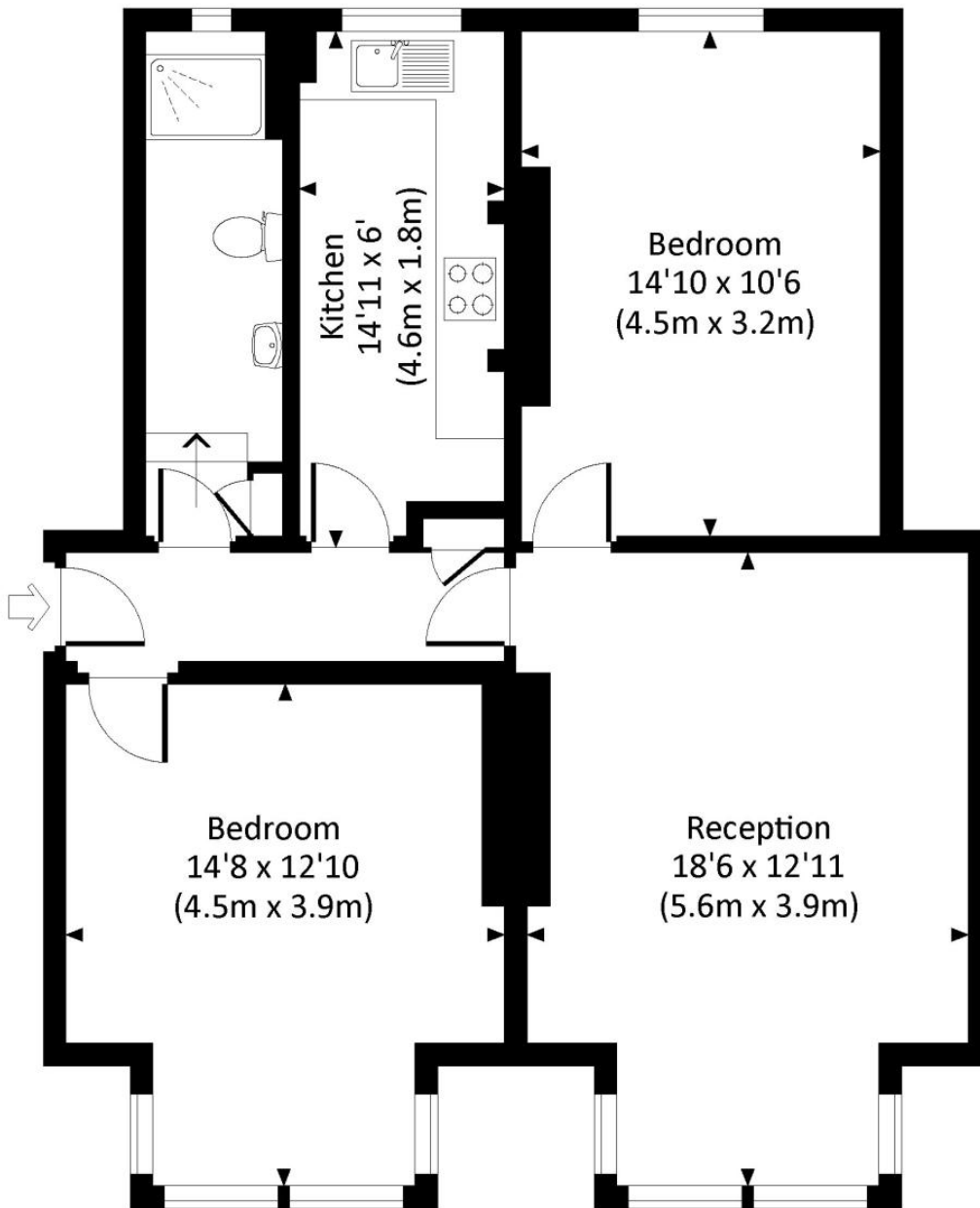
Leasehold 177 years 6 months.

PRICE: £675,000 Leasehold

Energy Efficiency Rating		
	Current	Potential
Very energy efficient - lower running costs		
(92+) A		
(81-91) B		
(69-80) C		77
(55-68) D	68	
(39-54) E		
(21-38) F		
(1-20) G		
Not energy efficient - higher running costs		
England, Scotland & Wales		EU Directive 2002/91/EC

LAKESIDE ROAD, W14

Approx. gross internal area
770 Sq Ft. / 71.5 Sq M.



RAISED GROUND FLOOR



All measurements are approximate and for illustration purposes only as defined by the RICS Code of Measuring Practice © 2014
Dowling Jones Design www.dowlingjones.com 020 7610 9933

The displayed square footage is taken from the floor plans with measurements created using the Royal Institute of Chartered Surveyors' Code of Practice for Measuring. These measurements are approximate and included for illustrative purposes only. Winkworth does not make any representation as to the accuracy of these measurements and you should seek to verify them for yourself. Winkworth accept no liability for any loss you may suffer if you rely on these measurements.

Hammersmith | 0207 371 4466 | hammersmith@winkworth.co.uk

Winkworth

for every step...

Under the Property Misdescriptions Act 1991, these Particulars are a guide and act as information only. All details are given in good faith and are believed to be correct at time of printing. Winkworth give no representation as to their accuracy and potential purchasers or tenants must satisfy themselves by inspection or otherwise as to their correctness. No employee of Winkworth has authority to make or give any representation or warranty in relation to this property.