



STANMORE CLOSE, ASCOT, BERKSHIRE, SL5
£1,395 PCM

Winkworth



STANMORE CLOSE, ASCOT, BERKSHIRE, SL5

A wonderfully presented, three bedroom house located with a short walk of Ascot mainline station and high street with its array of boutique shops, restaurants and local amenities.

On the ground floor there is a spacious living room leading onto the modern fitted kitchen with integrated appliances and 4-person breakfast bar. From here you have direct access via French doors to the well maintained private rear garden with patio area.

The first floor comprises large master bedroom with two further bedrooms and family bathroom suite. The property further benefits from a secluded rear garden and patio area with private garage and off street parking.

The property is situated giving convenient access to all the excellent nearby schools and Ascot high street and mainline station moments away.

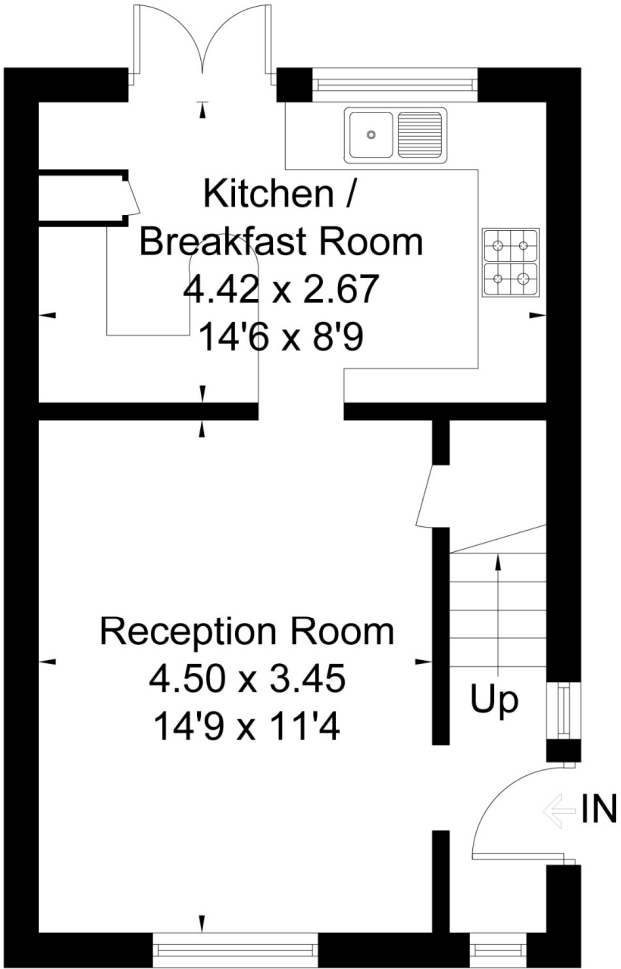
The area also offers a range of leisure facilities, including Windsor Great Park, Savill Gardens, Virginia Water Lake, Wentworth Golf Club, Ascot Race Course and Guards Polo Club. There is also excellent road and rail connections to London Waterloo, Reading, the M3, M25 and Heathrow airport. EPC rating C.

Available May. Unfurnished.

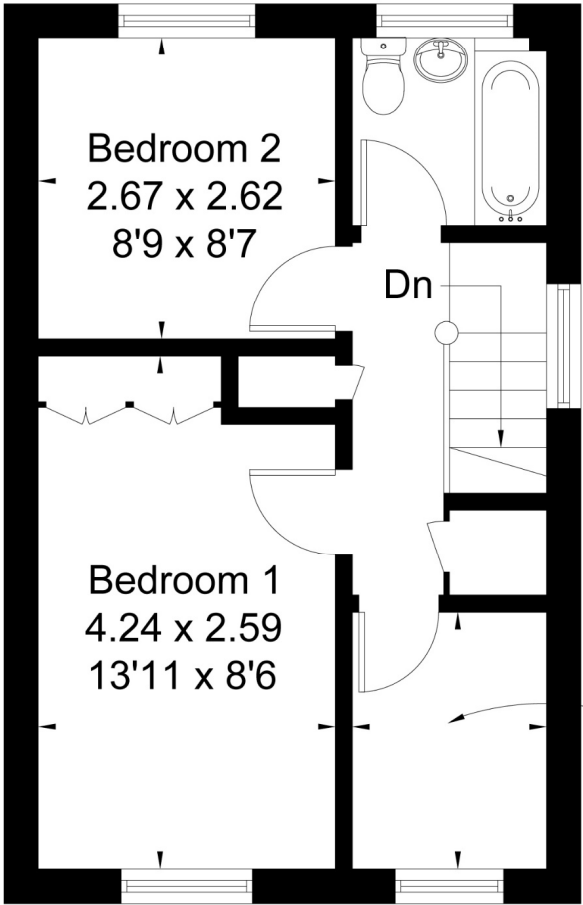




Approximate Floor Area = 79.1 sq m / 852 sq ft



Ground Floor



First Floor

Drawn for illustration and identification purposes only by fourwalls-group.com 228675

Bedroom 3
2.26 x 1.78
7'5 x 5'10

