



**SOUTHCROFT ROAD, SW17**  
**£770,000 FREEHOLD**

## **STUNNING THREE DOUBLE BEDROOM CONTEMPORARY FAMILY HOME PRESENTED IN IMMACULATE CONDITION**

**Tooting | 020 8767 5221 | [tooting@winkworth.co.uk](mailto:tooting@winkworth.co.uk) 17 Upper Tooting Road,  
London, SW17 7TS**

**Winkworth**

**for every step...**

*[winkworth.co.uk](http://winkworth.co.uk)*



## SUMMARY

A stunning three double bedroom contemporary family home presented in immaculate condition. The property benefits from a large reception room with a gorgeous period feature fireplace and built in bookshelves. To the rear of the house is a stunning open plan kitchen/diner which has been beautifully extended to offer ample storage space and integral appliances. There are large French doors leading out to the private garden. On the first floor are two superb double bedrooms. Separate modern family bathroom and separate w/c. The second floor comprises a wonderful master bedroom with en-suite shower room. Externally, the rear garden is mainly patioed with beautiful raised beds surrounding the borders creating a tranquil place to relax and entertain.

Located on Southcroft Road in the well regarded residential area of Furzedown, the property is within easy reach of Tooting Broadway, which offers a good selection of shops and amenities as well as being close to local schools.



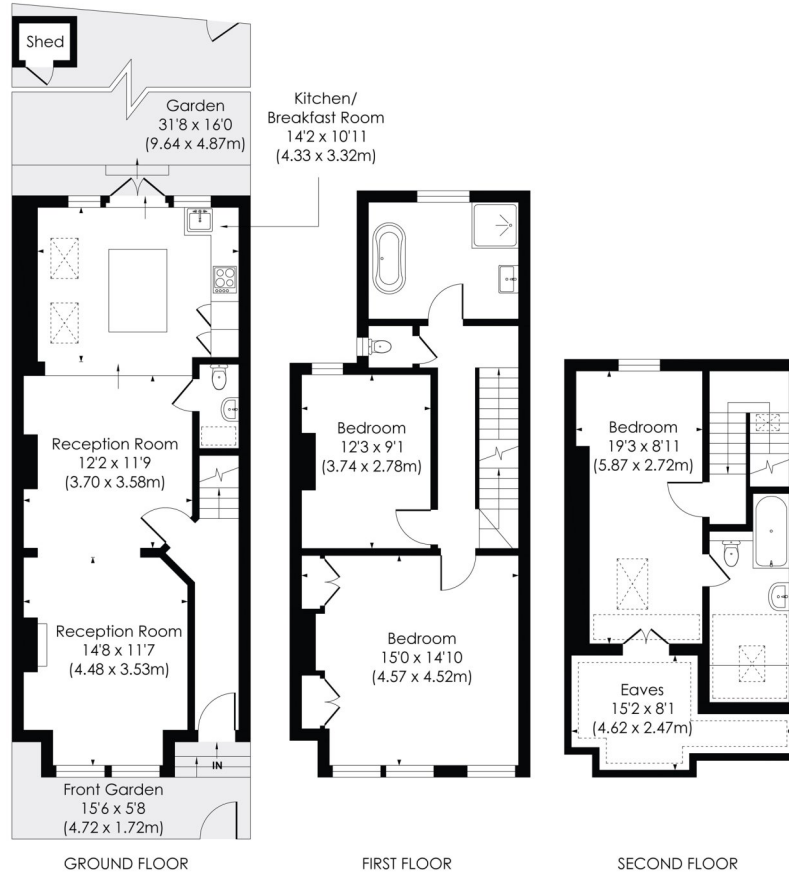




## SOUTHCROFT ROAD, SW17

Approx. Gross Internal Floor Area

**1457 Sq. ft/135.40 Sq. m**  
(Including Eaves)

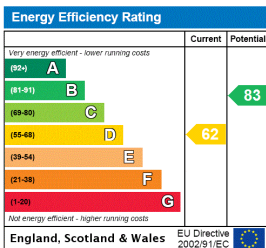


© Pixangle Property Marketing Ltd. info@pixangle.com Tel: 0208 870 2118

**pixangle**  
PROPERTY MARKETING

This floor plan has been prepared for the purpose of illustration only in accordance with the latest RICS code of measuring practice and is not to scale. All measurements and areas are approximate and whilst every effort has been made to ensure the accuracy of the plan contained here, no responsibility is taken for any error, omission or misstatement.

This floorplan is for illustration purposes only and is not to scale. The position and size of doors, windows, appliances and other features are approximate.



Tooting | 020 8767 5221 | tooting@winkworth.co.uk  
17 Upper Tooting Road, London, SW17 7TS

# Winkworth

for every step...

winkworth.co.uk

Winkworth wishes to inform prospective buyers and tenants that these particulars are a guide and act as information only. All our details are given in good faith and believed to be correct at the time of printing but they don't form part of an offer or contract. No Winkworth employee has authority to make or give any representation or warranty in relation to this property. All fixtures and fittings, whether fitted or not are deemed removable by the vendor unless stated otherwise and room sizes are measured between internal wall surfaces, including furnishings.