



ST. CHARLES SQUARE, W10
£4,250 PER MONTH PART FURNISHED

Winkworth



ST. CHARLES SQUARE, W10

Stunning 3-Bedroom Period Maisonette with Private Garden in Sought-After Ladbroke Grove /Notting Hill

Nestled in the highly desirable area of Ladbroke Grove, this beautifully presented three-bedroom period maisonette effortlessly combines classic charm with contemporary style.

Occupying a generous footprint, the property is part-furnished and ideal for professionals, couples, or small families seeking a stylish and comfortable home in one of West London's most vibrant neighbourhoods.

Inside, the spacious living area which benefits from a good amount of natural light, offering a warm and inviting atmosphere that flows seamlessly into the , fully fitted kitchen—complete with quality appliances and ample storage. Period features add character, while thoughtful updates ensure a high standard of living.

Step outside to your private garden, a rare and welcome retreat perfect for al fresco dining, entertaining guests, or simply unwinding after a long day.



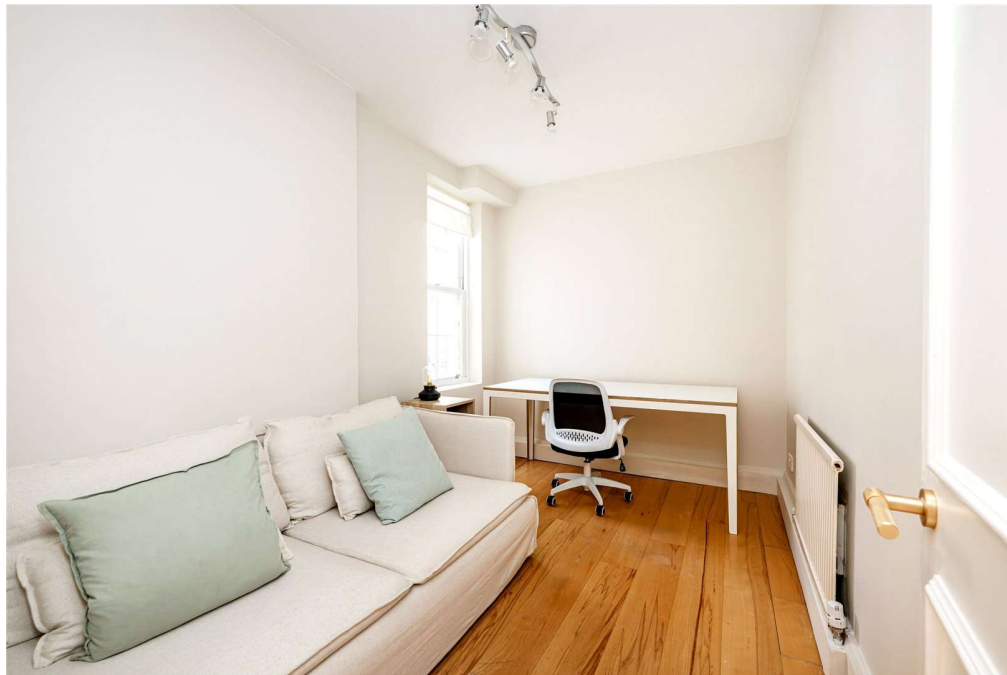
Additional benefits include:

Three well-proportioned bedrooms

Residents' parking

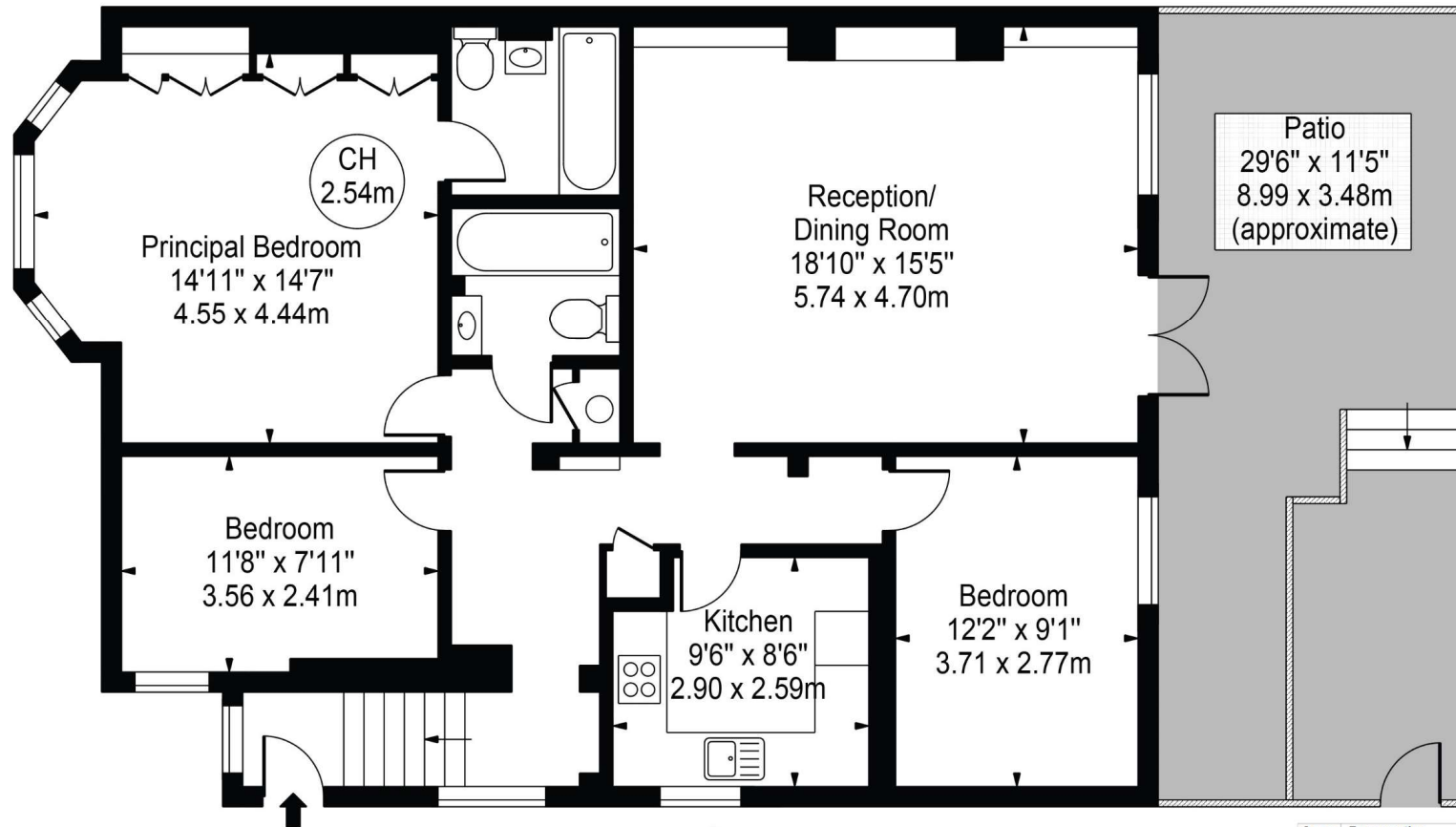
Close proximity to excellent transport links (Ladbroke Grove Underground Station)

Easy access to local shops, cafes, and renowned restaurants



St. Charles Square

Approx. Gross Internal Area 1075 Sq Ft - 99.87 Sq M



Lower Ground Floor

For Illustration Purposes Only - Not To Scale

This floor plan should be used as a general outline for guidance only and does not constitute in whole or in part an offer or contract. Any intending purchaser or lessee should satisfy themselves by inspection, searches, enquiries and full survey as to the correctness of each statement. Any areas, measurements or distances quoted are approximate and should not be used to value a property or be the basis of any sale or let.

Copyright Morriarti Photography & Design LTD

Score	Energy rating	Current	Potential
92+	A		
81-91	B		
69-80	C		79 C
55-68	D	61 D	
39-54	E		
21-38	F		
1-20	G		

North Kensington | 020 7792 5000 | northkensington@winkworth.co.uk

winkworth.co.uk

Winkworth wishes to inform prospective buyers and tenants that these particulars are a guide and act as information only. All our details are given in good faith and believed to be correct at the time of printing but they don't form part of an offer or contract. No Winkworth employee has authority to make or give any representation or warranty in relation to this property. All fixtures and fittings, whether fitted or not are deemed removable by the vendor unless stated otherwise and room sizes are measured between internal wall surfaces, including furnishings.

Winkworth