



CHICKSAND STREET, LONDON, E1
£900,000 FREEHOLD

A FOUR BEDROOM FREEHOLD HOUSE SET OVER THREE FLOORS WITH PARKING AND PRIVATE GARDEN

Shoreditch | 020 7749 7650 | shoreditch@winkworth.co.uk

Winkworth



DESCRIPTION:

Nestled between the ever-trendy Shoreditch and the up-and-coming Whitechapel area is this rare to market four-bedroom freehold house which is spread over three floors offering generous living space throughout. The property is set on Chicksand Street and offers peace and tranquillity yet is conveniently placed for access into the City.

The property comprises entrance hall, downstairs W.C and office, spacious kitchen/breakfast room, family bathroom with three-piece suite and four double bedrooms, the master benefits from fitted wardrobes. The property also benefits from a private driveway with space for two cars, side and rear garden, gas central heating, double glazing, shed and conservatory. This property would make an ideal family home and could also make a great investment property.

Chicksand Street is ideally positioned giving fantastic access across the City with Whitechapel (Crossrail), Aldgate, Aldgate East, Liverpool Street, Shadwell (DLR) and Shoreditch overground all within easy walking distance. There are also numerous bus routes available. You are spoilt for choice with local amenities with Brick Lane, Spitalfields Market and Whitechapel High Street all on your doorstep with an array of boutique shops, cafes, bars and restaurants.

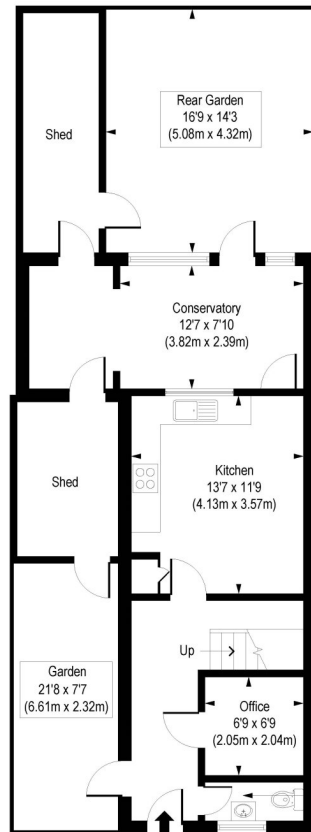
Winkworth



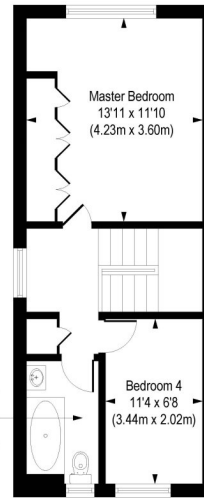
Winkworth

Chicksand Street, E1

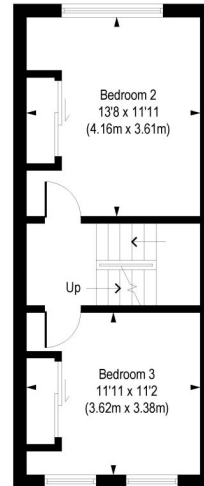
Approx. Gross Internal Floor Area 1262 sq. ft / 117.20 sq. m



Ground Floor
Gross Internal
Floor Area 506 sq ft



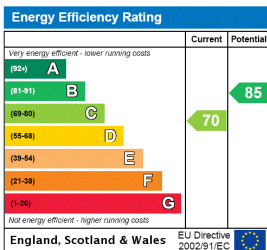
Second Floor
Gross Internal
Floor Area 384 sq ft



First Floor
Gross Internal
Floor Area 372 sq ft

COMPLIANT WITH RICS CODE OF MEASURING PRACTICE. Floorplan is for illustrative purposes only and is not to scale. Every attempt has been made to ensure the accuracy of the floorplan shown, however all measurements, fixtures, fittings and data shown are an approximate interpretation for illustrative purposes only. Liability for errors, omissions or mis-statement through negligence or otherwise is hereby excluded.

This floorplan is for illustration purposes only and is not to scale. The position and size of doors, windows, appliances and other features are approximate.



Shoreditch | 020 7749 7650 | shoreditch@winkworth.co.uk



winkworth.co.uk

See things differently

Winkworth wishes to inform prospective buyers and tenants that these particulars are a guide and act as information only. All our details are given in good faith and believed to be correct at the time of printing but they don't form part of an offer or contract. No Winkworth employee has authority to make or give any representation or warranty in relation to this property. All fixtures and fittings, whether fitted or not are deemed removable by the vendor unless stated otherwise and room sizes are measured between internal wall surfaces, including furnishings.