



HEWER STREET, W10  
£2,500,000 SHARE OF FREEHOLD

Winkworth



## HEWER STREET, W10

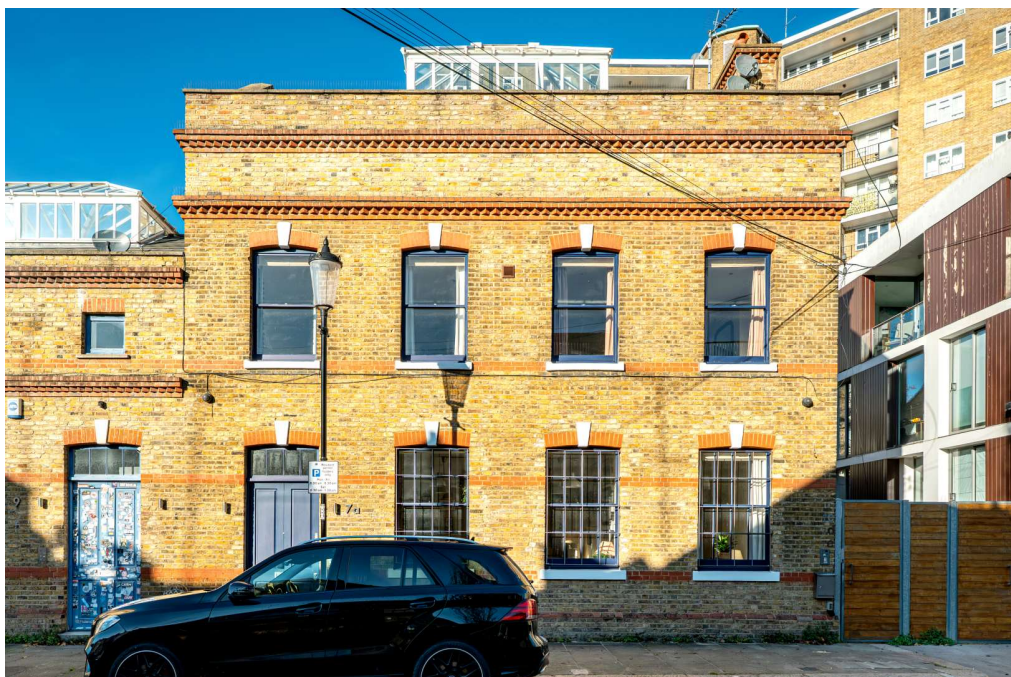
Behind its charming façade, this beautifully considered Hewer Street home opens into a welcoming, panelled hallway that sets the tone for the style beyond. Ascend to a light-filled open-plan living space where a vaulted glass roof, blonde timber floors and an industrial-meets-organic palette create an uplifting hub for everyday living and effortless entertaining. A contemporary kitchen with marble worktops, teal tiles and a playful porthole window flows into a cosy lounge, while sliding glass doors reveal a private decked terrace—perfect for alfresco moments.

Downstairs, a skylit stairwell leads to serene sleeping quarters. The principal bedroom is a calming retreat with a striking black fireplace, complemented by a flexible dressing room or study and a chic en suite with bathtub. Two additional bedrooms, finished with painted brickwork, share a contemporary shower room in soft cream mosaic and sky-blue metro tiles.



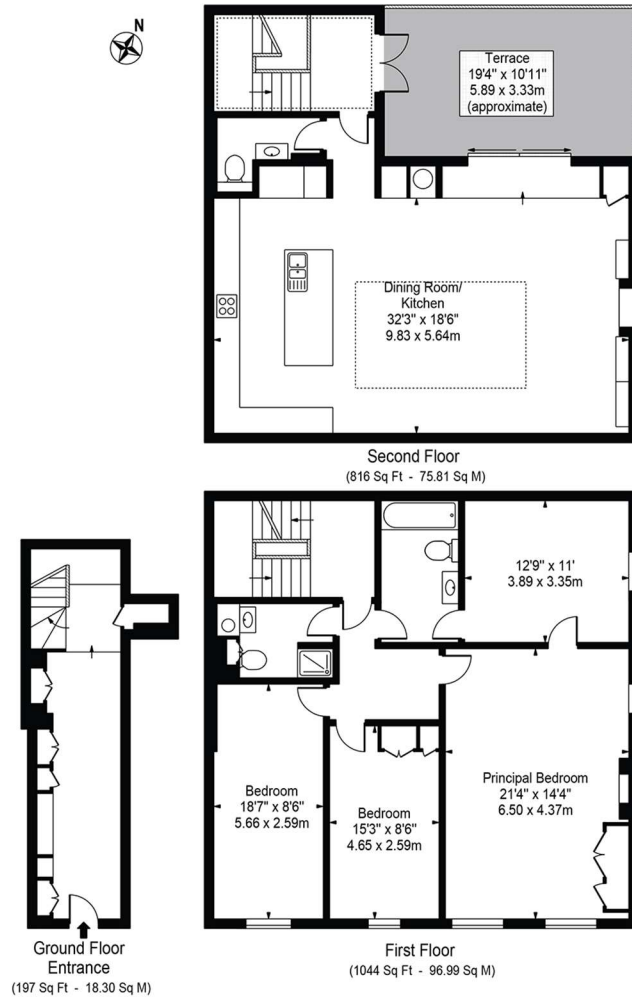
## Location

Set in the heart of North Kensington, the home enjoys a neighbourhood celebrated for its community spirit and village-like charm. Tree-lined streets, independent cafés, local shops and generous green spaces offer a rare blend of tranquillity and convenience. Within 10 minutes, explore the vibrant energy of Golborne Road—perfect for pastries at Layla's, lunch at Pizza East, browsing antiques or wandering to Little Wormwood Scrubs. Westfield's luxury Village and excellent transport links keep the best of London's culture, retail and dining close at hand.



# Hewer Street

Approx. Gross Internal Area 2057 Sq Ft - 191.10 Sq M



For Illustration Purposes Only - Not To Scale

This floor plan should be used as a general outline for guidance only and does not constitute in whole or in part an offer or contract. Any intending purchaser or lessee should satisfy themselves by inspection, searches, enquiries and full survey as to the correctness of each statement. Any areas, measurements or distances quoted are approximate and should not be used to value a property or be the basis of any sale or let. Copyright Morriarti Photography & Design LTD

Score	Energy rating	Current	Potential
92+	A		
81-91	B		
69-80	C		
55-68	D		69 D
39-54	E	46 E	
21-38	F		
1-20	G		

North Kensington | 020 7792 5000 | northkensington@winkworth.co.uk

winkworth.co.uk

Winkworth wishes to inform prospective buyers and tenants that these particulars are a guide and act as information only. All our details are given in good faith and believed to be correct at the time of printing but they don't form part of an offer or contract. No Winkworth employee has authority to make or give any representation or warranty in relation to this property. All fixtures and fittings, whether fitted or not are deemed removable by the vendor unless stated otherwise and room sizes are measured between internal wall surfaces, including furnishings.

Winkworth