

CHEPSTOW ROAD, W2
£695 PER WEEK (£3,011.66 PCM) FURNISHED

AN IMMACULATE ONE BED ON THE RAISED GROUND FLOOR OF THIS PRETTY PERIOD BUILDING.

Notting Hill Lettings | 0207 727 3227 | nottinghill@winkworth.co.uk

Winkworth

for every step...

winkworth.co.uk



DESCRIPTION:

An immaculate one bed on the raised ground floor of an attractive period building which is fully furnished to a high standard, has high ceilings. The flat has a semi open plan fully fitted kitchen and reception which is cleverly divided to make fantastic use of the space. The bedroom has plenty of storage and is located towards the back of the property with ensuite bathroom. Available fully furnished 6 months inclusive of all bills. Shorter lets to be separately negotiated.

Utilities:

Electricity – Mains

Water – Mains

Sewerage – Mains

Heating – Gas

Broadband <https://checker.ofcom.org.uk/en-gb/broadband-coverage>

Mobile Coverage <https://checker.ofcom.org.uk/en-gb/mobile-coverage>

LOCATION:

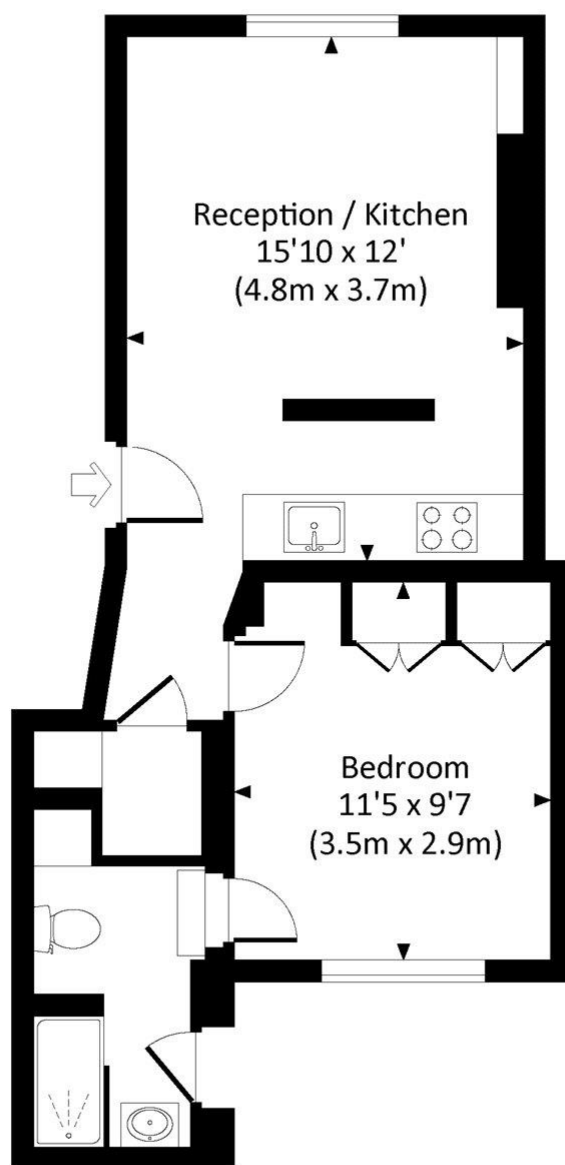
Chepstow Road is an attractive, tree lined, residential street running north from Westbourne Grove, a short walk to all the amenities of Westbourne Grove and Ledbury Road and within easy walking distance of the transport facilities at Notting Hill Gate.



CHEPSTOW ROAD, W2

Approx. gross internal area

393 Sq Ft. / 36.5 Sq M.

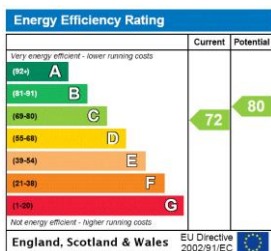


GROUND FLOOR



All measurements have been made in accordance with RICS Code of Measuring Practice which are approximate only and only for illustrative purposes. For the avoidance of doubt, Dowling Jones Design shall not be liable for any reliance on these measurements. © 2017 www.dowlingjones.com 020 7610 9933

This floorplan is for illustration purposes only and is not to scale. The position and size of doors, windows, appliances and other features are approximate.



Deposit: £3,475

Holding Deposit: £695

Council Tax Band: C (Westminster)

Where no figures are shown, we have been unable to ascertain the information. All figures that are shown were correct at the time of printing.

Notting Hill Lettings | 0207 727 3227 | nottinghill@winkworth.co.uk

Winkworth

for every step...

winkworth.co.uk

Winkworth wishes to inform prospective buyers and tenants that these particulars are a guide and act as information only. All our details are given in good faith and believed to be correct at the time of printing but they don't form part of an offer or contract. No Winkworth employee has authority to make or give any representation or warranty in relation to this property. All fixtures and fittings, whether fitted or not are deemed removable by the vendor unless stated otherwise and room sizes are measured between internal wall surfaces, including furnishings.