



Glenwood Road  
West Moors, Ferndown BH22 0EW  
**GUIDE PRICE £650,000**

**Winkworth**





**GUIDE PRICE £ 650,000**  
**FREEHOLD**

**This deceptively spacious four bedroom, three bathroom detached home is positioned on a secluded plot approaching a fifth of an acre in a particularly desirable residential area, walking distance of West Moors Village and a stones throw from West Moors Plantation with excellent horse riding and many cycle paths.**

**Further benefits include a large garage, off road parking for multiple vehicles and NO ONWARD CHAIN.**

Detached  
Four Bedrooms  
Two Reception Rooms  
Kitchen Breakfast Room  
Conservatory  
Utility Room & Downstairs WC  
Large Garage  
Gated Driveway  
Close To Amenities  
En-Suite Bedroom  
Secluded Garden  
Potential To Extend STPP

EPC TBC Council Tax Band E

01202 434365  
ferndown@winkworth.co.uk







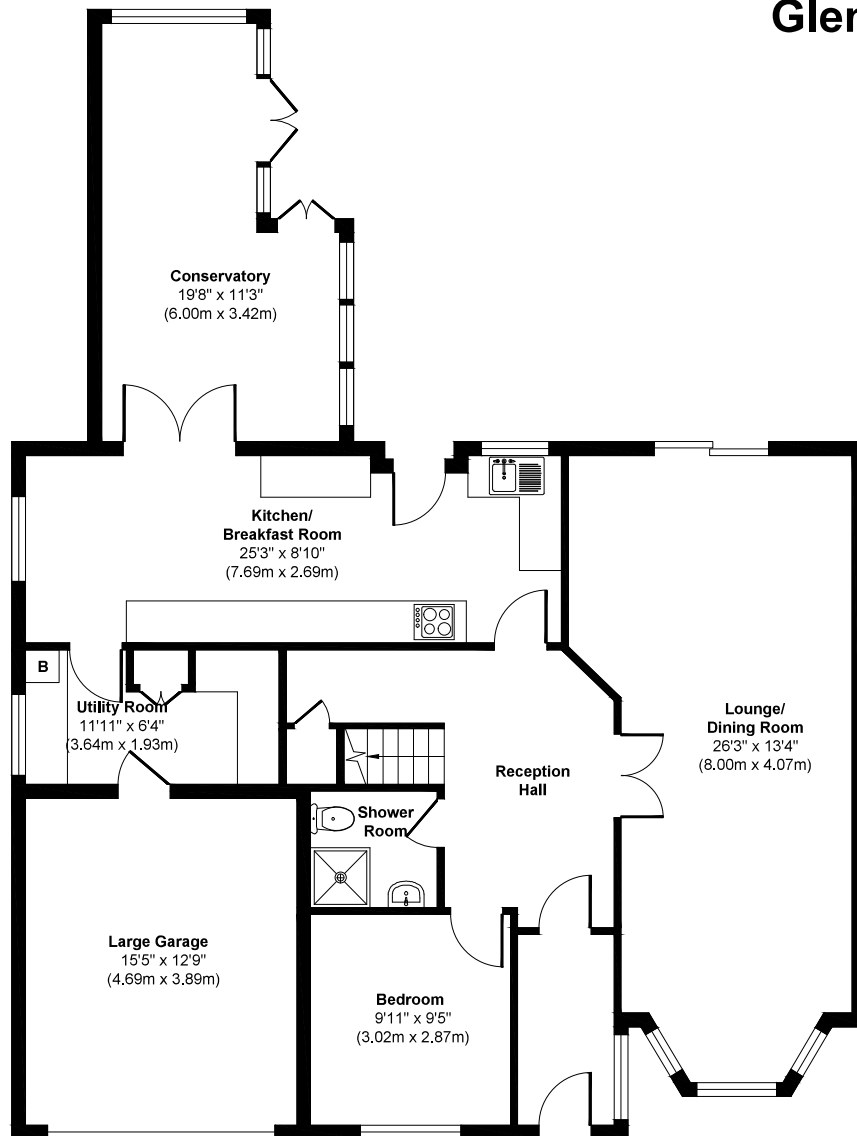




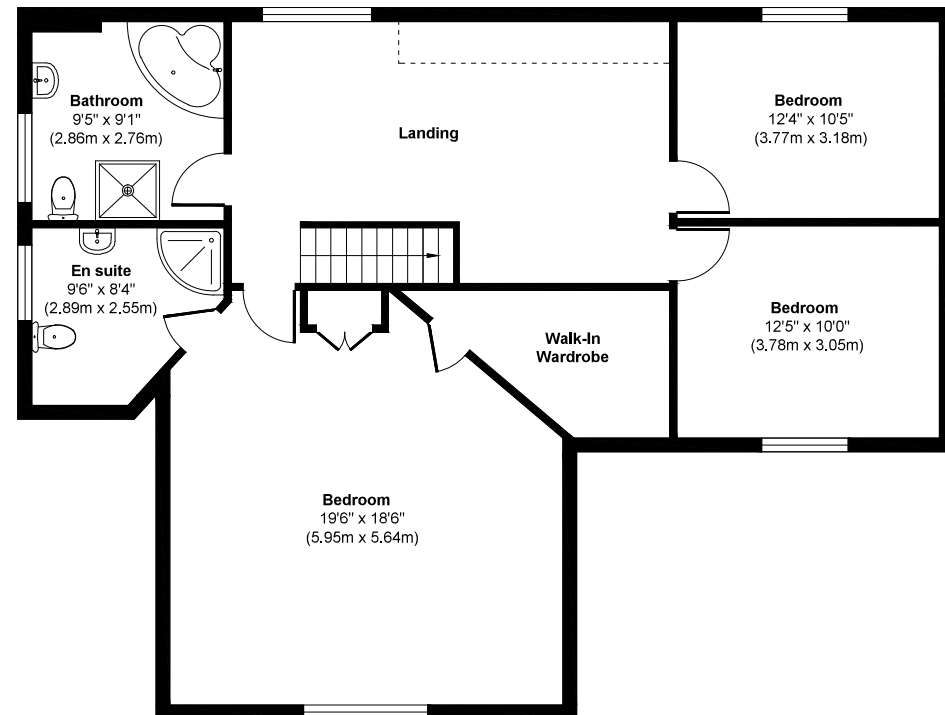




# Glenwood Road



**Ground Floor**  
Approximate Floor Area  
1378 sq. ft  
(128.03 sq. m)



**First Floor**  
Approximate Floor Area  
1059 sq. ft  
(98.36 sq. m)

**Approx. Gross Internal Floor Area 2437 sq. ft / 226.39 sq. m**  
Illustration for identification purposes only, measurements are approximate and not to scale





#### LOCATION

A short walk from of a range of amenities and leisure facilities in the popular village of West Moors, within catchment for excellent schools and close to bus routes which give you easy access to Bournemouth, Poole & Wimborne all of which have an excellent range of shops, bars and restaurants. The property is also conveniently located within walking distance of West Moors plantation with its lovely walks and cycle paths, as well as the Castleman Trailway. The A31 provides quick access to the New Forest, Southampton, London and beyond for the commuter by car and award winning beaches are just twenty minutes away.

Winkworth Ferndown

406 Ringwood Road, Ferndown, Dorset, BH22 9AU

01202 434365 | [ferndown@winkworth.co.uk](mailto:ferndown@winkworth.co.uk)

[winkworth.co.uk/ferndown](http://winkworth.co.uk/ferndown)

**Winkworth**