



TIERNEY ROAD, SW2  
**£295,000 LEASEHOLD**

**Winkworth**





## TIERNEY ROAD, SW2

**This charming and spacious (515 sq. Ft.) first floor, one double bedroom apartment is located on a pretty tree-lined residential street close to Streatham Hill and Brixton Hill.**

Available exclusively through Winkworth, we are delighted to present this Victorian conversion apartment offering over 500 sq. Ft. of space and flooded with natural light.

Located on a sought-after residential street and set within a handsome Victorian semi-detached house, this smart apartment comprises: a double bedroom with pale grey walls and wooden flooring, a modern white bathroom, a bright reception room with a large sash window bay and a modern white fitted kitchen with built-in appliances.

Tierney Road is a quiet sought-after residential road just off the South Circular Road comprising mainly of large mid-Victorian houses and converted apartments; the property is within easy reach of Balham, Clapham and Brixton. Locally they are many excellent amenities including the restaurants and cafes of "Abbeville Village" near Clapham Common. The nearest transport is at Streatham Hill station (overland to Victoria in 17mins) and Clapham South (Northern Line) and Brixton (Victoria Line) tube stations are a short bus ride away.

This charming property is available with a long lease and early viewings are recommended.



## LOCATION

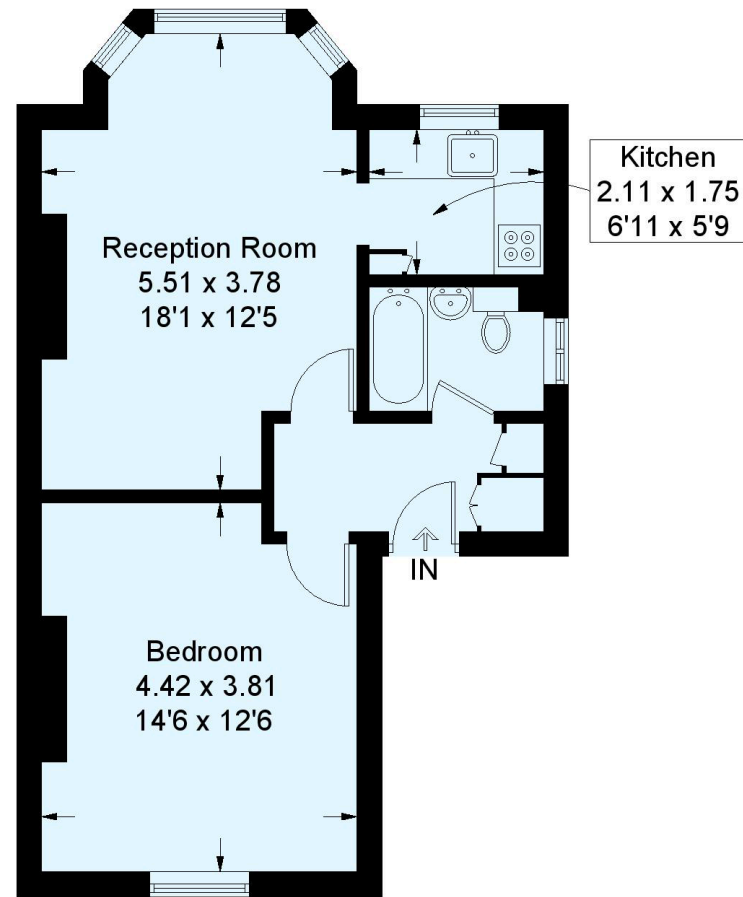
Streatham Hill





## Tierney Road, SW2

Approximate Gross Internal Area  
47.9 sq m / 515 sq ft



### First Floor

This plan is for layout guidance only. Not drawn to scale unless stated. Windows and door openings are approximate. Whilst every care is taken in the preparation of this plan, please check all dimensions, shapes and compass bearings before making any decisions reliant upon them. (ID333766)

Streatham | 020 8769 6699 | [streatham@winkworth.co.uk](mailto:streatham@winkworth.co.uk)

[winkworth.co.uk](https://www.winkworth.co.uk)

Winkworth wishes to inform prospective buyers and tenants that these particulars are a guide and act as information only. All our details are given in good faith and believed to be correct at the time of printing but they don't form part of an offer or contract. No Winkworth employee has authority to make or give any representation or warranty in relation to this property. All fixtures and fittings, whether fitted or not are deemed removable by the vendor unless stated otherwise and room sizes are measured between internal wall surfaces, including furnishings.

**Winkworth**