



DEAN ROAD, WILLESDEN GREEN, LONDON, NW2  
**£2,100 PER MONTH**

**A VERY WELL PRESENTED AND MAINTAINED TWO  
 BEDROOM FIRST FLOOR FLAT ON DEAN ROAD WITH  
 AN OUTSIDE GARDEN SPACE.**

Kensal Rise & Queens Park | 0208 960 4947 | [kensalrise@winkworth.co.uk](mailto:kensalrise@winkworth.co.uk)

**Winkworth**

for every step...

[winkworth.co.uk](http://winkworth.co.uk)





## DESCRIPTION:

A very well presented and maintained two bedroom first floor flat on Dean Road.

The property is offered to the market with an outside garden space which is rare with first floor properties.

Comprises of a spacious reception room large windows offering an abundance of natural light, a large primary bedroom with built in wardrobes and a desk built into the alcove. There is a second bedroom with large wardrobe perfect for an office or child's bedroom and the eat-in kitchen is fully fitted and has a breakfast bar.

Additional features include a well maintained communal hallway, hard wooden flooring throughout and a modern fully tiled bathroom.

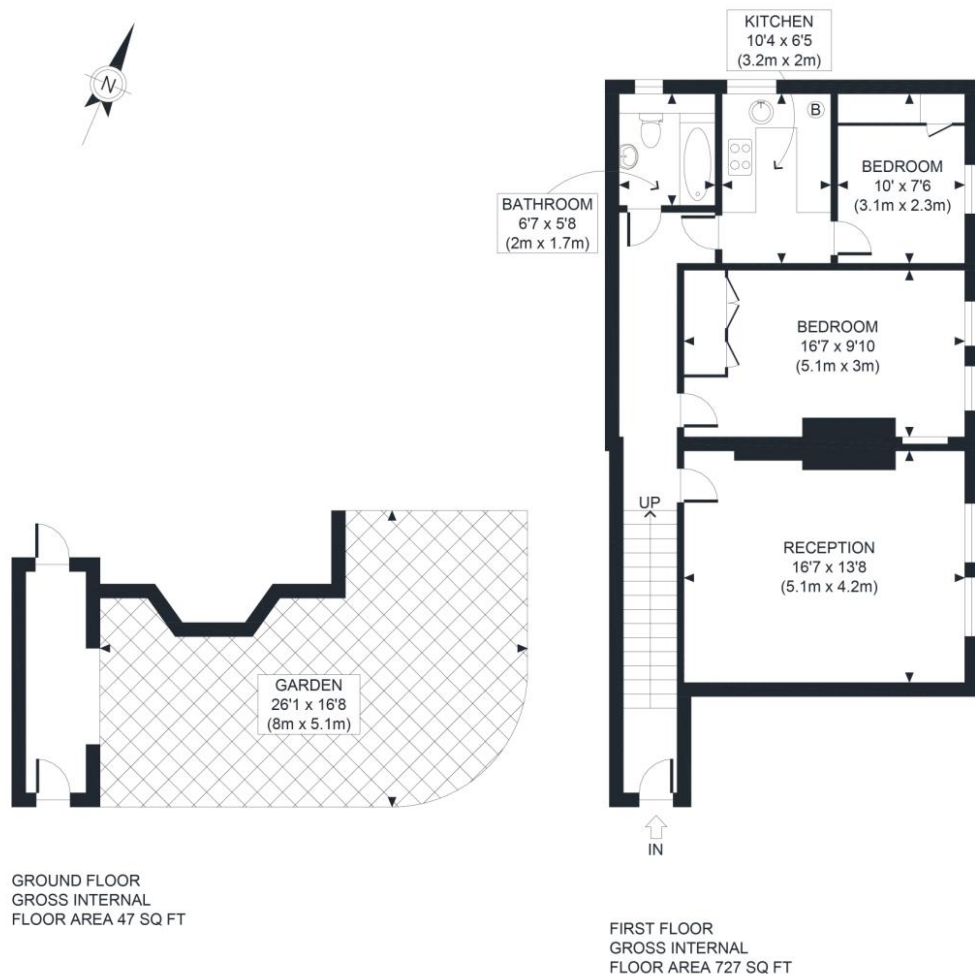
Offered part furnished – please see advert for more details

Dean Road is in a fantastic location less than a quarter mile from Willesden Green tube station on the Jubilee line, Zone 2. Highly Recommended.









APPROX. GROSS INTERNAL FLOOR AREA 774 SQ FT / 72 SQM

Ref: WWWG

Copyright **photo**plan

Disclaimer: Floor plan measurements are approximate and are for illustrative purposes only. While we do not doubt the floor plan accuracy and completeness, you or your advisors should conduct a careful, independent investigation of the property in respect of monetary valuation

This floorplan is for illustration purposes only and is not to scale. The position and size of doors, windows, appliances and other features are approximate.

Score	Energy rating	Current	Potential
92+	A		
81-91	B		
69-80	C	75 C	81 B
55-68	D		
39-54	E		
21-38	F		
1-20	G		

**Deposit:** 5 weeks rent

**Holding Deposit:** 1 weeks rent

**Council Tax Band:** C

Where no figures are shown, we have been unable to ascertain the information. All figures that are shown were correct at the time of printing.

Kensal Rise & Queens Park | 0208 960 4947 | kensalrise@winkworth.co.uk

**Winkworth**

for every step...

[winkworth.co.uk](http://winkworth.co.uk)

Winkworth wishes to inform prospective buyers and tenants that these particulars are a guide and act as information only. All our details are given in good faith and believed to be correct at the time of printing but they don't form part of an offer or contract. No Winkworth employee has authority to make or give any representation or warranty in relation to this property. All fixtures and fittings, whether fitted or not are deemed removable by the vendor unless stated otherwise and room sizes are measured between internal wall surfaces, including furnishings.