



THE GRANGE, LONDON, W4
£525,000 LEASEHOLD

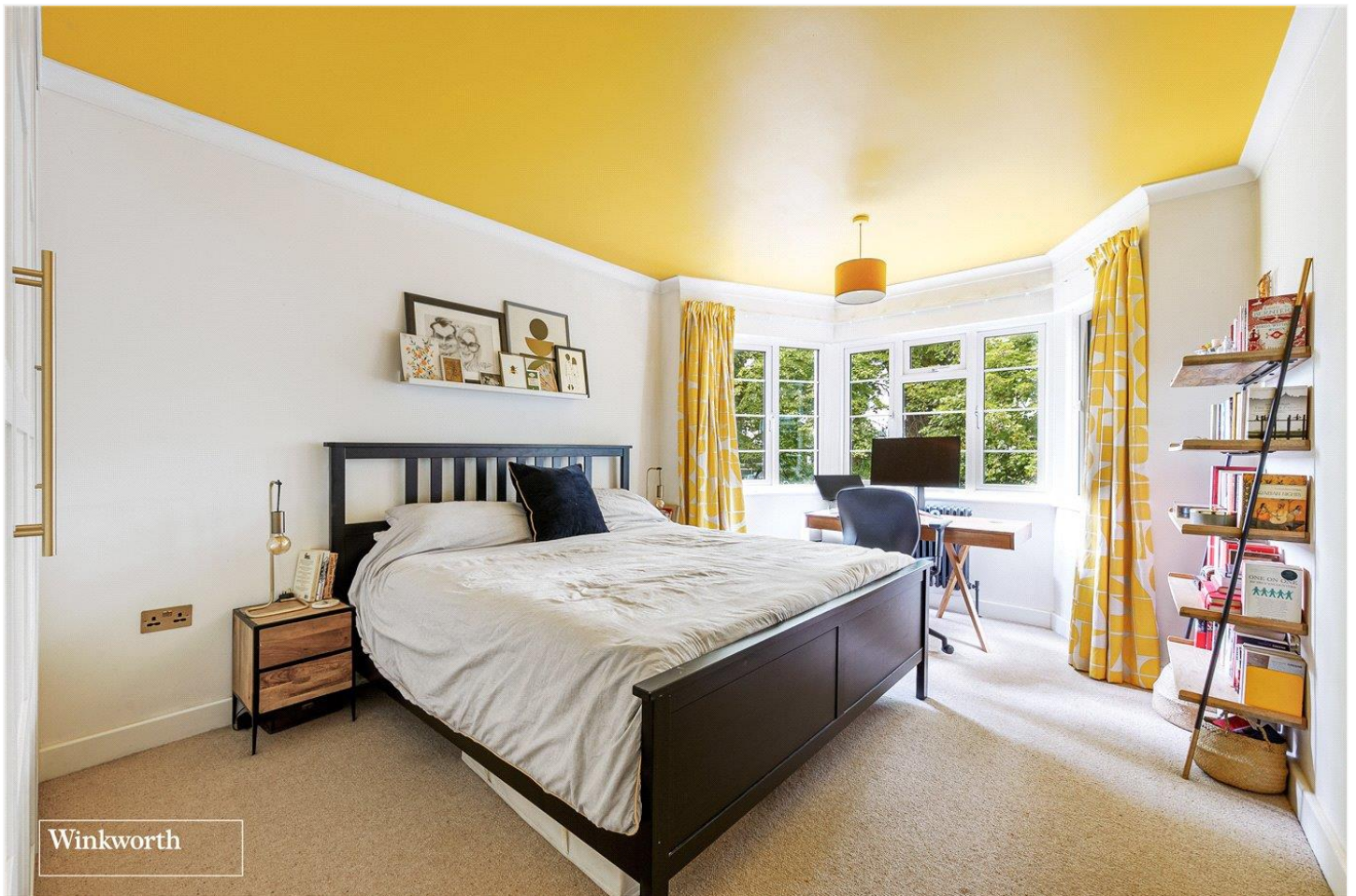
TWO DOUBLE BEDROOM PURPOSE BUILT APARTMENT

Chiswick | 020 8994 7096 | chiswick@winkworth.co.uk

Winkworth

for every step...

[winkworth.co.uk](https://www.winkworth.co.uk)



DESCRIPTION:

A very well-presented purpose-built apartment which has been completely renovated by the current Vendors to offer a comfortable and stylish home whilst retaining much of the original style 1930's Art Deco influence. The first-floor apartment comprises a well-proportioned lounge with a front aspect bay window, a modern fitted kitchen with integral appliances and direct access to a shared balcony/fire escape, the main bedroom is a great size and boasts floor to ceiling built-in wardrobes and the second bedroom is a good double. The bathroom has been re-configured and finished to an exacting standard with his and her basins and a bespoke walk-in shower. Ideally positioned on a pretty, tree lined road, moments from Chiswick High Road with its eclectic choice of eateries and shops. Gunnersbury Train Station and underground (Zone 3) District Line and Northern Line Overground from Richmond to Stratford is minutes away for the smart commuter. Please contact Winkworth, Chiswick for the details of the lease, service charge and ground rent.

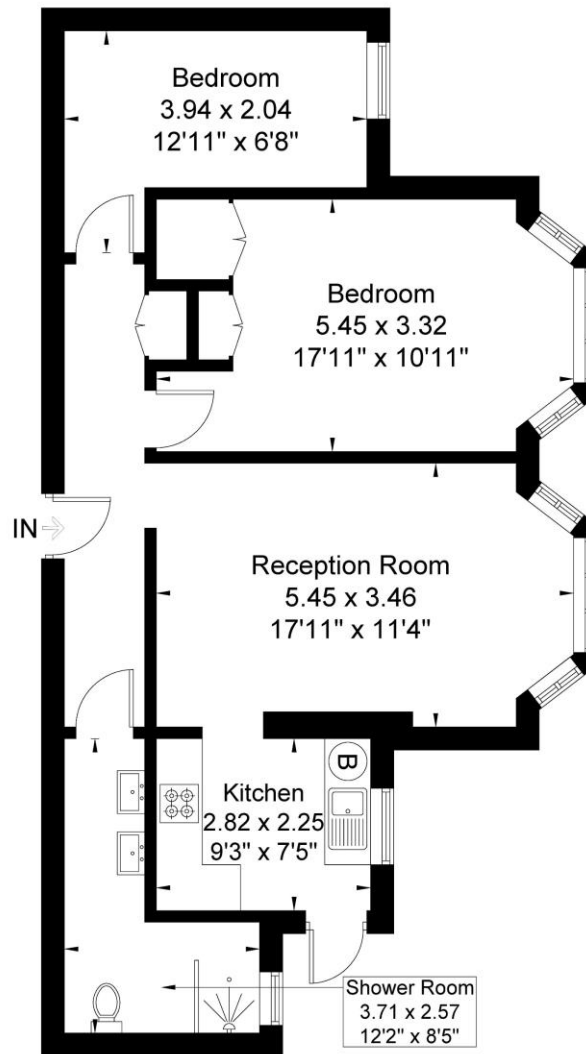
ACCOMMODATION

Leasehold 99 years 11 months, 2 Bedrooms, 1 Reception Rooms, 1 Bathrooms, Flat/Apartment, First Floor, Communal Gardens, Period, Town/City, Purpose Built, Very Good decoration.



The Grange

Approximate Gross Internal Area = 66.3 sq m / 713 sq ft

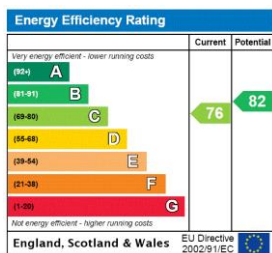


First Floor

Winkworth

Although every attempt has been made to ensure accuracy, all measurements are approximate.
The floorplan is for illustrative purposes only and not to scale.
© www.prerspective.co.uk

This floorplan is for illustration purposes only and is not to scale. The position and size of doors, windows, appliances and other features are approximate.



Chiswick | 020 8994 7096 | chiswick@winkworth.co.uk

Winkworth

for every step...

winkworth.co.uk

Winkworth wishes to inform prospective buyers and tenants that these particulars are a guide and act as information only. All our details are given in good faith and believed to be correct at the time of printing but they don't form part of an offer or contract. No Winkworth employee has authority to make or give any representation or warranty in relation to this property. All fixtures and fittings, whether fitted or not are deemed removable by the vendor unless stated otherwise and room sizes are measured between internal wall surfaces, including furnishings.