



GLOUCESTER COURT, KEW ROAD, KEW, SURREY, TW9
£1,500 PER MONTH PART FURNISHED

Brentford | 020 8560 1125 | brentford@winkworth.co.uk

Tenant Fees Apply: Details of fees for tenant referencing, tenancy agreement admin fees and renewal fees are available on the Winkworth website and the link can be found with the displayed rent for the property. Tenants should ensure they are fully conversant with these upfront fees and other costs that are involved at the outset of the tenancy before making an offer to rent and your local Winkworth office will provide written details upon request.

winkworth.co.uk

Winkworth

for every step...



DESCRIPTION:

A newly renovated two-bedroom first floor flat set within this conveniently located development just off Kew Green. Accommodation comprising of entrance hallway, reception, new kitchen, new bathroom, two double bedrooms with wardrobes.

Winkworth

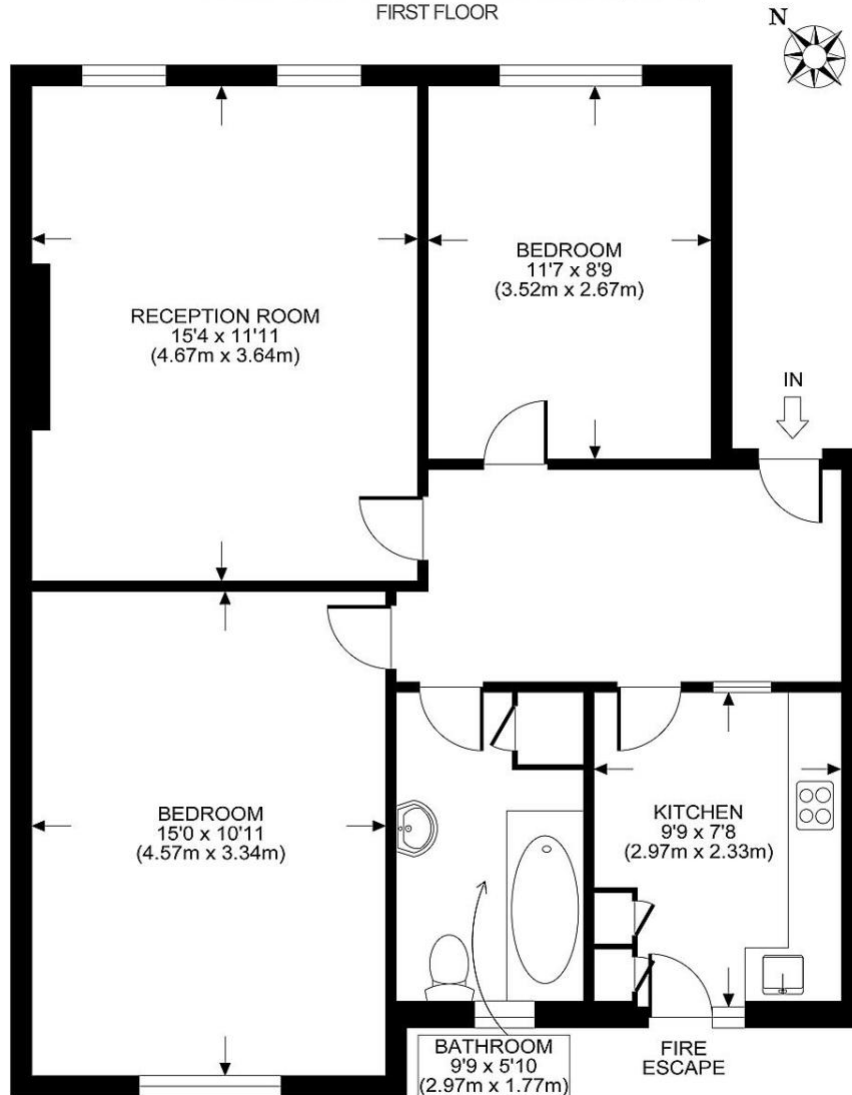
for every step...



Winkworth

for every step...

GLoucester COURT, KEW ROAD, TW9
TOTAL APPROX. FLOOR PLAN AREA 690 SQ.FT. (64 SQ.M.)
FIRST FLOOR



All measurements walls, doors, windows, fittings and their appliances, their size and locations are shown conventionally and are approximate only and cannot be regarded as being a representation either by the seller or his agent nor zentuvo
www.zentuvo.co.uk

This floorplan is for illustration purposes only and is not to scale. The position and size of doors, windows, appliances and other features are approximate.

Energy Efficiency Rating		Current	Potential
Very energy efficient - lower running costs			
(92-100) A			
(81-91) B			
(69-80) C			
(55-68) D			
(39-54) E			
(21-38) F			
(1-20) G			
Not energy efficient - higher running costs			
England, Scotland & Wales		71	78
EU Directive 2002/91/EC			

Environmental Impact (CO ₂) Rating		Current	Potential
Very environmentally friendly - lower CO ₂ emissions			
(92-100) A			
(81-91) B			
(69-80) C			
(55-68) D			
(39-54) E			
(21-38) F			
(1-20) G			
Not environmentally friendly - higher CO ₂ emissions			
England, Scotland & Wales		75	84
EU Directive 2002/91/EC			