



NAYLOR BUILDING EAST, ADLER STREET, LONDON, E1  
**£700,000 LEASEHOLD**

## TOP FLOOR TWO BEDROOM TWO BATHROOM APARTMENT WITH CITY VIEWS

Shoreditch | 020 7749 7650 | [shoreditch@winkworth.co.uk](mailto:shoreditch@winkworth.co.uk)

**Winkworth**



## DESCRIPTION:

A well-presented two double bedroom, two-bathroom City apartment located on the 6th floor which forms part of the desirable Aldgate Triangle development. The development boasts 24hr concierge, residents' gym, roof terrace, fob entry, lift access and secure underground parking, with a parking space allocated to this apartment.

The property comprises entrance hall with storage space, family bathroom with three piece suite, fantastic double height ceilings in the living room/diner with access to a north facing balcony overlooking the park and offering cityscape views, solid wooden floors and plenty of natural light, the kitchen is semi open plan with built in appliances including fridge, freezer, dishwasher, electric oven and hob, two good sized double bedrooms with an en-suite shower room to the master. All rooms feature windows overlooking the park and city skyline.

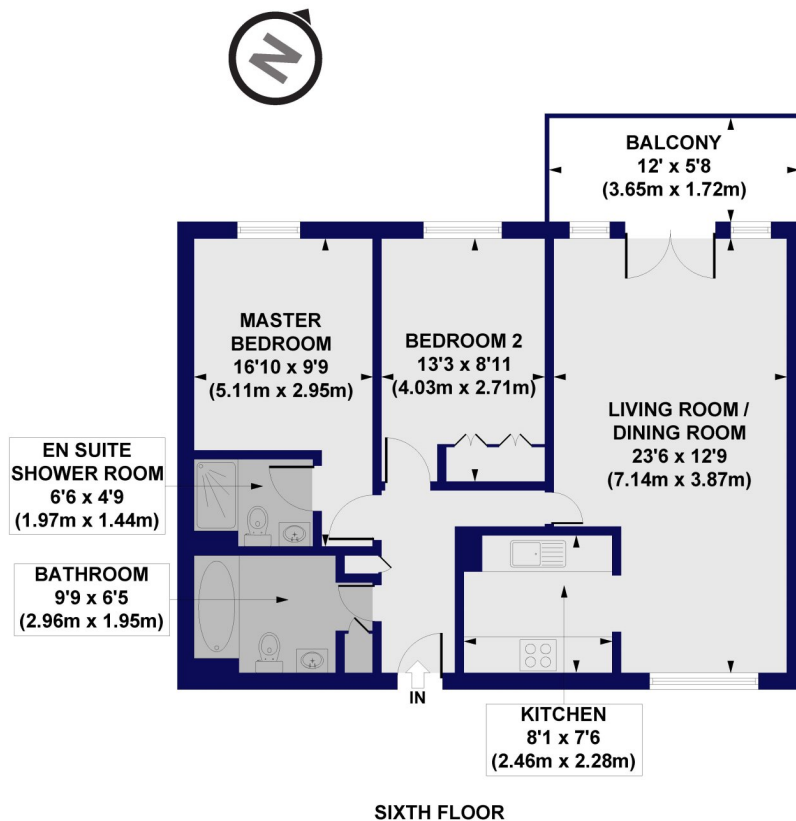
Situated on Adler Street the flat offers numerous transport options with Aldgate, Aldgate East and Whitechapel (Elizabeth Line) and Liverpool Street underground stations are all within easy walking distance giving fantastic access across the City. There is also a wealth of local amenities on your doorstep with Brick Lane and Spitalfields markets offering an array of boutique shops, cafes, bars, and restaurants.

**Winkworth**



**Winkworth**

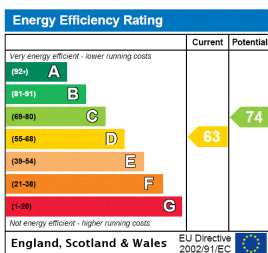
Naylor Building East, Adler Street, E1  
 Approx. Gross Internal Floor Area 764 sq. ft / 70.95 sq. m



All measurements of walls, doors, windows, fittings and appliances, including their size and location, are shown as standard sizes and do not constitute any warranty or representation by the seller, their agent or CP Creative. Any intending purchaser must satisfy himself by inspection or otherwise as to the correctness of the information contained in these plans. This plan is for illustrative purposes only and should be used as such by any prospective purchasers.

**Winkworth**

This floorplan is for illustration purposes only and is not to scale. The position and size of doors, windows, appliances and other features are approximate.



Shoreditch | 020 7749 7650 | shoreditch@winkworth.co.uk

**Winkworth**

winkworth.co.uk

See things differently

Winkworth wishes to inform prospective buyers and tenants that these particulars are a guide and act as information only. All our details are given in good faith and believed to be correct at the time of printing but they don't form part of an offer or contract. No Winkworth employee has authority to make or give any representation or warranty in relation to this property. All fixtures and fittings, whether fitted or not are deemed removable by the vendor unless stated otherwise and room sizes are measured between internal wall surfaces, including furnishings.